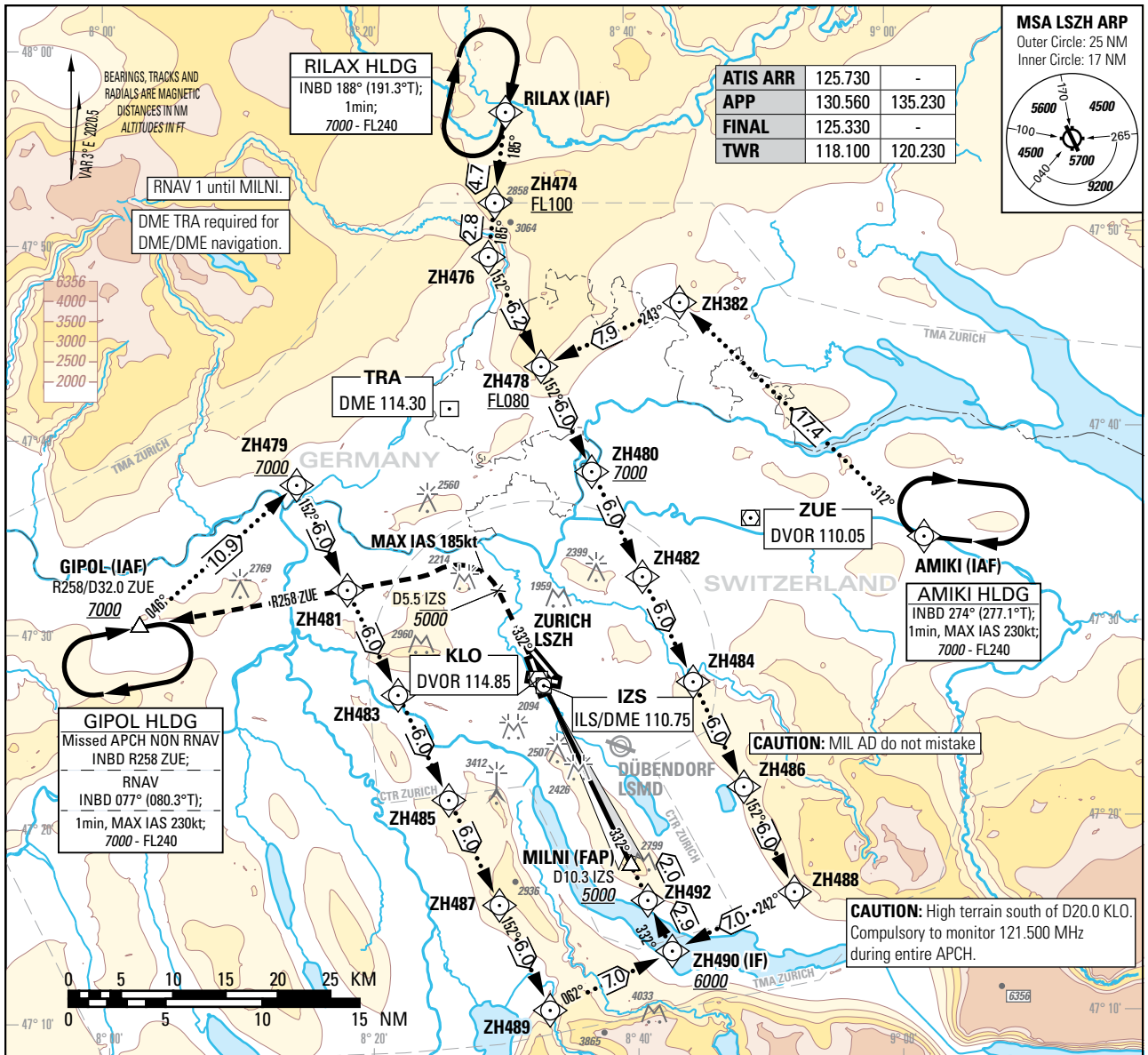


Instrument Approach Chart (IAC) - ICAO

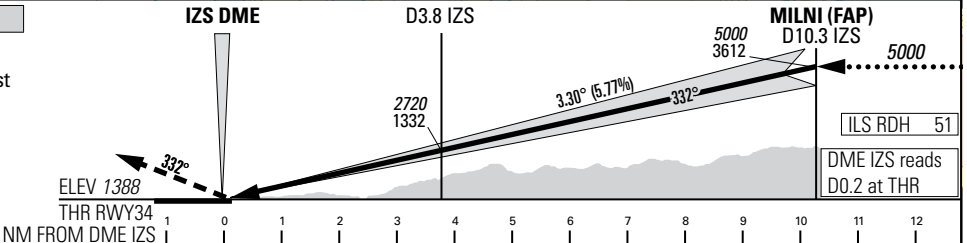
AD ELEV 1417ft

TRANSITION LEVEL by ATC
TRANSITION ALTITUDE 7000

ZURICH LSZH
ILS RWY 34



MISSED APPROACH
Initial climb clearance 5000.
Climb straight ahead. At D5.5 IZS past the station turn left (MAX IAS 185kt during turn) and intercept R258 ZUE. Continue climb to 7000. Proceed to GIPOL.
Cross D5.5 IZS at or below 5000.
Cross GIPOL at or above 7000.



Missed APCH climb gradient requirement	STRAIGHT-IN APPROACH				
	A	B	C	D	D _L
2.5%	OBSTACLE CLEARANCE ALTITUDE (HEIGHT)				
	pressure altimeter	1592 (204)	1602 (214)	1615 (227)	1625 (237)
2.8% to 2200	OBSTACLE CLEARANCE ALTITUDE (HEIGHT)				
	pressure altimeter	1543 (155)	1552 (164)	1560 (172)	1571 (183)
2.8% to 2200	DECISION ALTITUDE (HEIGHT)				
	pressure altimeter	1588 (200)			

ROD	GS kt	90	110	130	150
		FT/MIN	526	642	759

NOTE
Level assignments will be issued by ATC.

IZS DME	2	3	4	5	6	7	8	9	10
RECOMMENDED CROSSING ALTITUDE (HEIGHT)	2090 (700)	2440 (1050)	2790 (1400)	3140 (1750)	3490 (2100)	3840 (2450)	4190 (2800)	4540 (3150)	4890 (3500)

COR: note added (WEF 20FEB2025)

THIS PAGE INTENTIONALLY LEFT BLANK