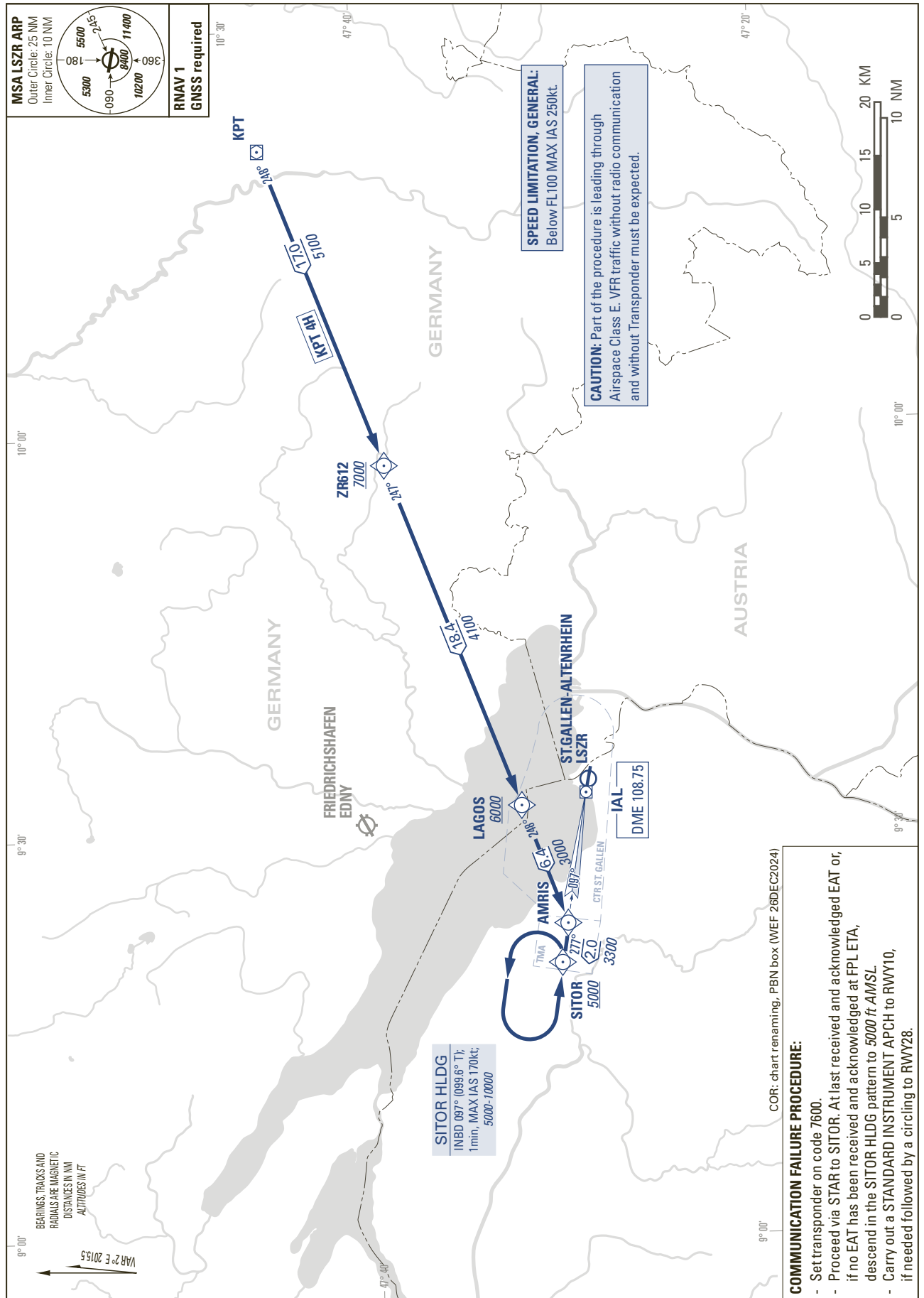


STANDARD ARRIVAL CHART - INSTRUMENT (STAR) - ICAO

TRANSITION LEVEL by ATC  
TRANSITION ALTITUDE 5000

ST. GALLEN-ALTENRHEIN (LSZR)  
RNAV SITOR (1/2)

KPT 4H



THIS PAGE INTENTIONALLY LEFT BLANK