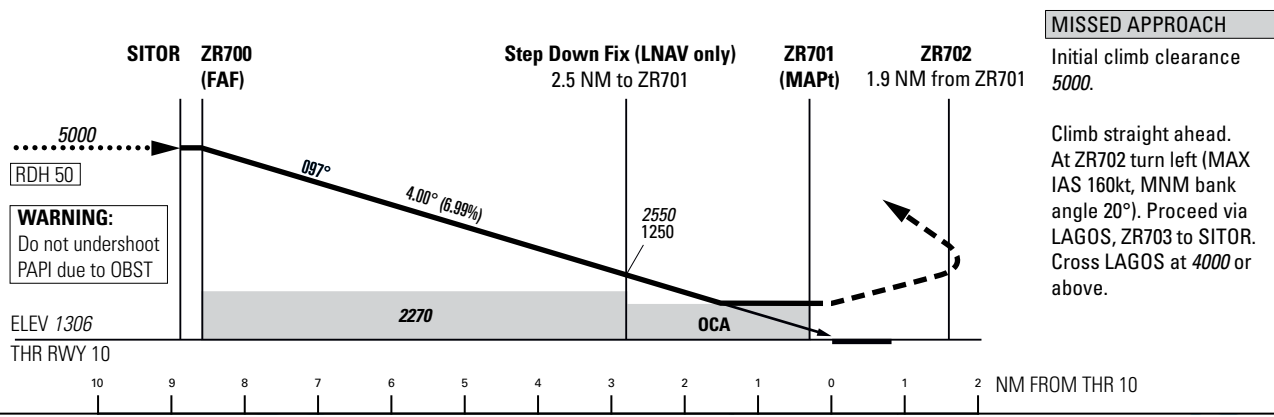
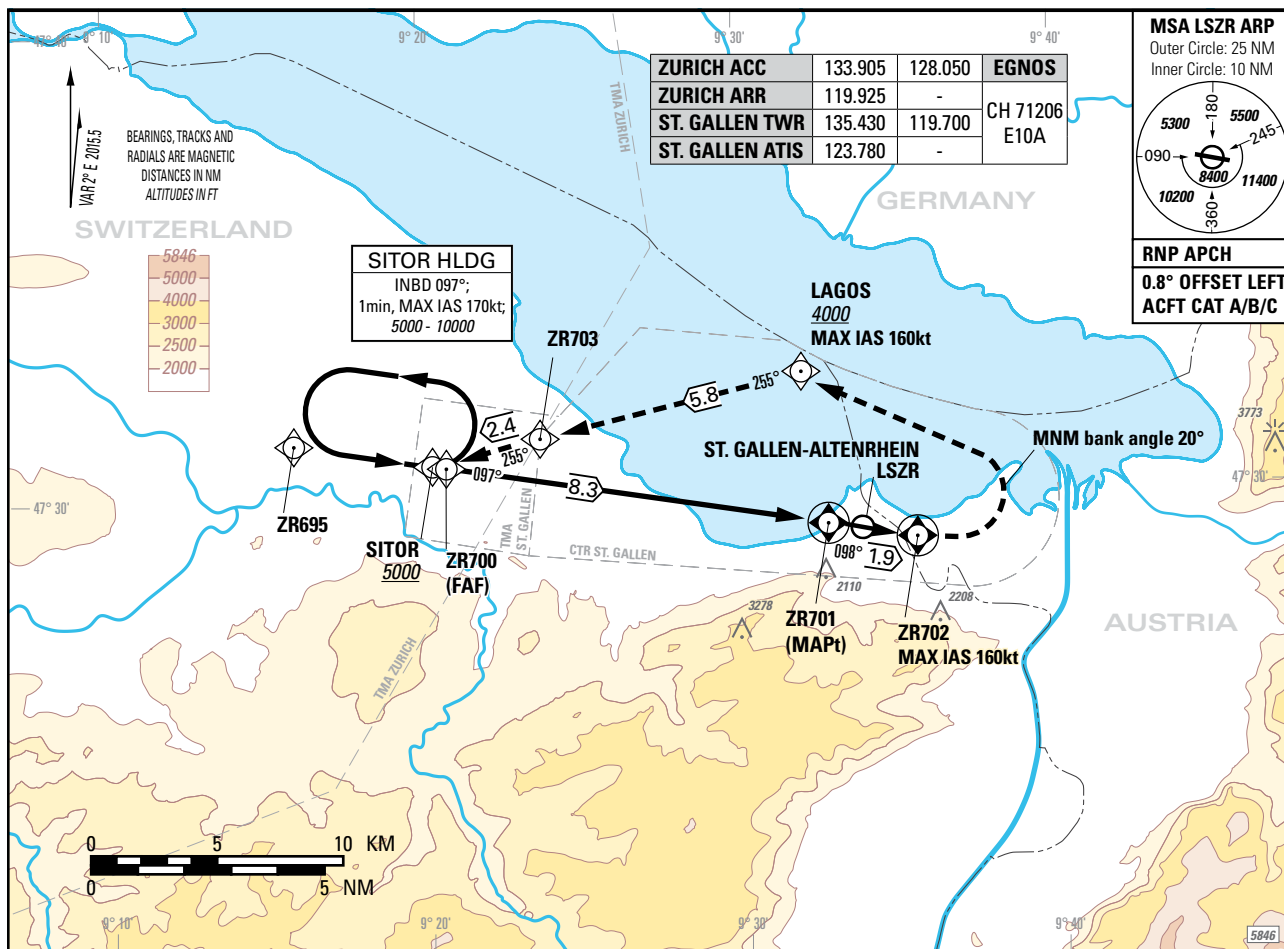


Instrument Approach Chart  
(IAC) - ICAO

AD ELEV 1306ft

TRANSITION LEVEL by ATC  
TRANSITION ALTITUDE 5000

ST. GALLEN-ALTENRHEIN (LSZR)  
RNP RWY 10



Missed APCH climb gradient requirement	STRAIGHT-IN APPROACH		
	A	B	C
	OCA(H) LPV		
2.5%	1890 (590)	1910 (610)	1920 (620)
4.0%	1750 (450)	1760 (460)	1780 (480)
	DA(H) LPV		
4.0%	1810 (500)		
	OCA(H) LNAV		
2.5%	2180 (880)		
3.3%	2130 (830)		
	A	B	C
CIRCLING <sup>1) 3)</sup>	2170 (870)		2270 (970) <sup>2)</sup>

ROD	GS kt								
	80	100	120	140					
	567	708	849	991					
DIST ZR701	8.3	8	7	6	5	4	3	2	1
DIST THR	8.6	8.3	7.3	6.3	5.3	4.3	3.3	2.3	1.3
ALT FT	5000	4890	4460	4040	3610	3190	2760	2340	1910

**NOTE**

- Circling north of AP only.
- MAX IAS 160kt due to airspace.
- Remain within CTR.

**CAUTION**

- 0.2 NM before THR 10 Visual Segment Surface (VSS) penetrated by trees up to 1380ft AMSL.
- This is not a standard approach angle.
- On 4° APCH angle and GS > 140kt resulting ROD will be > 1000ft/min.

COR: chart renaming (WEG 26DEC2024)

Input Data	
Parameters	Values
Operation Type	0
SBAS Provider	1
Airport Identifier	LSZR
Runway	10
Runway Direction	0
Approach Performance Designator	0
Route Indicator	
Reference Path Data Selector	0
Reference Path Identifier	E10A
LTP/FTP Latitude	472909.3060N
LTP/FTP Longitude	0093305.6730E
LTP/FTP Ellipsoidal Height (metres)	444.4
FPAP Latitude	472900.2150N
Delta FPAP Latitude (seconds)	-9.0910
FPAP Longitude	0093425.5200E
Delta FPAP Longitude (seconds)	79.8470
Threshold Crossing Height	15.0
TCH Units Selector	1
Glidepath Angle (degrees)	4
Course Width (metres)	105
Length Offset (metres)	0
HAL	40
VAL	50

Output Data	
Data Block	10 12 1A 13 0C 0A 00 00 01 30 31 05 74 F5 60 14 12 5E 19 04 5C 25 FA B8 FF CE 6F 02 2C 81 90 01 64 00 C8 FA B9 21 23 29
Calculated CRC Value	B9212329
Supplied CRC Value	B9212329
Comparison Result	OK

FTP Orthometric Height 398.1m