

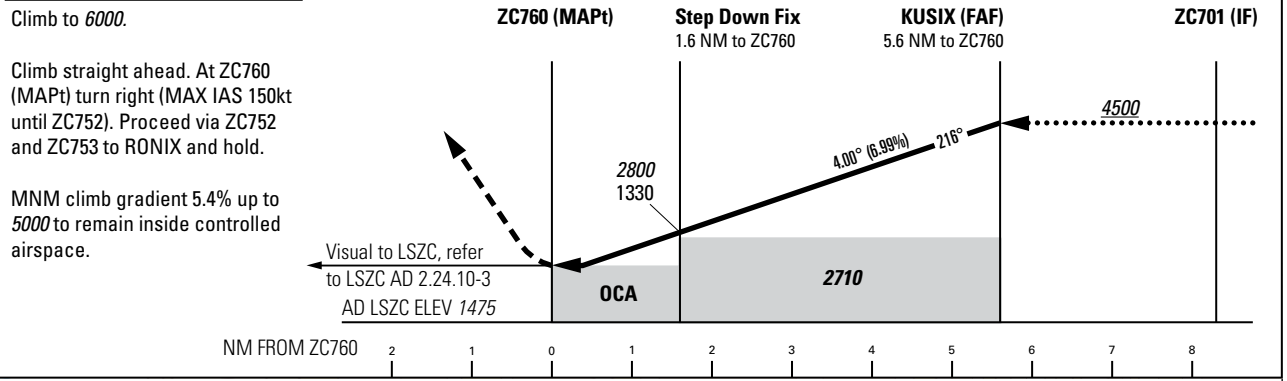
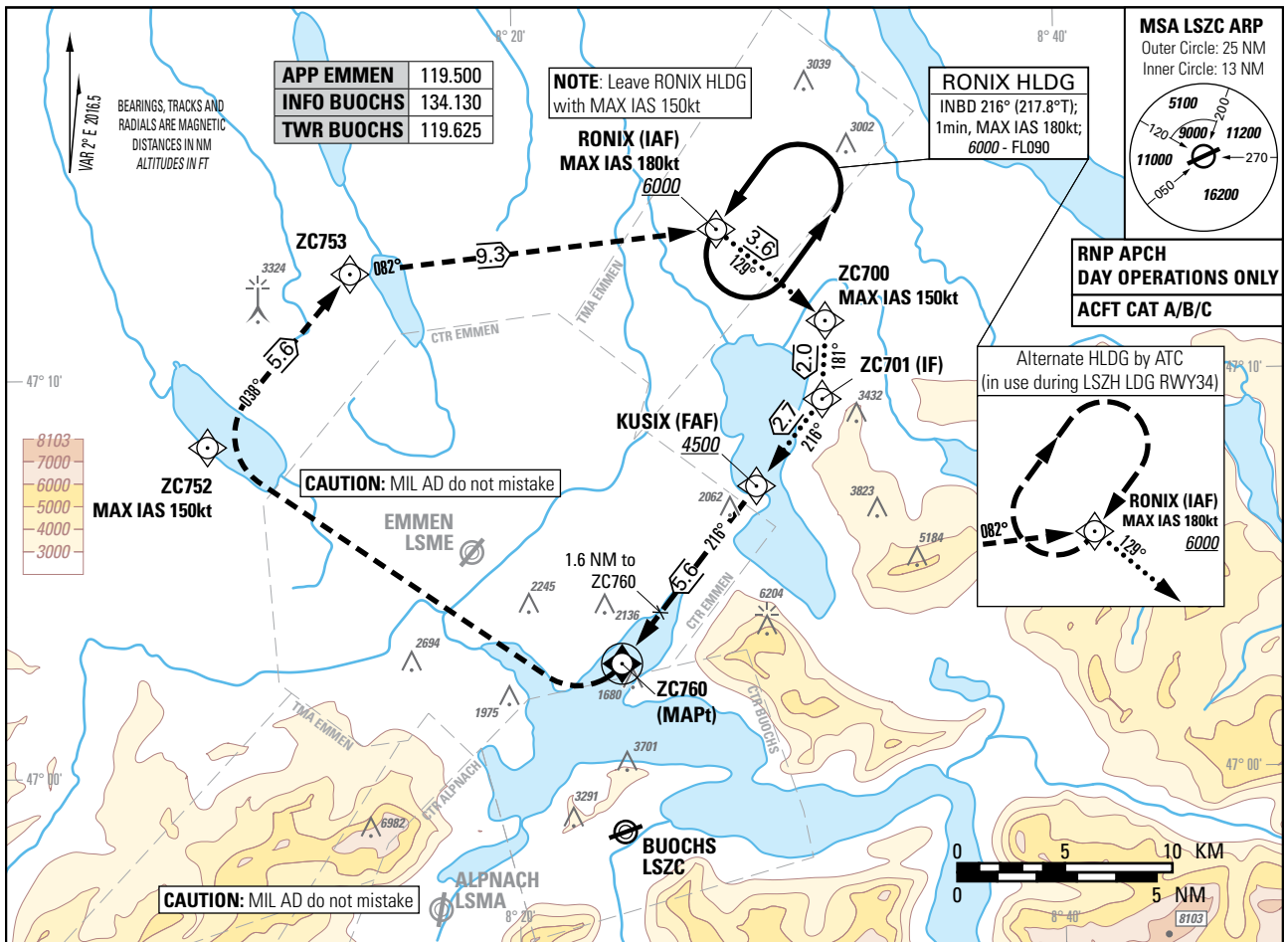
Instrument Approach Chart
(IAC) - ICAO

AD ELEV 1475ft

TRANSITION LEVEL by ATC
TRANSITION ALTITUDE 7000

BUOCHS (LSZC)
RNP-A

PROCEDURE LIMITED TO PILOTS OPERATING FOR PILATUS AIRCRAFT LTD



CAUTION
This is not a standard APCH angle.

REMARK
- VIS APCH following ZC760 according LSZC AD 2.24.10-3.

NOTE
¹⁾ OCH/MDH above AD ELEV.
²⁾ CTR EMMEN 2 not active.
³⁾ CTR EMMEN 2 active.

Dist to ZC760	1	2	3	4	5
	ALT	2550	2970	3400	3820
ROD	GS kt	90	110	130	
	FT/MIN	637	779	921	

COR: chart renaming, PBN box (WEF 26DEC2024)

THIS PAGE INTENTIONALLY LEFT BLANK