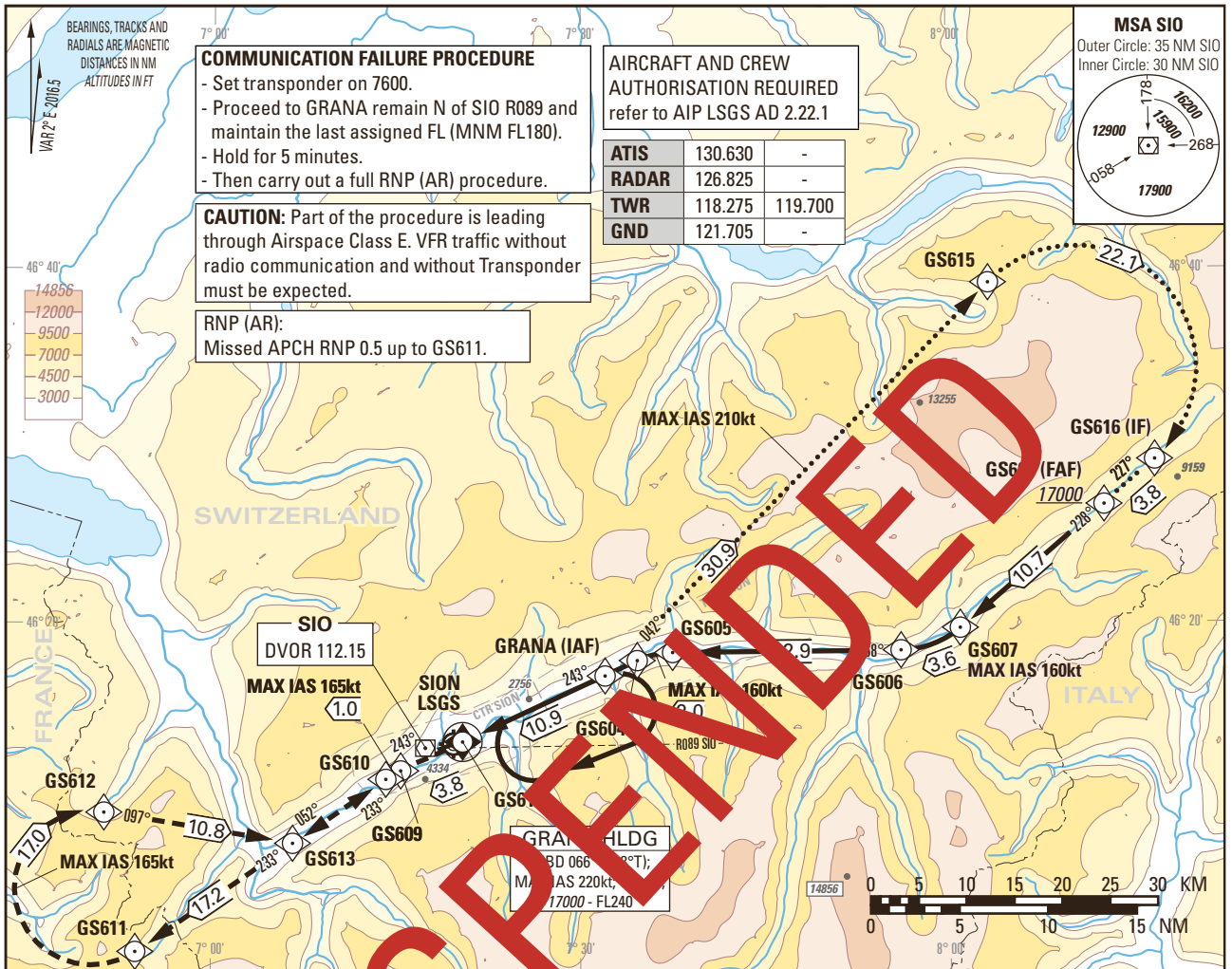


Instrument Approach Chart  
(IAC) - ICAO

AD ELEV 1582ft

TRANSITION LEVEL by ATC  
TRANSITION ALTITUDE 17000

SION LSGS  
RNP RWY 25 (AR)  
OFFSET 8° RIGHT  
ACFT CAT A/B/C



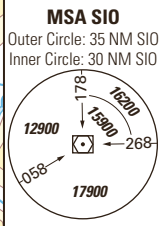
**COMMUNICATION FAILURE PROCEDURE**  
- Set transponder on 7600.  
- Proceed to GRANA remain N of SIO R089 and maintain the last assigned FL (MNM FL180).  
- Hold for 5 minutes.  
- Then carry out a full RNP (AR) procedure.

**CAUTION:** Part of the procedure is leading through Airspace Class E. VFR traffic without radio communication and without Transponder must be expected.

RNP (AR):  
Missed APCH RNP 0.5 up to GS611.

AIRCRAFT AND CREW  
AUTHORISATION REQUIRED  
refer to AIP LSGS AD 2.22.1

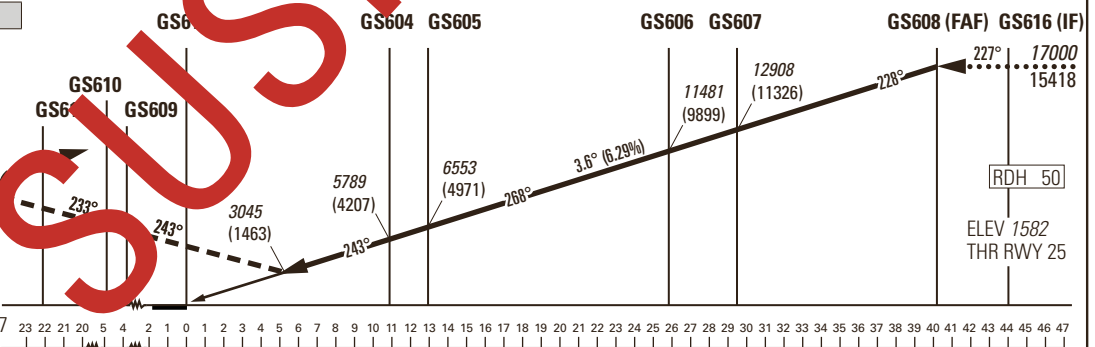
ATIS	130.630	-
RADAR	126.825	-
TWR	118.275	119.700
GND	121.705	-



**MISSED APPROACH**

Climb to 17000.

Proceed via GS617 to GS609 to GS610 to GS611 to GS612 to GS613 to SIO to GRANA.  
All turns MAX IAS 165kt.



Missed APCH climb gradient requirement		STRAIGHT-IN APPROACH		
		OBSTACLE CLEARANCE ALTITUDE (HEIGHT)		
		A	B	C
5.0%	RNP (AR)	3071 (1489)	3084 (1502)	3098 (1516)
		DECISION ALTITUDE (HEIGHT)		
5.0%	RNP (AR)	3071 (1489)	3084 (1502)	3098 (1516)

Missed APCH WPT	GS617	GS609	GS610	GS611	GS612	GS613	SIO	GRANA
recommended CROSSING ALTITUDE (HEIGHT) for Missed APCH climb gradient 5.0%	3699 (2117)	4866 (3284)	5158 (3576)	10375 (8793)	15546 (13964)		17000 (15418)	

ROD	GS kt	80	100	120	140	160
	FT/MIN	510	640	760	890	1020

**REMARK**  
- APCH not authorized when airport temperature below -20°C or above +47°C.  
- RNP (AR) RDH = 50 (PAPI MEHT = 40ft).  
- PAPI 4.0° not coincident with VPA.  
- 0.1 NM BFR THR 25 Visual Segment Surface (VSS) penetrated by trees up to 1670ft AMSL.

**CAUTION**  
- On 3.6° APCH angle and GS > 150kt resulting ROD will be > 1000ft/min.  
- Final APCH track offset by 8° right from RCL intercepting the RCL 480m BFR the THR.

COR: TWR ALTN FREQ added (WEF 23MAR2023)

THIS PAGE INTENTIONALLY LEFT BLANK