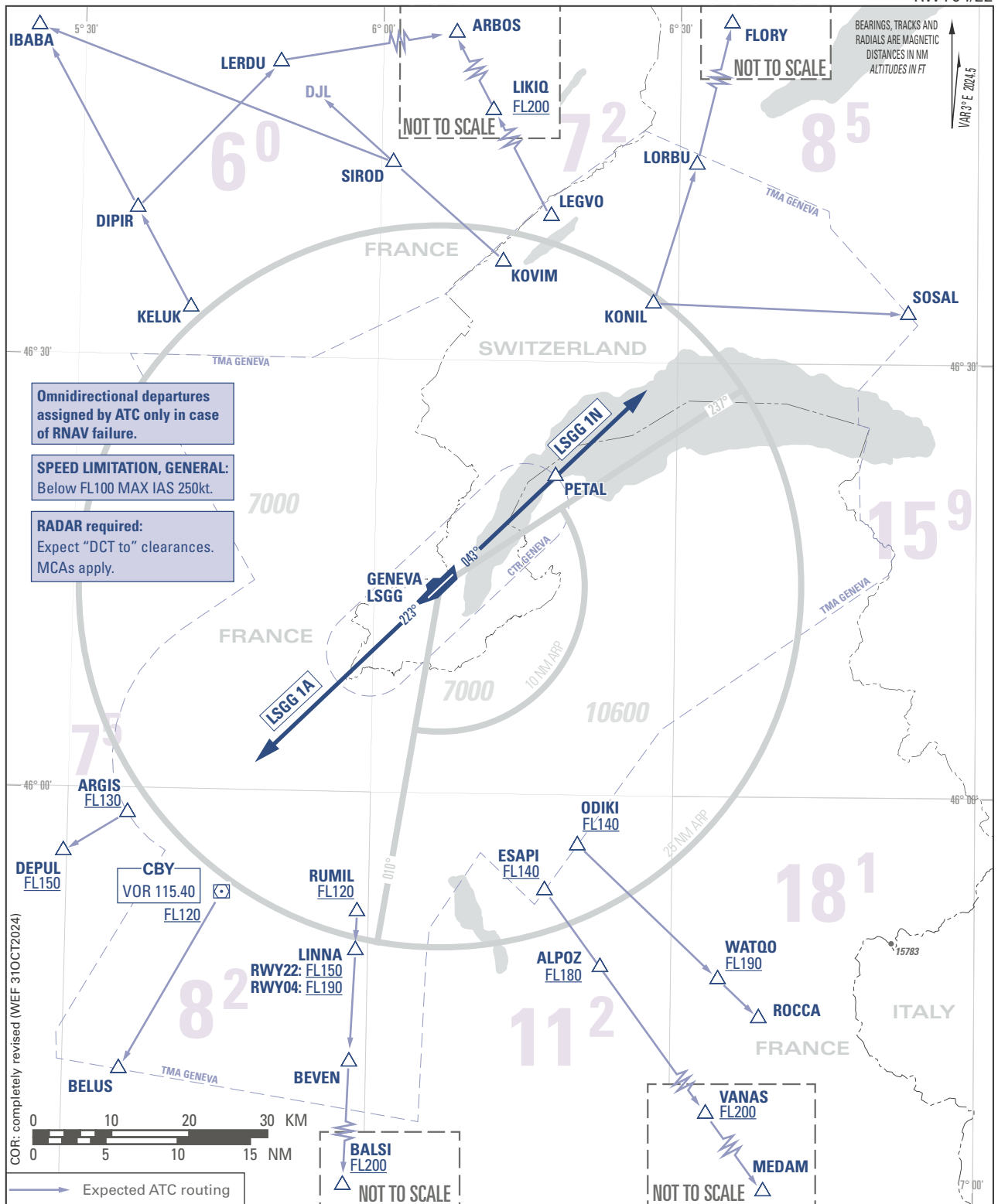


OMNIDIRECTIONAL DEPARTURE CHART

TRANSITION LEVEL by ATC
TRANSITION ALTITUDE 7000

GENEVA LSGG
OMNIDIRECTIONAL DEPARTURES
RWY04/22



Omnidirectional departures assigned by ATC only in case of RNAV failure.

SPEED LIMITATION, GENERAL:
Below FL100 MAX IAS 250kt.

RADAR required:
Expect "DCT to" clearances.
MCAs apply.

COR: completely revised (WEF 31 OCT 2024)



Expected ATC routing

COMMUNICATION FAILURE PROCEDURE:

- Set transponder on code 7600.
- Climb to FL090 or last assigned and acknowledged FL.
- Leave last assigned and acknowledged FL earliest three minutes after airborne.
- Continue climb to FPL FL and proceed to first en-route point according to FPL but not below grid AMA.
- For ACFE equipped with onboard telephone, dial +41 22 798 7600 and mention last RTF channel used.

Initial climb clearance: **FL090**

| | |
|---|--|
| RWY 04: GENEVA ONE NOVEMBER PDG 5.4% to 6100ft. | Climb straight ahead on track 043° to FL090, continue to en-route as cleared by ATC. |
| RWY 22: GENEVA ONE ALPHA PDG 7.6% to 6200ft. | Climb straight ahead on track 223° to FL090, continue to en-route as cleared by ATC. |

CLOSE-IN OBST: RWY 04/22 - Trees and poles each side of RWY centre line up to 170ft AGL above DER ELEV (REF AIP LSGG AD 2.10).

Notes:

- Strict adherence to initial climb nominal track required for noise abatement.
- For expected ATC routing REF AIP LSGG AD 2.22 §1.1.2.

THIS PAGE INTENTIONALLY LEFT BLANK