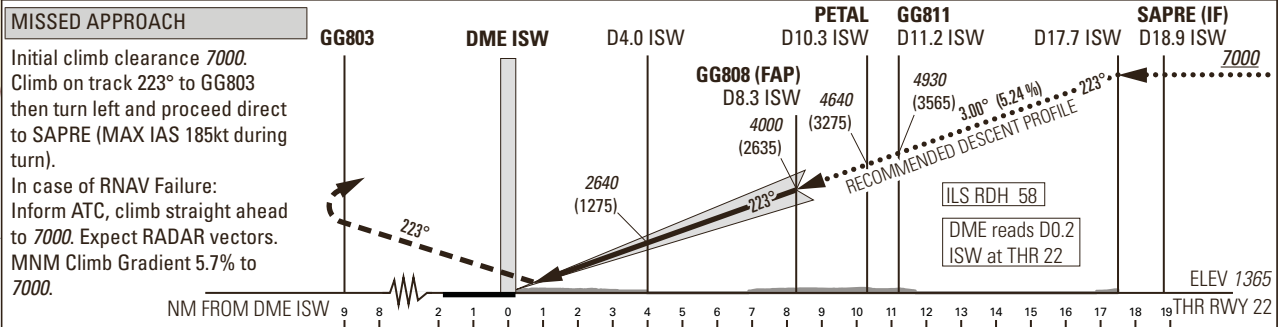
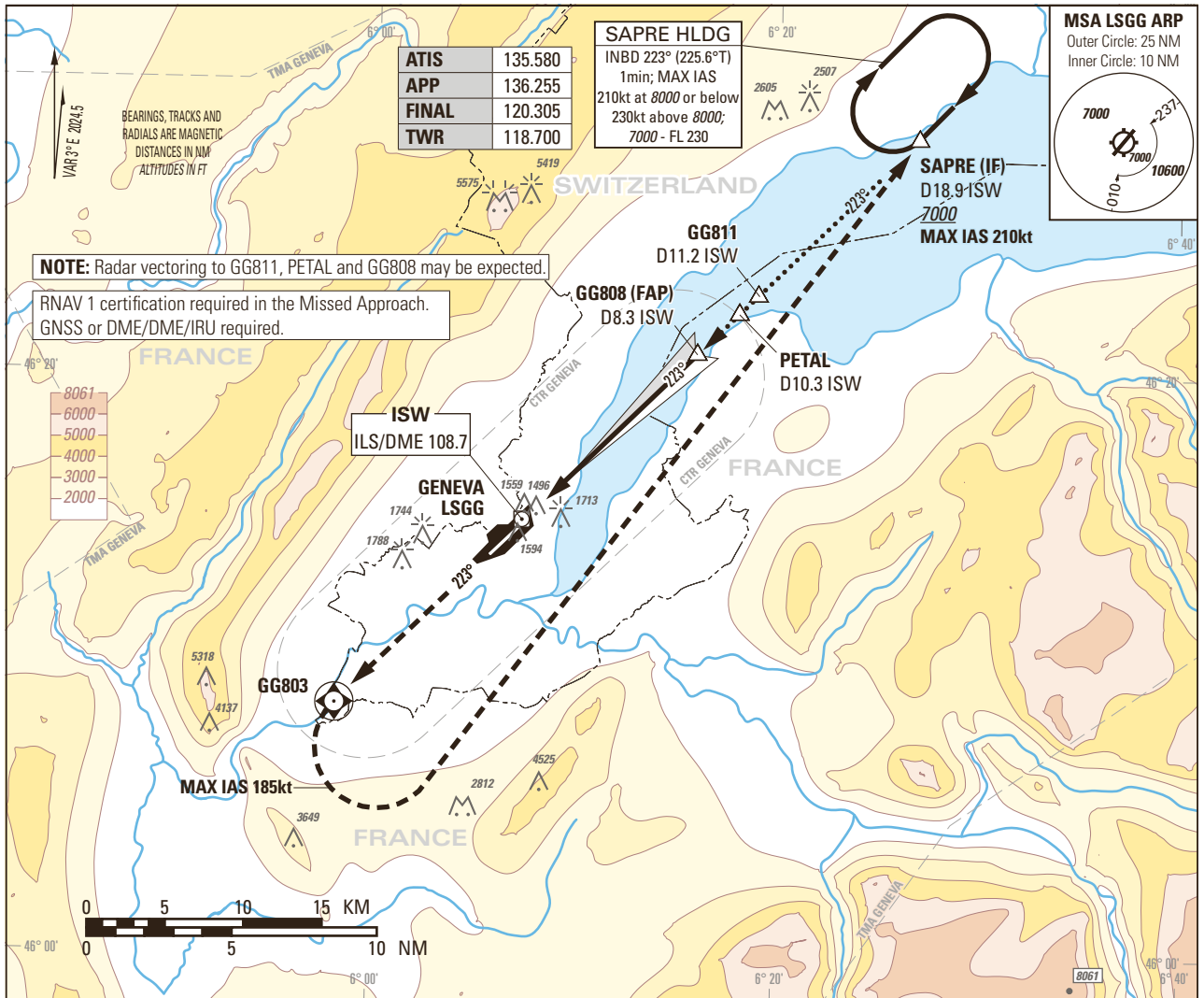


Instrument Approach Chart
(IAC) - ICAO

AD ELEV 1411ft

TRANSITION LEVEL by ATC
TRANSITION ALTITUDE 7000

GENEVA LSGG
ILS RWY 22
CAT II & CAT III



| OBSTACLE CLEARANCE ALTITUDE (HEIGHT) ¹⁾ | | | | | |
|--|--------------|-------------|-------------|-------------|-------------|
| Missed APCH climb gradient requirement | | | | | |
| | A | B | C | D | |
| CAT I pressure altimeter | 2.5% | 2420 (1055) | 2430 (1065) | 2440 (1075) | 2450 (1085) |
| CAT I pressure altimeter | 4.2% to 4800 | 1530 (165) | 1538 (173) | 1548 (183) | 1560 (195) |
| CAT I radio altimeter | | 1432 (67) | 1438 (73) | 1449 (84) | 1465 (100) |
| CAT II radio altimeter and autopilot | | 1427 (62) | 1436 (71) | 1447 (82) | 1464 (99) |
| DECISION ALTITUDE (HEIGHT) ¹⁾ | | | | | |
| | A | B | C | D | |
| CAT I pressure ²⁾ altimeter | 4.2% to 4800 | 1565 (200) | | | |
| CAT I radio altimeter | | 1465 (100) | | | |
| CAT II radio altimeter and autopilot ²⁾ | | 1465 (100) | | | |
| Circling ^{3) 4)} | | 2100 (689) | 2150 (739) | 2400 (989) | |

| DIST DME ISW | 2 | 4 | 6 | 8 | 8.3 | 10 | 12 | 14 | 16 |
|--------------------------|--------|------|------|------|------|------|------|------|------|
| recommended CROSSING ALT | 2000 | 2640 | 3280 | 3910 | 4000 | 4550 | 5190 | 5820 | 6460 |
| ROD | GS kt | 90 | 110 | 130 | 150 | | | | |
| | FT/MIN | 478 | 584 | 690 | 796 | | | | |

NOTE
¹⁾ Above THR elevation 1365ft.
²⁾ Radio altimeter reading at CAT I DH 216ft, at CAT II DH 108ft, for lower operating minima (DH and RVR) PPR FOCA.
³⁾ Above aerodrome ELEV 1411ft, circling on request of ATC under special conditions and north of RWY only, speed (MAX IAS 180kt) and radius for category D as for category C aircraft.
⁴⁾ Circling must remain inside CTR at all times.

COR: completely revised (WEF 31OCT2024)

THIS PAGE INTENTIONALLY LEFT BLANK