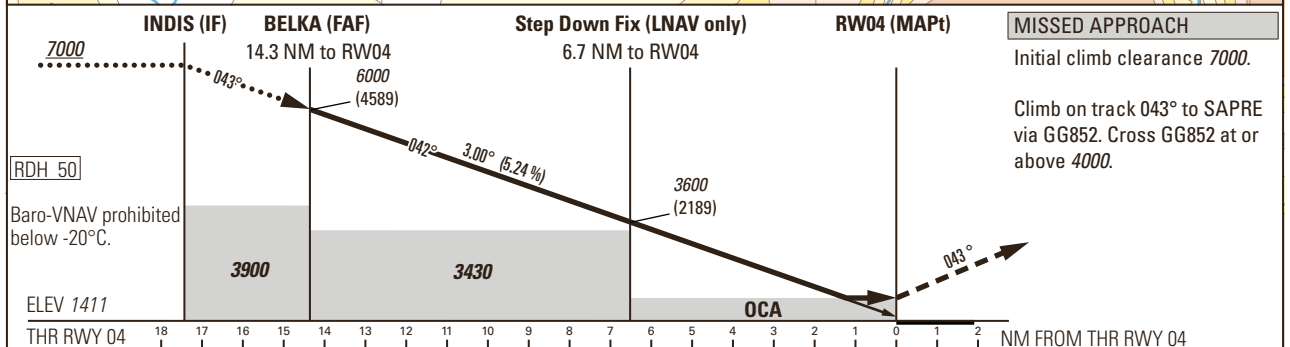
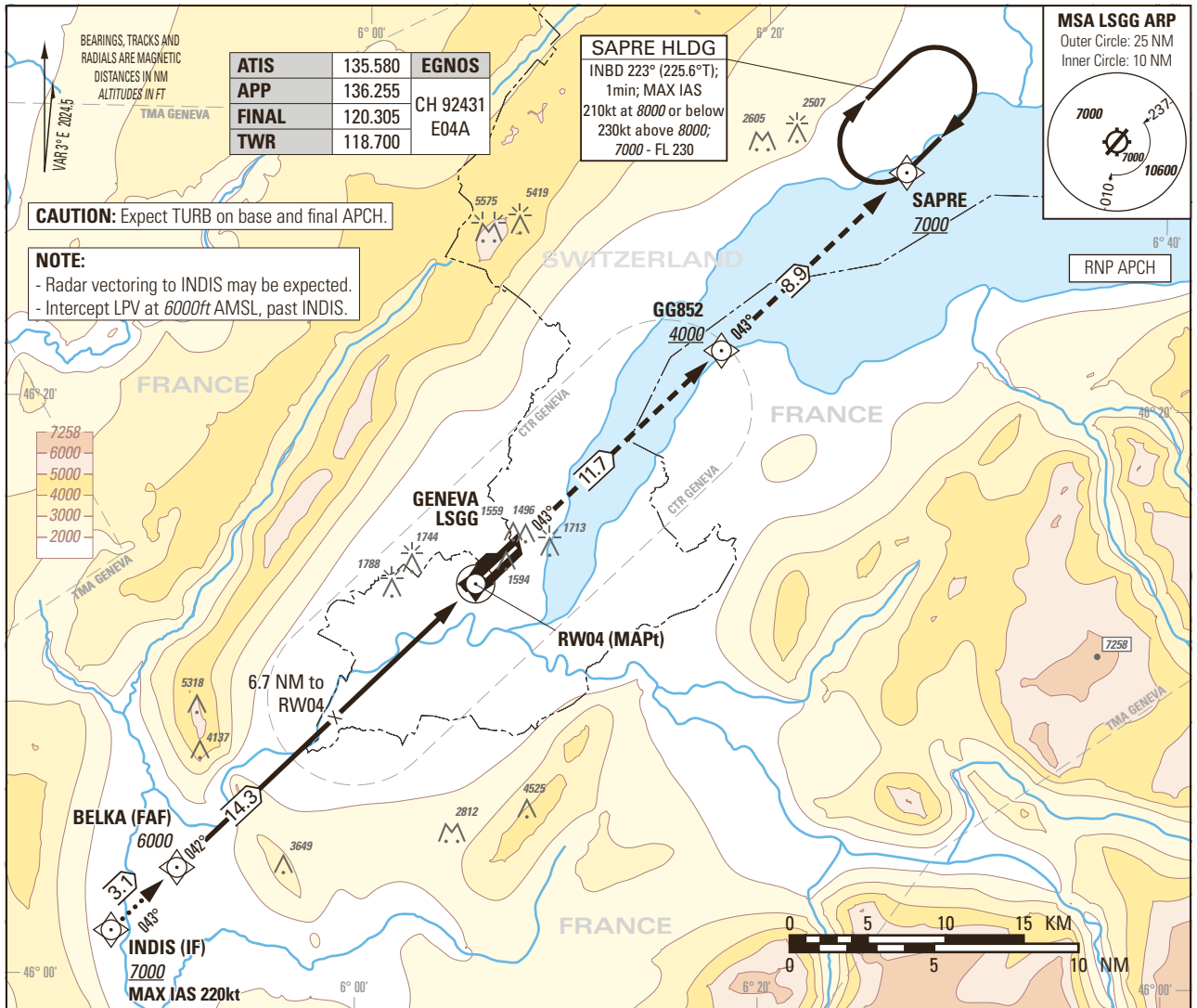


Instrument Approach Chart
(IAC) - ICAO

AD ELEV 1411ft

TRANSITION LEVEL by ATC
TRANSITION ALTITUDE 7000

GENEVA LSGG
RNP RWY 04



Missed APCH climb gradient requirement	STRAIGHT-IN APPROACH				DIST RWY 04										
	A	B	C	D	17.4	16	14.3	12	10	8	6.7	6	4	2	
2.5%	OCA(H) LPV CAT I				recommended crossing	7000	6560	6000	5290	4650	4010	3600	3380	2740	2100
					ALTITUDE (HEIGHT)	(5589)	(5149)	(4598)	(3879)	(3239)	(2599)	(2189)	(1969)	(1329)	(689)
					ROD			GS kt	90	110	130	150			
								FT/MIN	478	584	690	796			
Circling ¹⁾²⁾	2100 (689)	2150 (739)	2400 (989)												

CAUTION
0.5 NM before THR 04 Visual Segment Surface (VSS) penetrated by trees up to 1520ft AMSL.

NOTE
1) Circling on request of ATC under special conditions and north of RWY only, speed (MAX IAS 180kt) and radius for category D as for category C aircraft.
2) Circling must remain inside CTR at all times.

COR: completely revised (WEF 31OCT2024)

Input data

Operation Type	0
SBAS Provider	1
Airport Identifier	LSGG
Runway	04
Runway Direction	0
Approach Performance Designator	0
Route Indicator	
Reference Path Data Selector	0
Reference Path Identifier	E04A
LTP/FTP Latitude	461340.2340N
LTP/FTP Longitude	0060538.2400E
LTP/FTP Ellipsoidal Height (metres)	479.9
FPAP Latitude	461505.8430N
Delta FPAP Latitude (seconds)	85.6090
FPAP Longitude	0060743.8945E
Delta FPAP Longitude (seconds)	125.6545
Threshold Crossing Height	50.0
TCH Units Selector	0
Glidepath Angle (degrees)	3.00
Course Width (metres)	105.00
Length Offset (metres)	144
HAL (metres)	40.0
VAL (metres)	35.0

Output data

Data Block	10 07 07 13 0C 04 00 00 01 34 30 05 14 BE D6 13 80 80 9D 02 BF 26 D2 9C 02 AD D5 03 F4 01 2C 01 64 12 C8 AF 03 D3 C8 33
Calculated CRC Value	03D3C833

Required Additional Data

ICAO Code	LS
LTP/FTP Orthometric Height (metres)	430.1
FPAP Orthometric Height (metres)	