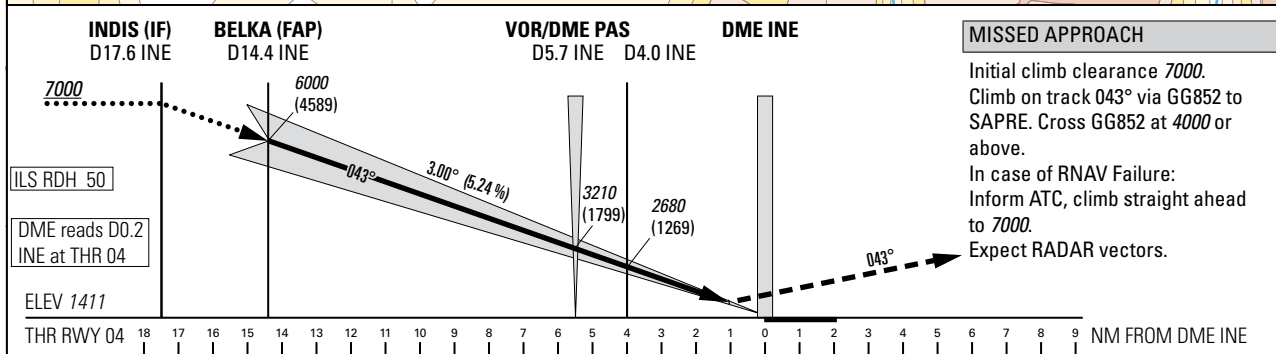
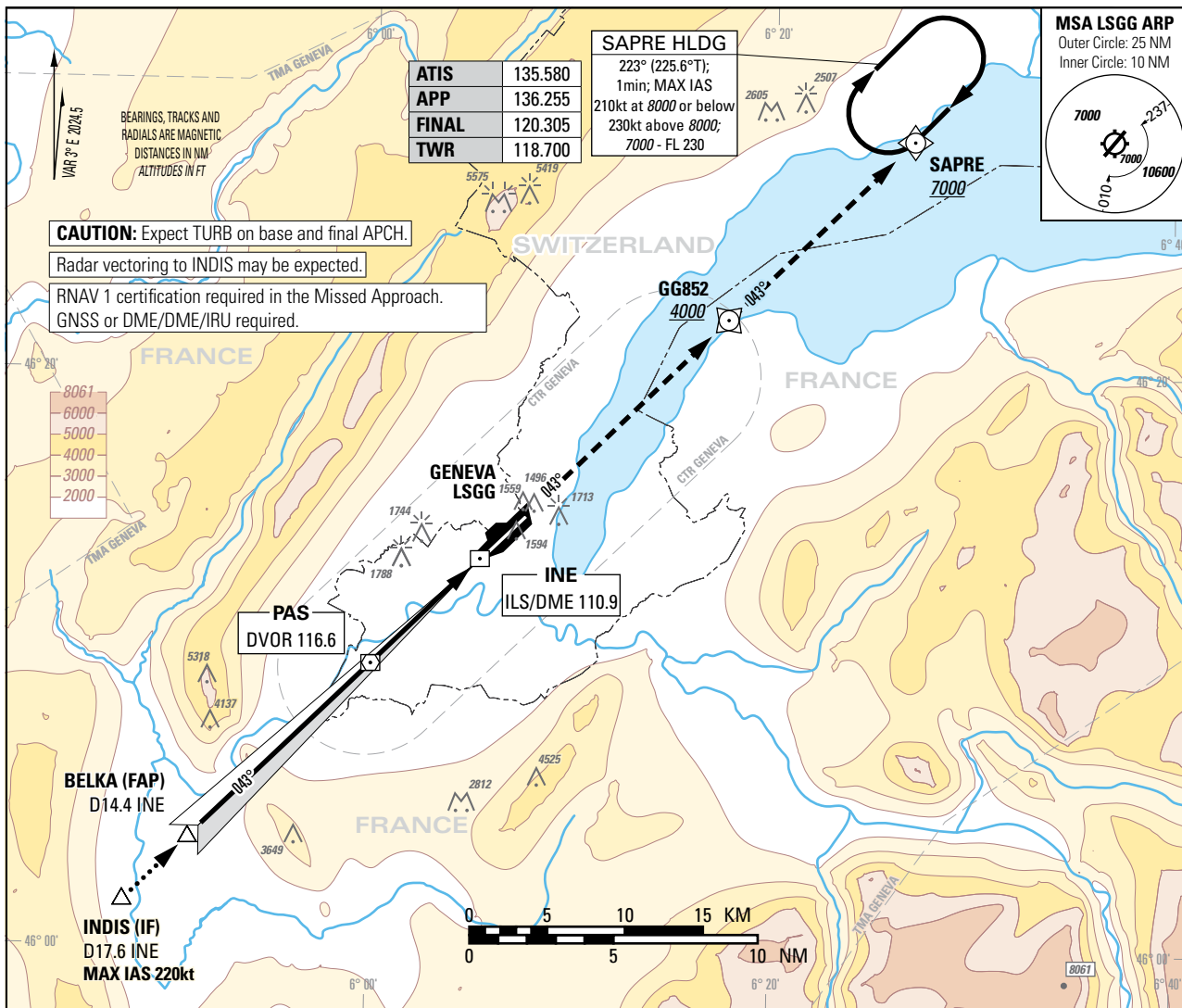


Instrument Approach Chart
(IAC) - ICAO

AD ELEV 1411ft

TRANSITION LEVEL by ATC
TRANSITION ALTITUDE 7000

GENEVA LSGG
ILS RWY 04



| OBSTACLE CLEARANCE ALTITUDE (HEIGHT) | | | | | | |
|--------------------------------------|--------------------|----------------------|------------|------------|------------|------------|
| A B C D | | | | | | |
| CAT I | pressure altimeter | Straight-in approach | 1601 (190) | 1609 (198) | 1617 (206) | 1627 (216) |
| DECISION ALTITUDE (HEIGHT) | | | | | | |
| A B C D | | | | | | |
| CAT I | pressure altimeter | | 1611 (200) | 1617 (206) | 1627 (216) | |
| Circling ¹⁾²⁾ | | | 2100 (689) | 2150 (739) | 2400 (989) | |

| DIST DME INE | 16 | 14 | 12 | 10 | 8 | 6 | 4 | 2 |
|--------------------------|--------|------|------|------|------|------|------|------|
| recommended CROSSING ALT | 6510 | 5870 | 5230 | 4590 | 3960 | 3320 | 2680 | 2050 |
| ROD | GS kt | | 90 | 110 | 130 | 150 | | |
| | FT/MIN | | 478 | 584 | 690 | 796 | | |

NOTE
¹⁾ Circling on request of ATC under special conditions and north of RWY only, speed (MAX IAS 180kt) and radius for category D as for category C aircraft.
²⁾ Circling must remain inside CTR at all times.

COR: completely revised (WEF 31OCT2024)

THIS PAGE INTENTIONALLY LEFT BLANK