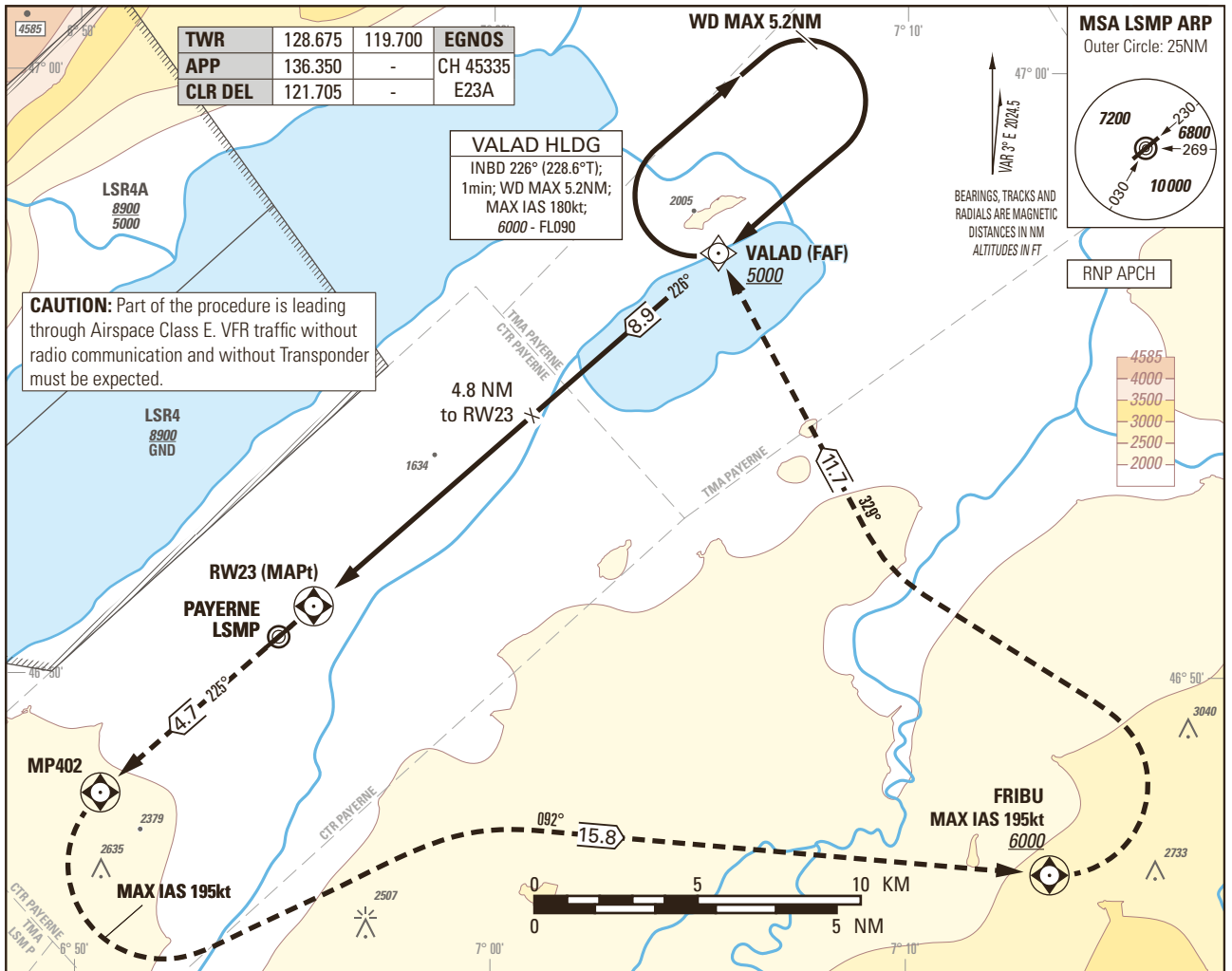


Instrument Approach Chart
(IAC) - ICAO

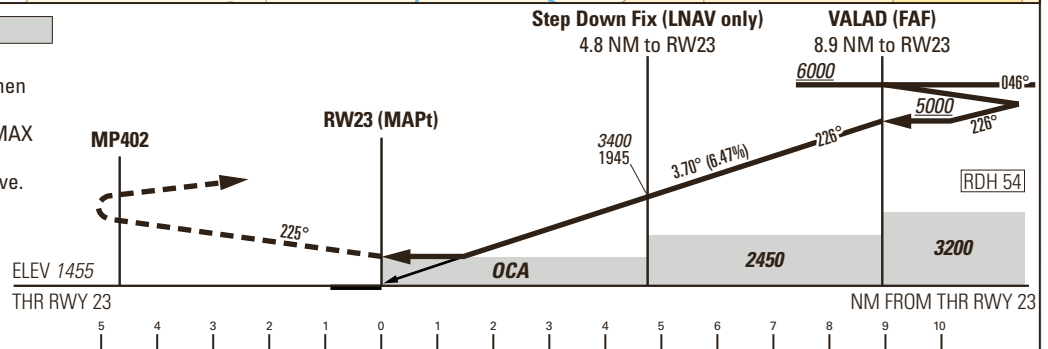
AD ELEV 1466ft

TRANSITION LEVEL by ATC
TRANSITION ALTITUDE 6000

PAYERNE LSMP
RNP Z RWY 23
ACFT CAT A/B/C/D



MISSED APPROACH
Climb to 6000.
Straight ahead to MP402, then turn left (MAX IAS 195kt) to FRIBU. At FRIBU turn left (MAX IAS 195kt) to VALAD.
Cross FRIBU at 6000 or above.



Missed APCH climb gradient requirement	STRAIGHT-IN APPROACH			
	A	B	C	D
	OBSTACLE CLEARANCE ALTITUDE (HEIGHT) LNAV			
2.5%	2200 (745)			
3.1% to 2700	2080 (625)			
	OBSTACLE CLEARANCE ALTITUDE (HEIGHT) LPV (CAT-I)			
2.5%	2052 (597)	2065 (610)	2078 (623)	2091 (636)
4.4% to 2700	1712 (257)	1725 (270)	1738 (283)	1751 (296)
	DECISION ALTITUDE (HEIGHT) LPV			
4.4% to 2700	1813 (358)			
CIRCLING ¹⁾	A	B	C	D
OCA(H)	2120 (654)	2460 (994)	2790 (1324)	2830 (1364)

RWY23 DIST recommended CROSSING ALT	2.0	3.0	4.0	5.0	6.0	7.0	8.0	8.9
		2290	2690	3080	3470	3870	4260	4650

ROD	GS kt	90	110	130	150
	FT/MIN	589	720	851	982

NOTE
¹⁾ Circling north of RWY only. Circling must remain inside CTR at all time. Remain SE of Lake Neuchatel. MAX distance parallel of RWY for all ACFT Cat: 2 NM.

CAUTION
- MAX GS 150kt in final approach to avoid ROD > 1000ft/min.
- Non-standard approach angle.

REMARK
- OBST limitation and restriction according to non-instrument RWY criteria.

COR: completely revised (WEF 31OCT2024)

Input data

Operation Type	0
SBAS Provider	1 (EGNOS)
Airport Identifier	LSMP
Runway	23
Runway Letter	0 (None)
Approach Performance Designator	0
Route Indicator	Z
Reference Path Data Selector	0
Reference Path Identifier	E23A
LTP/FTP Latitude	465103.1035N
LTP/FTP Longitude	0065539.0165E
LTP/FTP Ellipsoidal Height (metres)	492.7
FPAP Latitude	465005.9485N
Delta FPAP Latitude (seconds)	-57.1550
FPAP Longitude	0065404.7990E
Delta FPAP Longitude (seconds)	-94.2175
Threshold Crossing Height	54.0
TCH Units Selector	0 (feet)
Glidepath Angle (degrees)	3.70
Course Width (metres)	105.00
Length Offset (metres)	0
HAL (metres)	40.0
VAL (metres)	35.0

Output data

Data Block	10 10 0D 13 0C 17 D0 00 01 33 32 05 7F 30 1B 14 11 14 F9 02 3F 27 7A 41 FE ED 1F FD 1C 02 72 01 64 00 C8 AF 41 7C FB D8
Calculated CRC Value	417CFBD8

Required Additional Data

ICAO Code	LS
LTP/FTP Orthometric Height (metres)	443.4