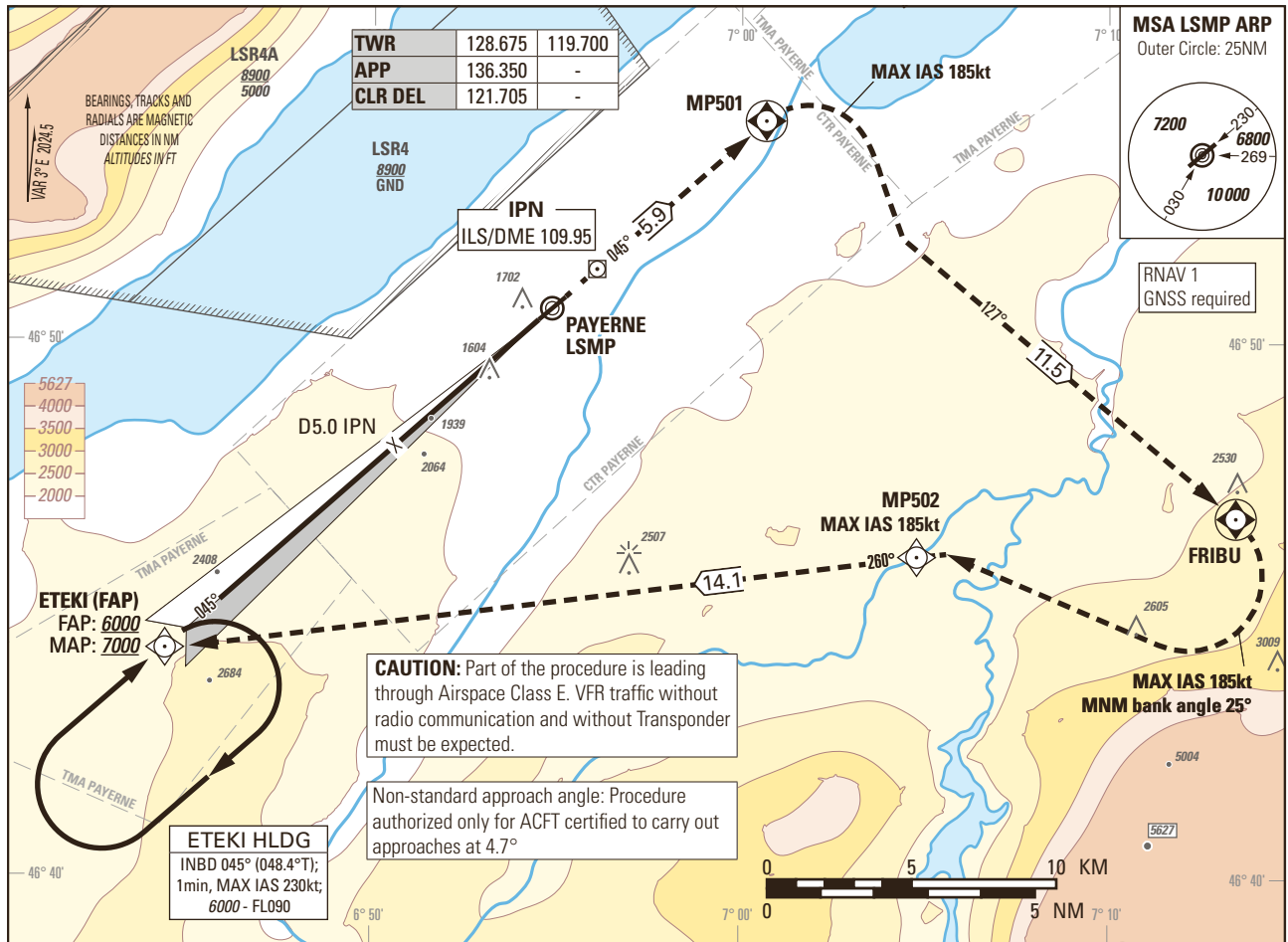


Instrument Approach Chart
(IAC) - ICAO

AD ELEV 1466ft

TRANSITION LEVEL by ATC
TRANSITION ALTITUDE 6000

PAYERNE LSMP
ILS RWY 05
ACFT CAT A/B/C/D



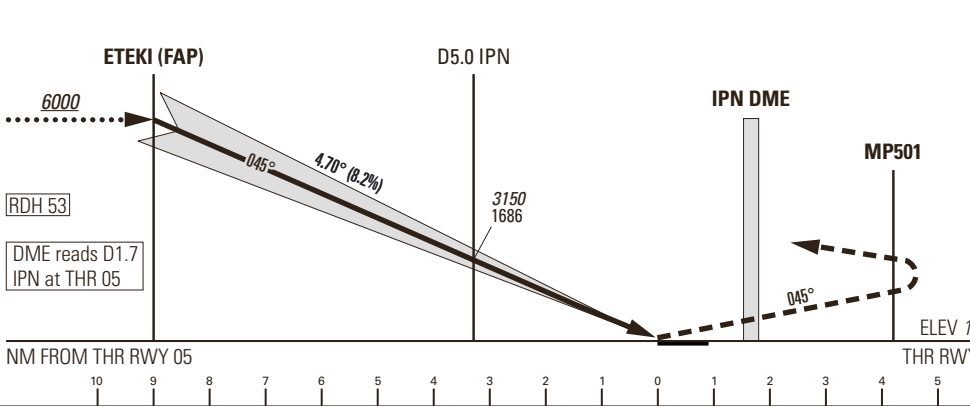
CAUTION: Part of the procedure is leading through Airspace Class E. VFR traffic without radio communication and without Transponder must be expected.

Non-standard approach angle: Procedure authorized only for ACFT certified to carry out approaches at 4.7°

ETEKI HLDG
INBD 045° (048.4°T);
1min, MAX IAS 230kt;
6000 - FL090

MISSED APPROACH

Climb to 7000. Straight ahead to MP501 then turn right (MAX IAS 185kt) to FRIBU. At FRIBU turn right (MAX IAS 185kt, MNM bank angle 25°) direct to MP502 and continue to ETEKI.



Missed APCH climb gradient requirement	STRAIGHT-IN APPROACH			
	A	B	C	D
	OBSTACLE CLEARANCE ALTITUDE (HEIGHT)			
2.5%	2999 (1535)	3022 (1558)	3042 (1578)	3062 (1598)
4.1% to 5900	1730 (266)	1753 (289)	1772 (308)	1792 (328)
	DECISION ALTITUDE (HEIGHT)			
4.1% to 5900	1867 (403)			
CIRCLING ¹⁾	A	B	C	D
OCA(H)	2120 (654)	2460 (994)	2790 (1324)	2830 (1364)

IPN DME	10.7	10.0	9.0	8.0	7.0	6.0	5.0
recommended CROSSING ALT	6000	5640	5140	4640	4140	3650	3150

NOTE
¹⁾ Circling north of RWY only. Circling must remain inside CTR at all time. Remain SE of Lake Neuchatel. MAX distance parallel of RWY for all ACFT Cat: 2NM.

REMARK
- Uncategorized ILS APCH RWY 05 due to OBST limitation and restriction according to non-instrument RWY criteria.
- ILS05 signal fulfills ICAO Annex 10, CAT I specifications.

ROD	GS kt	90	110	130	150
	FT/MIN	749	916	1082	1249

COR: completely revised (WEF 31OCT2024)

THIS PAGE INTENTIONALLY LEFT BLANK