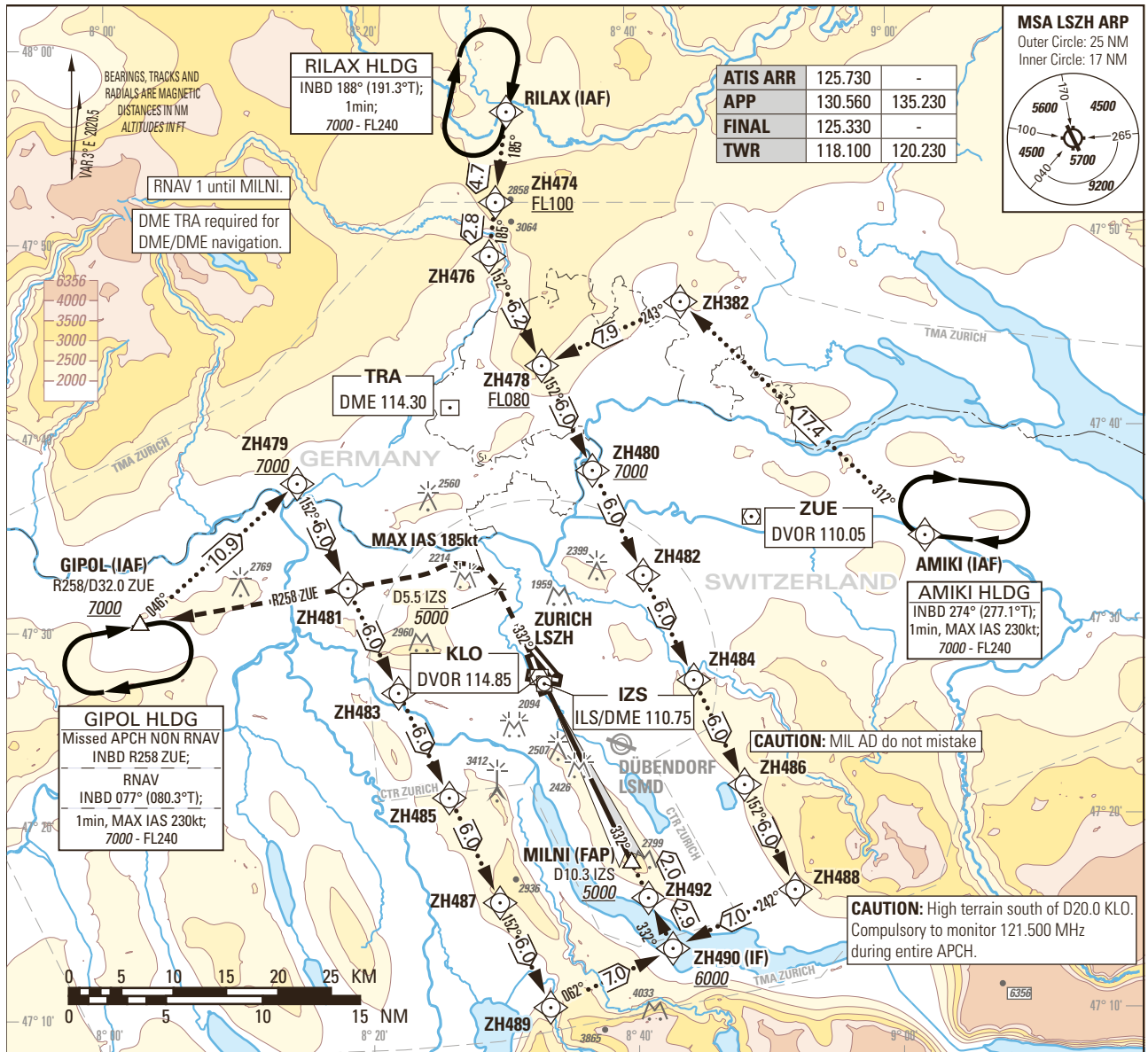


Instrument Approach Chart
(IAC) - ICAO

AD ELEV 1417ft

TRANSITION LEVEL by ATC
TRANSITION ALTITUDE 7000

ZURICH LSZH
ILS RWY 34

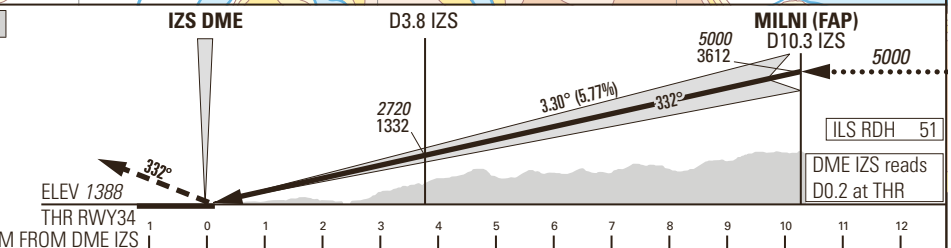


MSA LSZH ARP
Outer Circle: 25 NM
Inner Circle: 17 NM

Altitudes shown in the MSA diagram: 5600, 4500, 100, 4500, 5700, 9200.

ATIS ARR	125.730	-
APP	130.560	135.230
FINAL	125.330	-
TWR	118.100	120.230

MISSED APPROACH
Initial climb clearance 5000.
Climb straight ahead. At D5.5 IZS past the station turn left (MAX IAS 185kt during turn) and intercept R258 ZUE. Continue climb to 7000. Proceed to GIPOL.
Cross D5.5 IZS at or below 5000.
Cross GIPOL at or above 7000.



Missed APCH climb gradient requirement	STRAIGHT-IN APPROACH					ROD	GS kt	90	110	130	150
	A	B	C	D	D _L						
OBSTACLE CLEARANCE ALTITUDE (HEIGHT)											
2.5%	pressure altimeter	1592 (204)	1602 (214)	1615 (227)	1625 (237)						
2.8% to 2200	pressure altimeter	1543 (155)	1552 (164)	1560 (172)	1571 (183)	1572 (184)					
DECISION ALTITUDE (HEIGHT)											
2.8% to 2200	pressure altimeter	1588 (200)									
IZS DME		2	3	4	5	6	7	8	9	10	
RECOMMENDED CROSSING ALTITUDE (HEIGHT)		2090 (700)	2440 (1050)	2790 (1400)	3140 (1750)	3490 (2100)	3840 (2450)	4190 (2800)	4540 (3150)	4890 (3500)	

COR: completely revised (WEF 03OCT2024)

THIS PAGE INTENTIONALLY LEFT BLANK