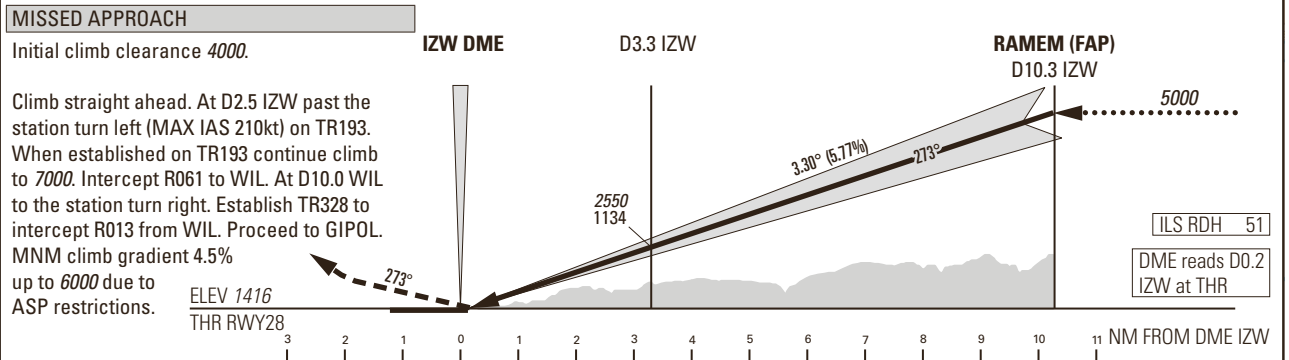
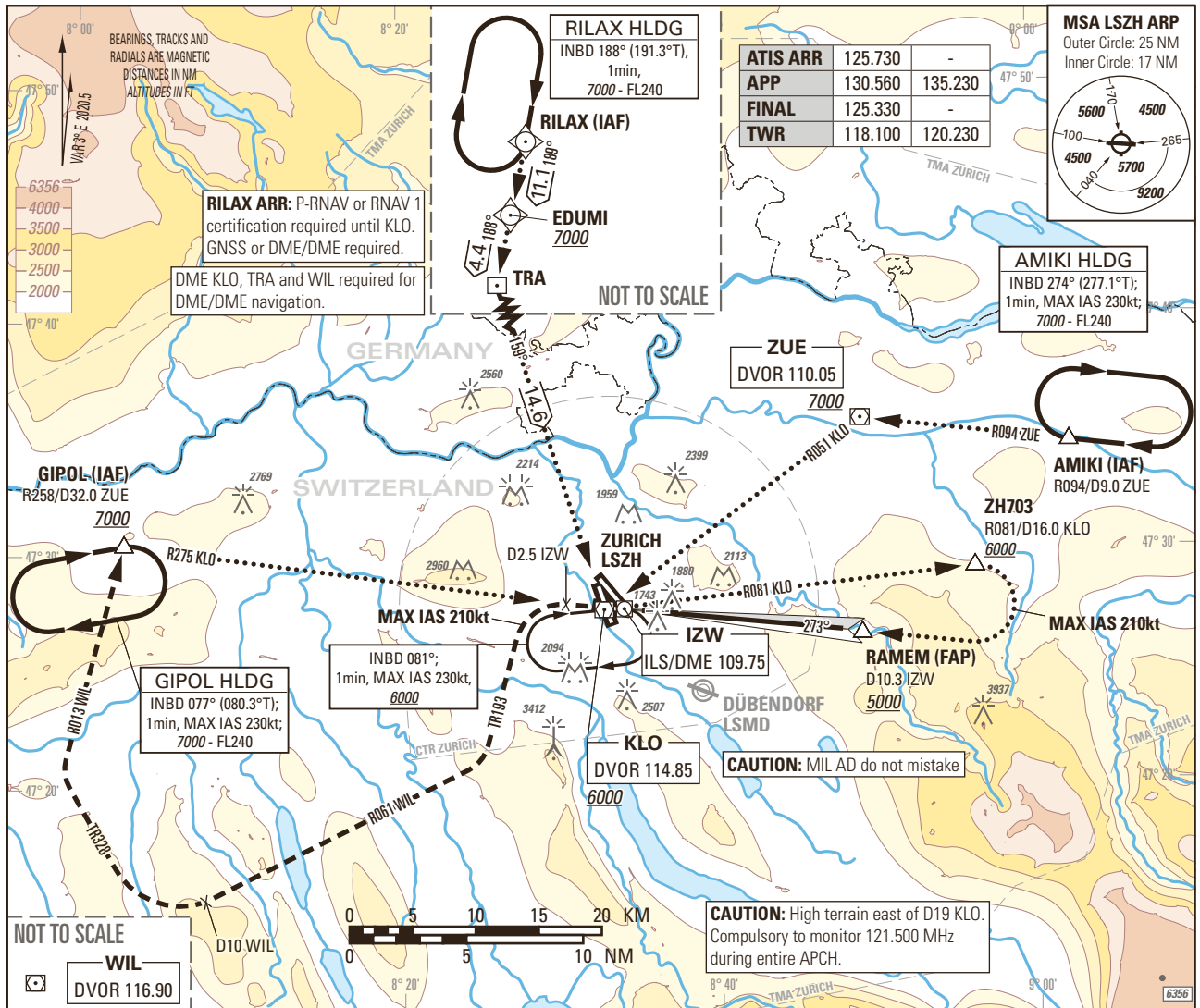


Instrument Approach Chart (IAC) - ICAO

AD ELEV 1417ft

TRANSITION LEVEL by ATC  
TRANSITION ALTITUDE 7000

ZURICH LSZH  
ILS RWY 28



Missed APCH climb gradient requirement	STRAIGHT-IN APPROACH				
	A	B	C	D	D <sub>L</sub>
OBSTACLE CLEARANCE ALTITUDE (HEIGHT)					
2.5%	pressure altimeter	2270 (854)	2280 (864)	2293 (877)	2303 (887)
4.0% to 2700	pressure altimeter	2069 (653)	2079 (663)	2092 (676)	2102 (686)
DECISION ALTITUDE (HEIGHT)					
2.5%	pressure altimeter	2270 (854)	2280 (864)	2293 (877)	2303 (887)
4.0% to 2700	pressure altimeter	2091 (675)	2091 (675)	2092 (676)	2102 (686)

**CAUTION**

- Do not confuse RWY 32 with RWY 28.
- Bright floodlight slightly N of APCH at D0.7 IZW.
- Expect turbulences on short final during south-westerly winds.
- Nuisance GPWS glideslope warning may be expected below 100ft THR.
- 0.4NM BFR THR28 visual segment surface (VSS) penetrated by trees up to 1496ft AMSL.

**REMARK**

- Uncategorised ILS APCH RWY 28 due to obstacle limitation and restriction according to non-instrument RWY criteria.
- ILS 28 signal fulfils ICAO Annex 10, CAT I specifications.

ROD	GS kt	90	110	130	150
	FT/MIN		526	642	759

COR: WIL VOR renewed to DVOR (WEF 15JUN2023)

THIS PAGE INTENTIONALLY LEFT BLANK