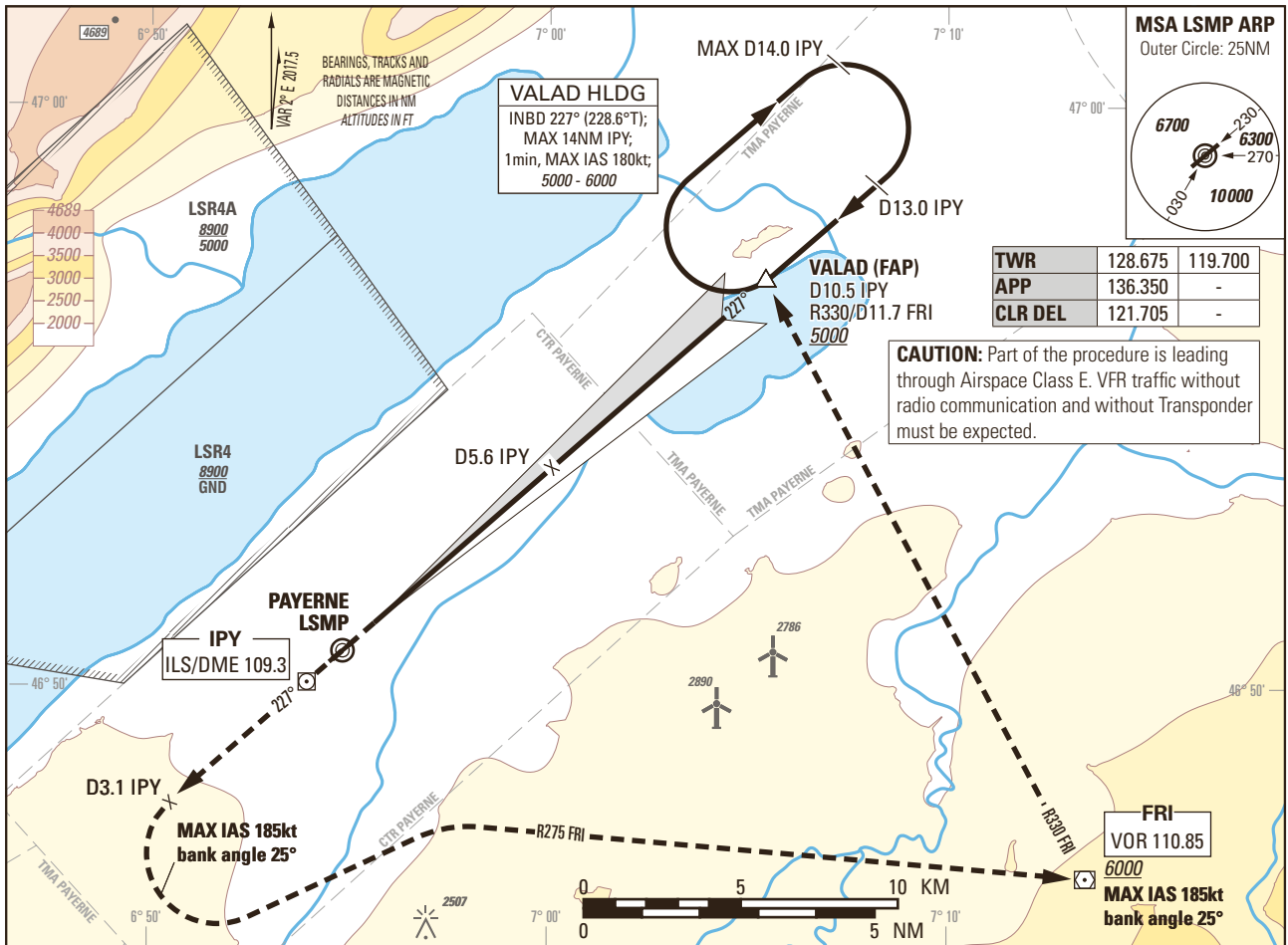


Instrument Approach Chart
(IAC) - ICAO

AD ELEV 1465ft

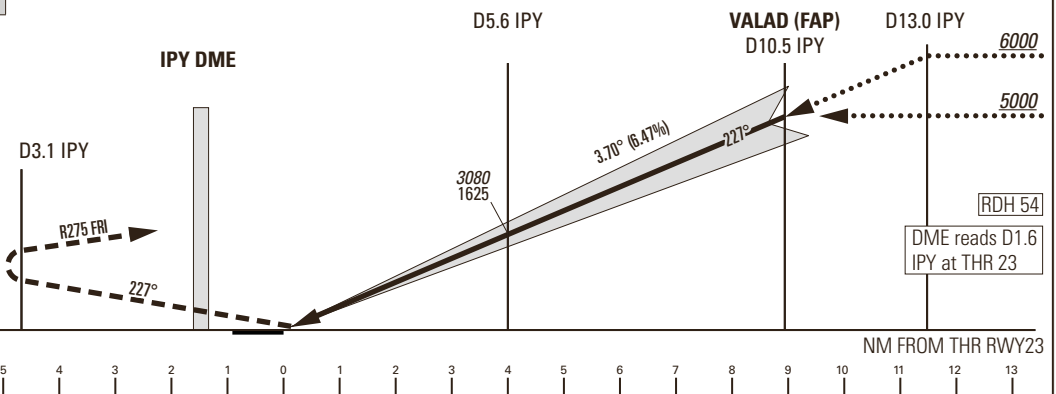
TRANSITION LEVEL by ATC
TRANSITION ALTITUDE 6000

PAYERNE LSMP
ILS 3.7° RWY 23
ACFT CAT A/B/C/D



MISSED APPROACH

Climb straight ahead.
At D3.1 IPY turn left
(MAX IAS 185kt, bank angle 25°), intercept FRI R275 inbound. Leave FRI R330 outbound (MAX IAS 185kt, bank angle 25°), proceed to VALAD. Climb to 6000. MNM climb gradient 5.2% to 5000 to remain inside controlled airspace.



| Missed APCH climb gradient requirement | STRAIGHT-IN APPROACH | | | |
|--|--------------------------------------|------------|-------------|-------------|
| | A | B | C | D |
| | OBSTACLE CLEARANCE ALTITUDE (HEIGHT) | | | |
| 2.5% | 2060 (605) | 2074 (619) | 2086 (631) | 2100 (645) |
| 4.0% to 2600 | 1771 (316) | 1784 (329) | 1797 (342) | 1810 (355) |
| | DECISION ALTITUDE (HEIGHT) | | | |
| 4.0% to 2600 | 1955 (500) | | | |
| CIRCLING ¹⁾ | A | B | C | D |
| OCA(H) | 2120 (655) | 2460 (995) | 2790 (1325) | 2830 (1365) |

| IPY DME | 3 | 4 | 5 | 6 | 8 | 10 | 10.5 | 13 |
|--------------------------|------|------|------|------|------|------|------|------|
| recommended CROSSING ALT | 2060 | 2450 | 2850 | 3240 | 4020 | 4810 | 5000 | 6000 |

NOTE
¹⁾ Circling north of RWY only. Circling must remain inside CTR at all time. Remain SE of Lake Neuchatel. MAX distance parallel of RWY for all ACFT Cat: 2NM.

CAUTION
- MAX GS 150kt in final approach to avoid ROD > 1000ft/min.
- Non-standard approach angle.

REMARK
- Uncategorized ILS APCH RWY 23 due to OBST limitation and restriction according to non-instrument RWY criteria.
- ILS23 signal fulfills ICAO Annex 10, CAT I specifications.

COR: Circling OCA(H) CAT A/B (WEF 18APR2024)

THIS PAGE INTENTIONALLY LEFT BLANK