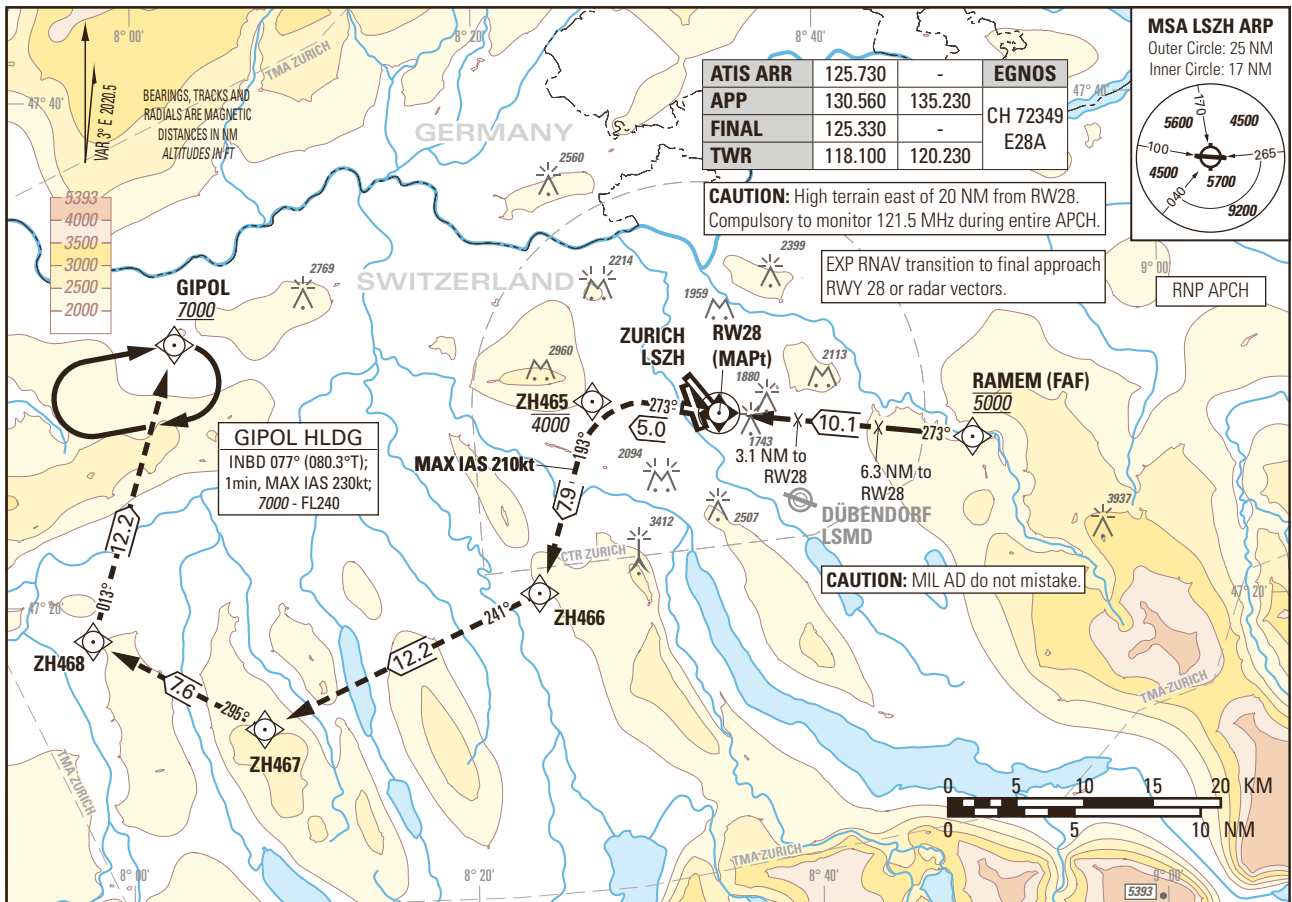


Instrument Approach Chart  
(IAC) - ICAO

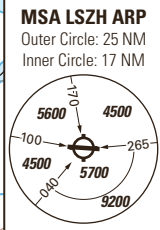
AD ELEV 1417ft

TRANSITION LEVEL by ATC  
TRANSITION ALTITUDE 7000

ZURICH LSZH  
RNP RWY 28



ATIS ARR	125.730	-	EGNOS
APP	130.560	135.230	CH 72349
FINAL	125.330	-	E28A
TWR	118.100	120.230	



**CAUTION:** High terrain east of 20 NM from RWY28. Compulsory to monitor 121.5 MHz during entire APCH.

EXP RNAV transition to final approach RWY 28 or radar vectors.

RNP APCH

**CAUTION:** MIL AD do not mistake.

**MISSED APPROACH**

Initial climb clearance 4000.

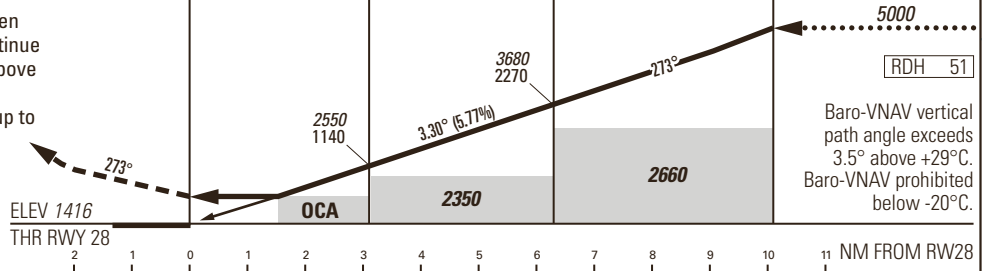
Climb straight ahead to ZH465. At ZH465 turn left to ZH466. Proceed via ZH466, ZH467, ZH468 to GIPOL. Cross ZH465 at or below 4000. When established on track to ZH466 continue climb to 7000. Cross GIPOL at or above 7000. MAX IAS 210kt until ZH466. LNAV: MNM climb gradient 4.8% up to 6000 due to ASP restrictions. LNAV/VNAV: MNM climb gradient 4.3% up to 6100 due to ASP restrictions. LPV: MNM climb gradient 4.5% up to 6000 due to ASP restrictions.

**RWY28 (MAPt)**

**Step Down Fix (LNAV only)**  
3.1 NM to RWY28

**Step Down Fix (LNAV only)**  
6.3 NM to RWY28

**RAMEM (FAF)**  
10.1 NM to RWY28



Missed APCH climb gradient requirement	STRAIGHT-IN APPROACH			
	A	B	C	D
	OCA (H) LNAV			
2.5%	2250 (840)			
	OCA (H) LNAV/VNAV			
2.5%	2176 (760)	2181 (765)	2187 (771)	2192 (776)
	OCA (H) LPV			
2.5%	2069 (653)	2079 (663)	2092 (676)	2102 (686)
	DA (H) LPV			
2.5%	2091 (675)	2092 (676)	2102 (686)	

ROD	GS kt			
	90	110	130	150
	FT/MIN			
	526	642	759	876

DIST RWY28	1	2	3	4	5	6	7	8	9	10
recommended CROSSING ALT	1820	2170	2520	2870	3220	3570	3920	4270	4620	4970
recommended CROSSING HGT	405	755	1105	1455	1805	2155	2505	2855	3205	3555

**NOTE**

- Do not confuse RWY 32 with RWY 28
- Bright floodlight slightly N of APCH at 0.5 NM from RWY 14
- Expect turbulences on short final during south-westerly winds.
- 3.1 NM before THR 28 Visual Segment Surface (VSS) penetrated by trees up to 1965ft AMSL on the right hand side of the final approach.

COR: completely revised (WEF 02DEC2021)

Input data

Operation Type	0
SBAS Provider	1 (EGNOS)
Airport Identifier	LSZH
Runway	28
Runway Letter	0 (None)
Approach Performance Designator	0
Route Indicator	
Reference Path Data Selector	0
Reference Path Identifier	E28A
LTP/FTP Latitude	472723.7555N
LTP/FTP Longitude	0083413.6295E
LTP/FTP Ellipsoidal Height (metres)	478.8
FPAP Latitude	472732.5515N
Delta FPAP Latitude (seconds)	8.7960
FPAP Longitude	0083209.7575E
Delta FPAP Longitude (seconds)	-123.8720
Threshold Crossing Height	51.0
TCH Units Selector	0 (feet)
Glidepath Angle (degrees)	3.30
Course Width (metres)	105.00
Length Offset (metres)	112
HAL (metres)	40.0
VAL (metres)	35.0

Output data

Data Block	10 08 1A 13 0C 1C 00 00 01 38 32 05 D7 BC 5D 14 FB 93 AD 03 B4 26 B8 44 00 40 38 FC FE 01 4A 01 64 0E C8 AF 39 56 F1 D6
Calculated CRC Value	3956F1D6

Required Additional Data

ICAO Code	LS
LTP/FTP Orthometric Height (metres)	431.6