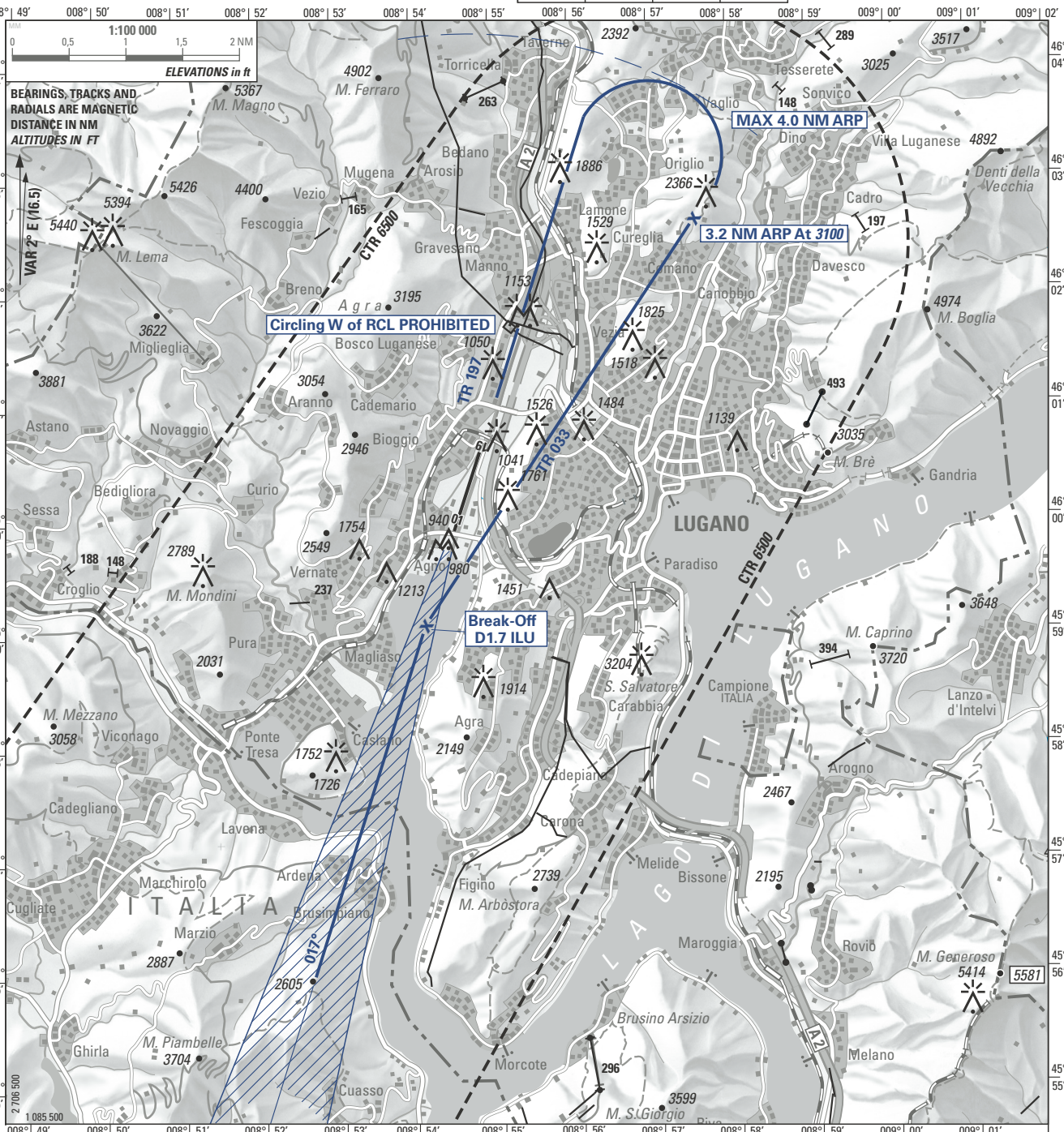


ATIS	121.175		
TWR	120.250	119.700	121.500
CLR DEL	121.780		

**LUGANO**  
 DAY ONLY  
 CIRCLING FOXTROT  
 RWY 19

CIRCLING  
 APPROACH  
 CHART

ELEV 915 ft (279 m)



**WARNING:** Disregard PAPI RWY 01 information.  
 Use PAPI RWY 19 information only within 2 NM from THR

Descent to be arranged to maintain clean configuration as long as possible, safety and ATC requirement considered.

OBST ELEV: ft / HGT: ft

OCA/H CIRCLING	VIS m	CEILING REQUIRED
A & B		
3100 (2185)	Day only 5000	3100 ft AAL
3500 (2585) if ceiling and VIS permit		or higher

**CIRCLING PROCEDURE**

If visual contact is established at D2.2 ILU, continue straight ahead. At D1.7 ILU turn right on track 033°, if ceiling and visibility permit maintain 3500 ft for noise abatement purposes (3100 ft procedure MNM) until 3.2 NM ARP.

At 3.2 NM ARP start left turn onto base.

COR: OBST (WEF 18APR2024)

© swisstopo

THIS PAGE INTENTIONALLY LEFT BLANK