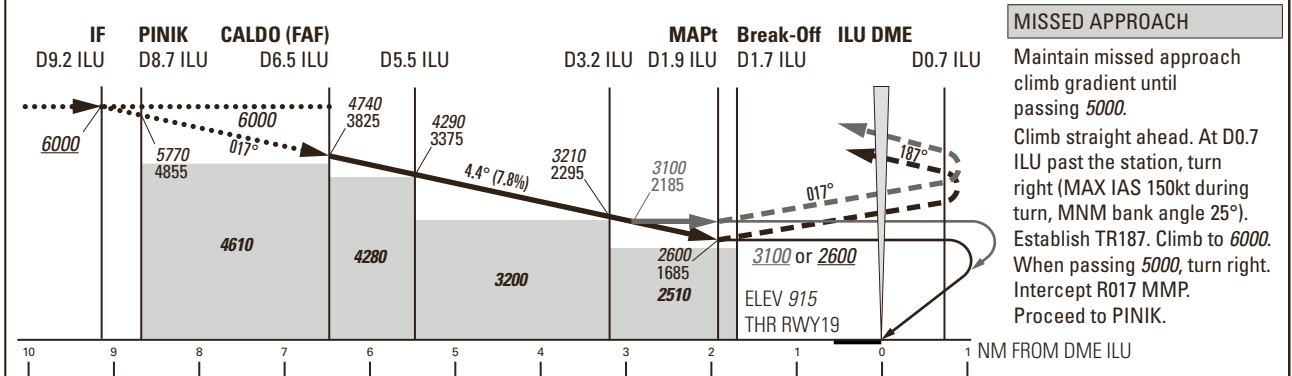
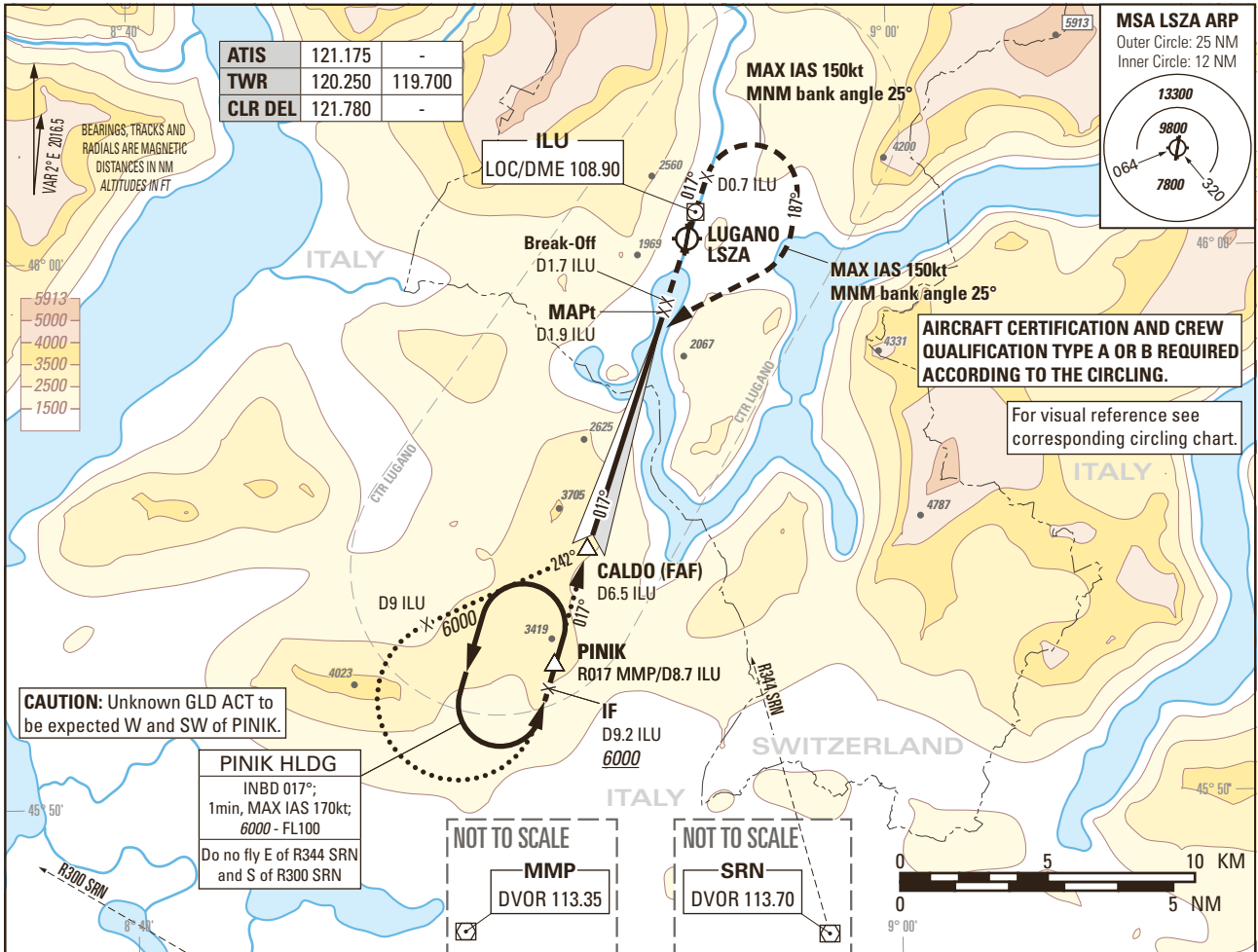


Instrument Approach Chart
(IAC) - ICAO

AD ELEV 915ft

TRANSITION LEVEL by ATC
TRANSITION ALTITUDE 6000

LUGANO LSZA
LOC RWY 01 / CIRCLING RWY 19
APPROACH 4.4°, ACFT CAT A/B



| DME ILU | 6 | 5 | 4 | 3 | 2 |
|--|-------------|-------------|-------------|-------------|-------------|
| RECOMMENDED CROSSING ALTITUDE (HEIGHT) | 4520 (3605) | 4050 (3135) | 3580 (2665) | 3110 (2195) | 2650 (1735) |

| ROD | GS kt | 70 | 80 | 90 | 110 | 130 | 150 |
|-----|--------|-----|-----|-----|-----|------|------|
| | FT/MIN | 545 | 623 | 701 | 857 | 1013 | 1169 |

| Missed APCH climb gradient requirement | OBSTACLE CLEARANCE ALTITUDE (HEIGHT) ¹⁾ | | VIS m |
|--|--|--------------------|---|
| | STRAIGHT-IN APPROACH | | |
| | A ^{2) 3)} | B ^{2) 3)} | |
| 2.5% | 4190 (3275) | | For visibility refer to respective circling chart |
| 5.0% | 3380 (2465) | | |
| 6.2% | 3100 (2185) | | |
| 8.3% | 2600 (1685) | | |

CAUTION
On 4.4° APCH angle and GS > 110kt resulting ROD will be >1000ft/min.

NOTE
¹⁾ Circling according specific APCH chart.
²⁾ Higher CAT of ACFT may use the same PROC if they comply with the following speed limitations: Initial APCH 180kt; Final APCH 130kt; Circling 135kt; Holding 170kt; Initial missed APCH 130kt; Final missed APCH 150kt.
³⁾ Published OCA/H and VIS only applicable when airport qualification recency requirements according AIP LSZA AD 2.22 are met.

COR: FREQ 122.550 withdrawn (WEF 30JAN2020)

THIS PAGE INTENTIONALLY LEFT BLANK