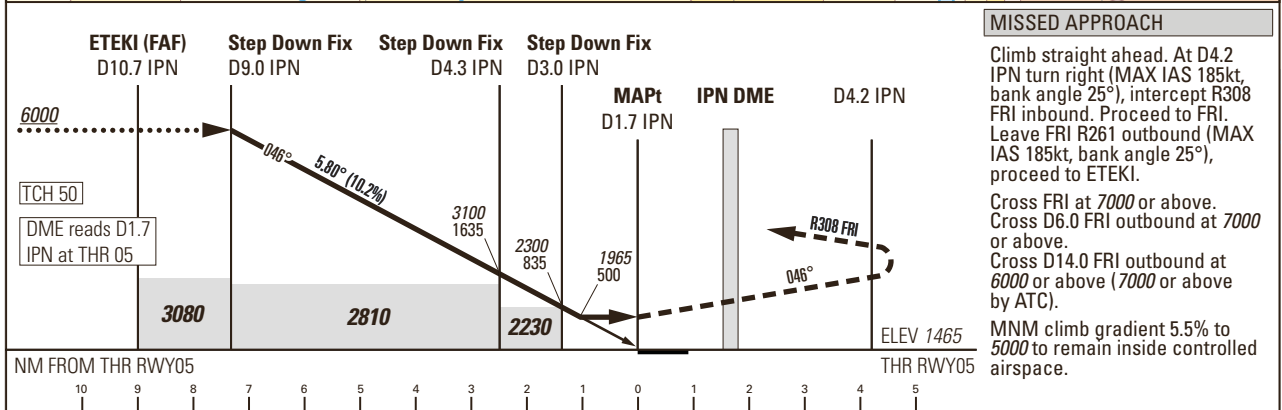
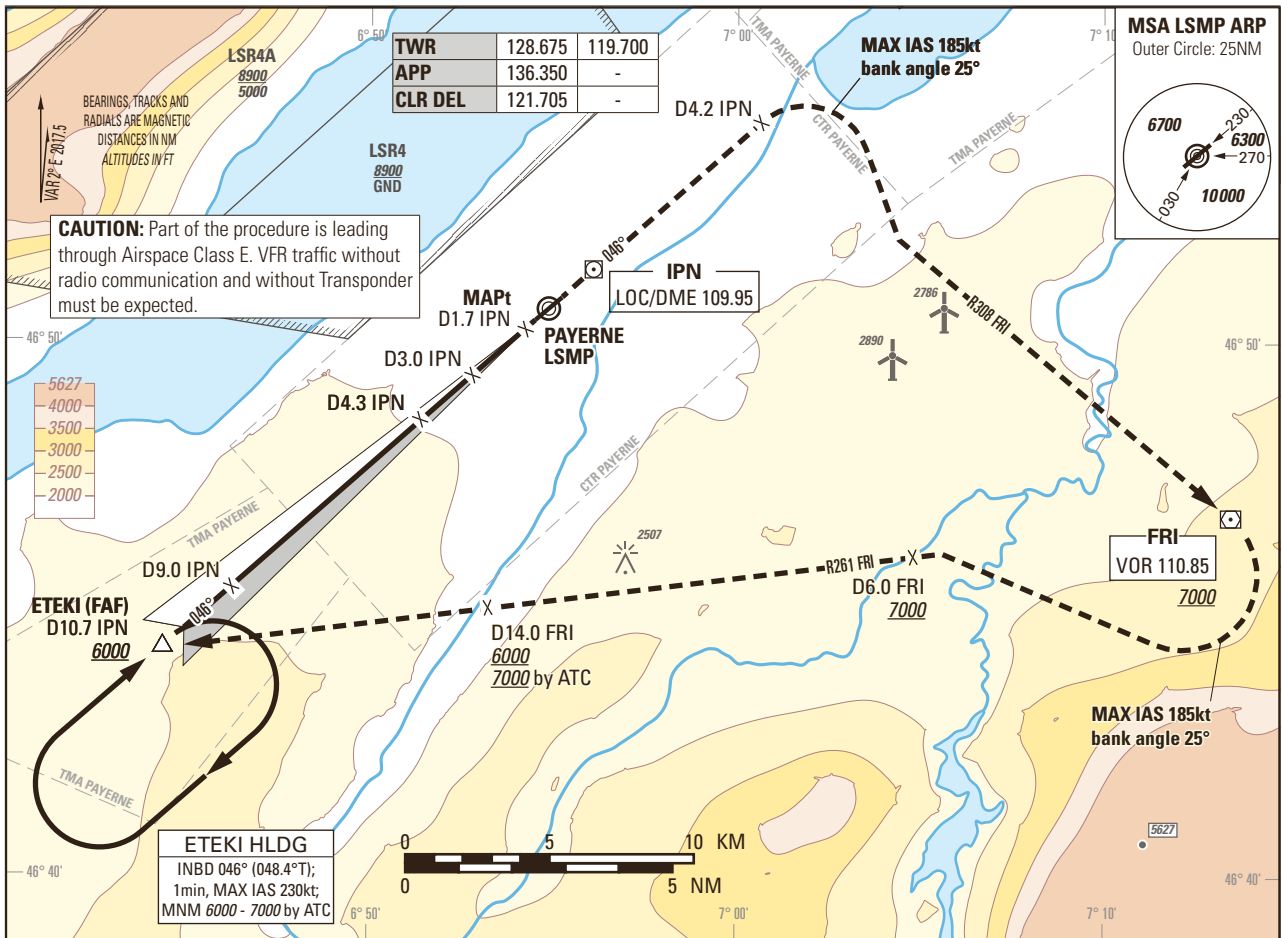


Instrument Approach Chart
(IAC) - ICAO

AD ELEV 1465ft

TRANSITION LEVEL by ATC
TRANSITION ALTITUDE 6000

PAYERNE LSMP
LOC RWY 05 (STEEP APCH 5.80°)
ACFT CAT A/B/C/D



Missed APCH climb gradient requirement	STRAIGHT-IN APPROACH			
	A	B	C	D
	OBSTACLE CLEARANCE ALTITUDE (HEIGHT)			
2.5%	2650 (1185)			
3.2% to 5200	1940 (475)			
	MINIMUM DESCENT ALTITUDE (HEIGHT)			
3.2% to 5200	1965 (500)			
CIRCLING ¹⁾	A	B	C	D
OCA(H)	2120 (655)	2460 (995)	2790 (1325)	2830 (1365)

IPN DME	9	7	5	3	
	recommended CROSSING ALT	6000	4770	3530	2300
ROD	GS kt	90	110	130	150
	FT/MIN	926	1132	1337	1543

NOTE
¹⁾ Circling north of RWY only. Circling must remain inside CTR at all time. Remain SE of Lake Neuchatel. MAX distance parallel of RWY for all ACFT Cat: 2NM.

CAUTION
 - MAX GS 115kt in final approach to avoid ROD > 1000ft/min.
 - Non-standard approach angle.

REMARK
 - OBST limitation and restriction according to non-instrument RWY criteria.

COR: Circling OCA(H) CAT A/B (WEF 18APR2024)

THIS PAGE INTENTIONALLY LEFT BLANK