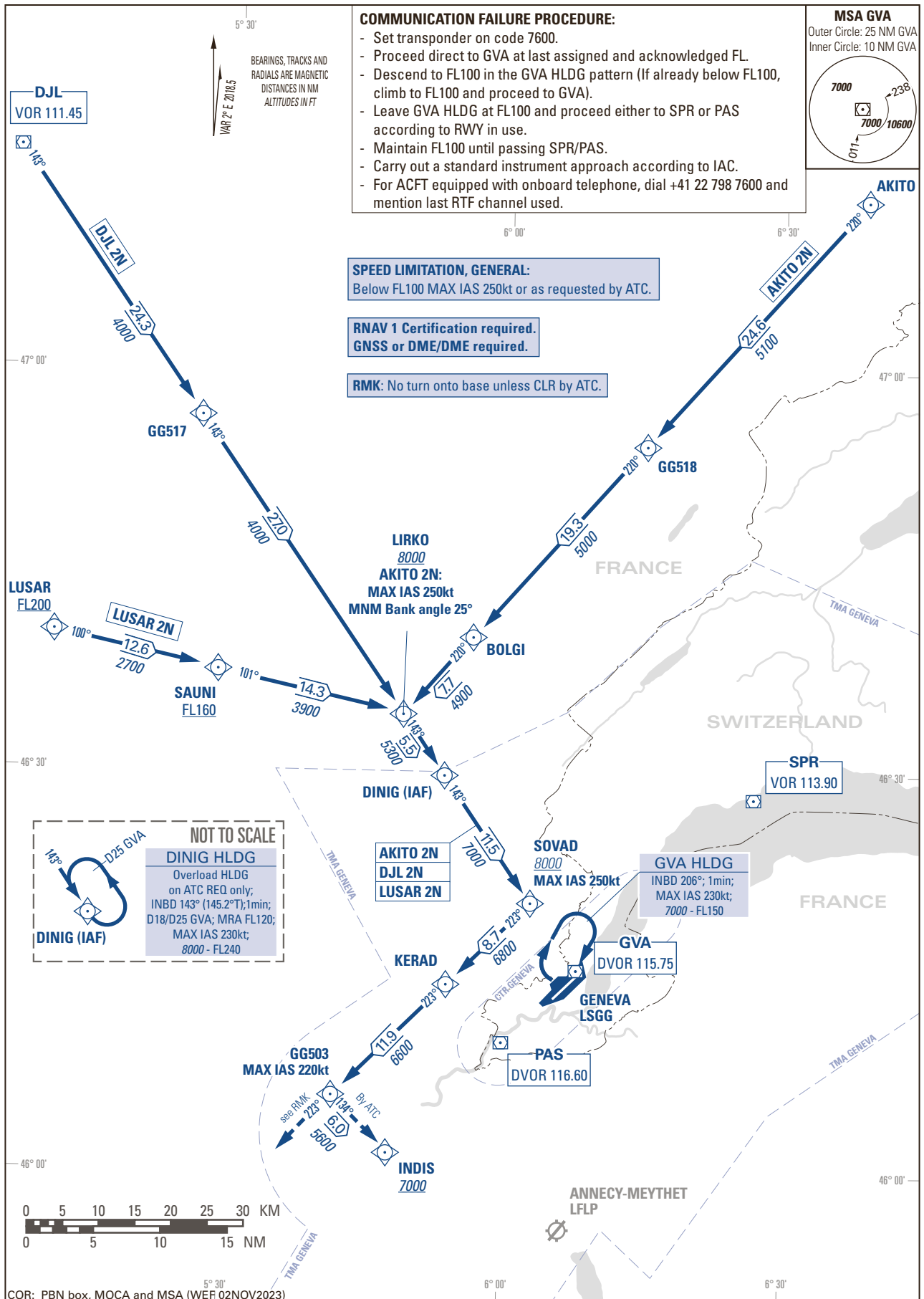


STANDARD INSTRUMENT ARRIVAL CHART
(STAR) - ICAO

TRANSITION LEVEL by ATC
TRANSITION ALTITUDE 7000

GENEVA LSGG
STAR RWY 04 - RNAV
LUSAR - DJL - AKITO



THIS PAGE INTENTIONALLY LEFT BLANK