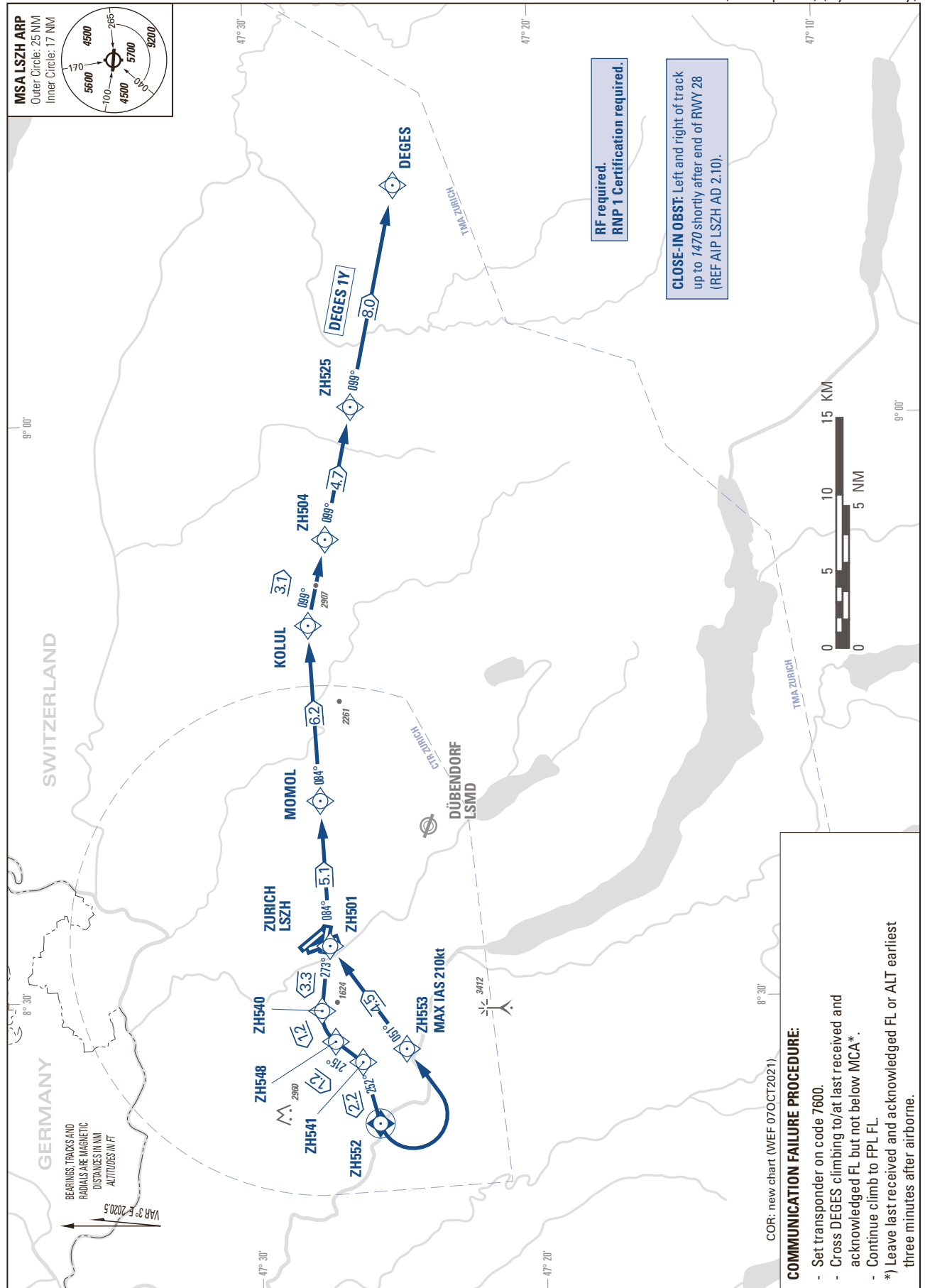


STANDARD INSTRUMENT DEPARTURE CHART  
(SID) - ICAO

TRANSITION LEVEL by ATC  
TRANSITION ALTITUDE 7000

ZURICH - LSZH  
SID RWY 28 - RNP 1 (DEGES)  
(RF required) (by ATC only)



THIS PAGE INTENTIONALLY LEFT BLANK