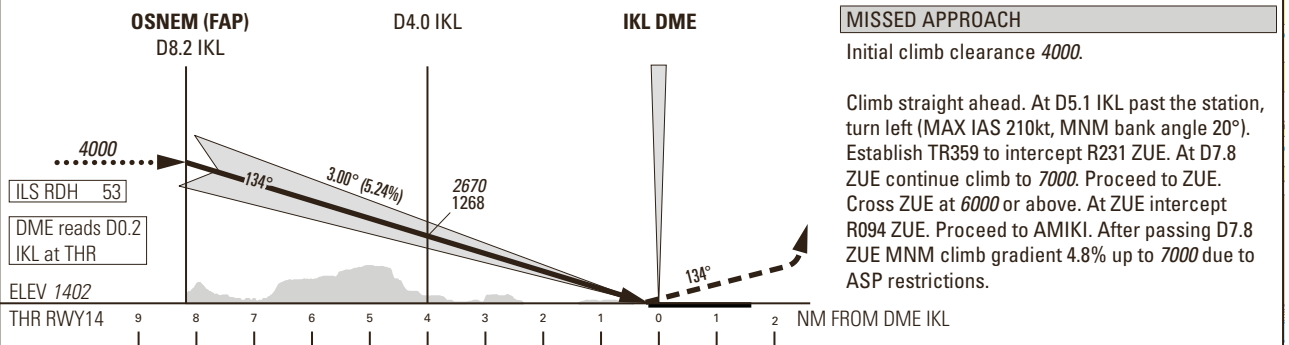
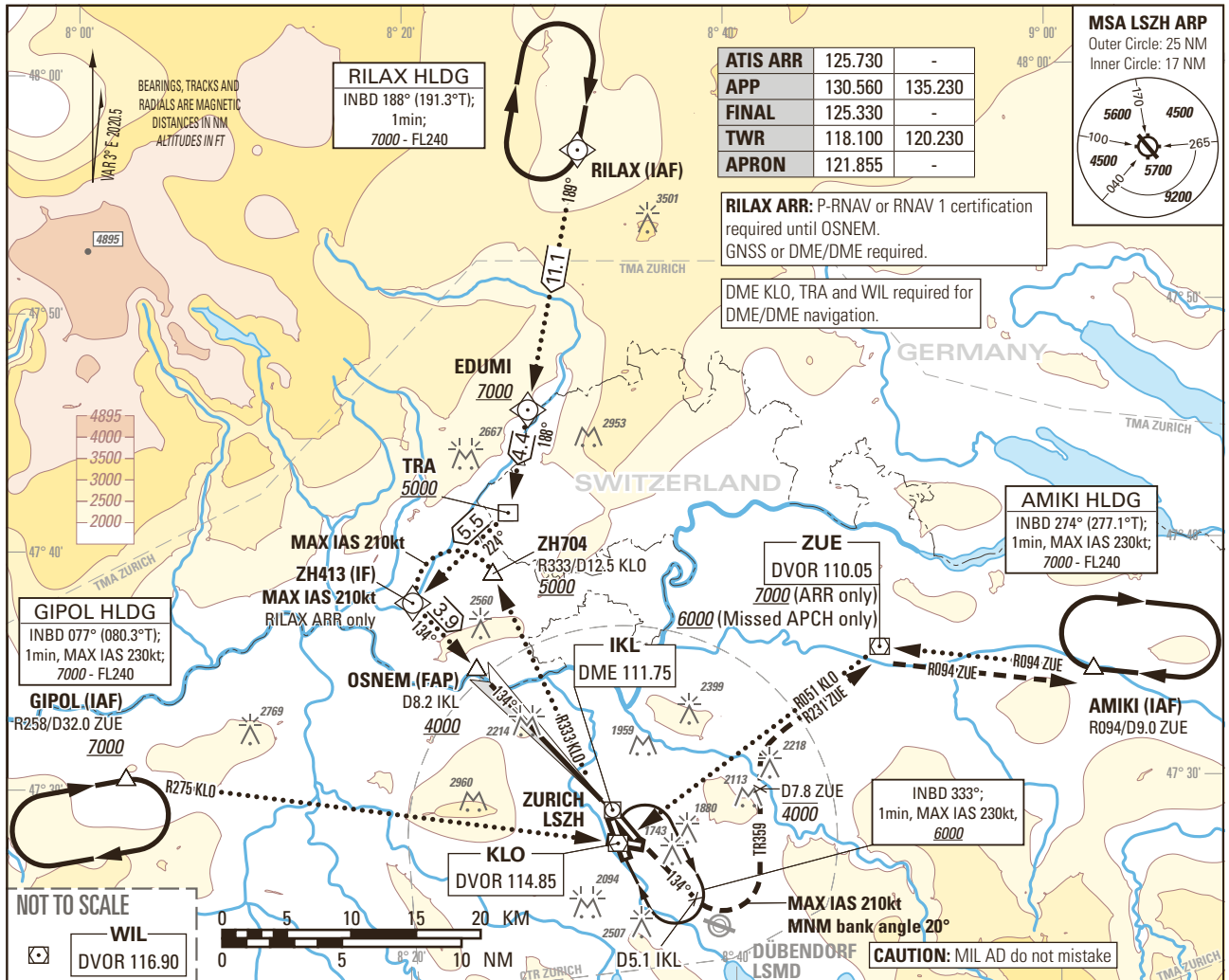


Instrument Approach Chart
(IAC) - ICAO

AD ELEV 1417ft

TRANSITION LEVEL by ATC
TRANSITION ALTITUDE 7000

ZURICH LSZH
ILS RWY 14
CAT II & III



OBSTACLE CLEARANCE ALTITUDE (HEIGHT)						
STRAIGHT-IN APPROACH						
	A	B	C	D	D _L	
CAT I	pressure altimeter	1553 (151)	1562 (160)	1573 (171)	1586 (184)	1593 (191)
CAT II	radio altimeter	1454 (52)	1465 (63)	1477 (75)	1492 (90)	1502 (100)
	radio altimeter and autopilot	1452 (50)	1463 (61)	1477 (75)	1491 (89)	1499 (97)
DECISION ALTITUDE (HEIGHT) ¹⁾						
CAT I	pressure altimeter	1602 (200)				
CAT II	radio altimeter and autopilot	1502 (100)				

ROD	GS kt	90	110	130	150
	FT/MIN	478	584	690	796

NOTE
¹⁾ Radio altimeter reading at CAT I DH 187ft, at CAT II DH 95ft, for lower minima PPR FOCA.

COR: WIL VOR renewed to DVOR (WEF 15JUN2023)

THIS PAGE INTENTIONALLY LEFT BLANK