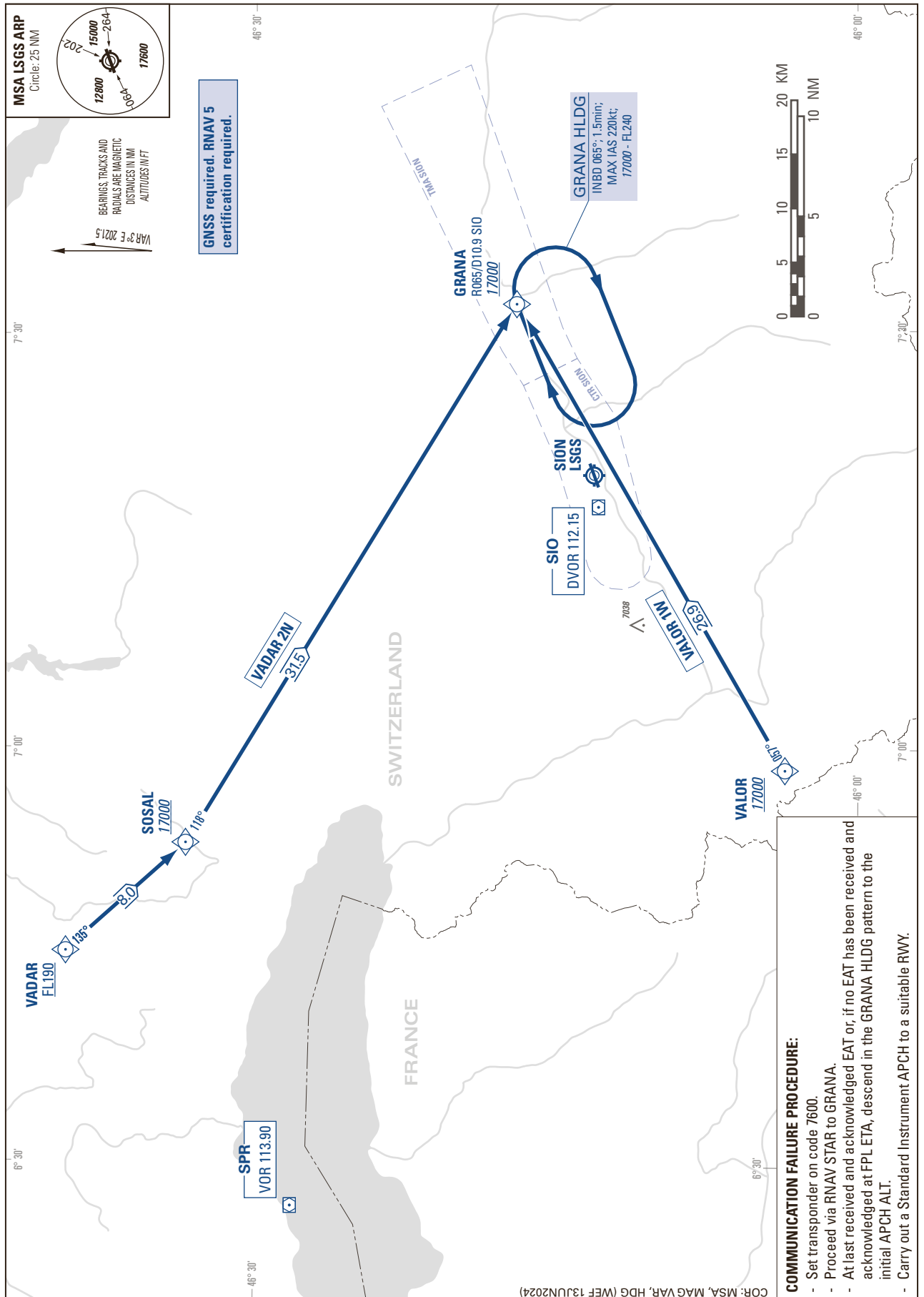


STANDARD INSTRUMENT ARRIVAL CHART
(STAR) - ICAO

TRANSITION LEVEL by ATC
TRANSITION ALTITUDE 17000

SION LSGS
STAR TO GRANA - RNAV 5
(DME/DME or GNSS)



THIS PAGE INTENTIONALLY LEFT BLANK