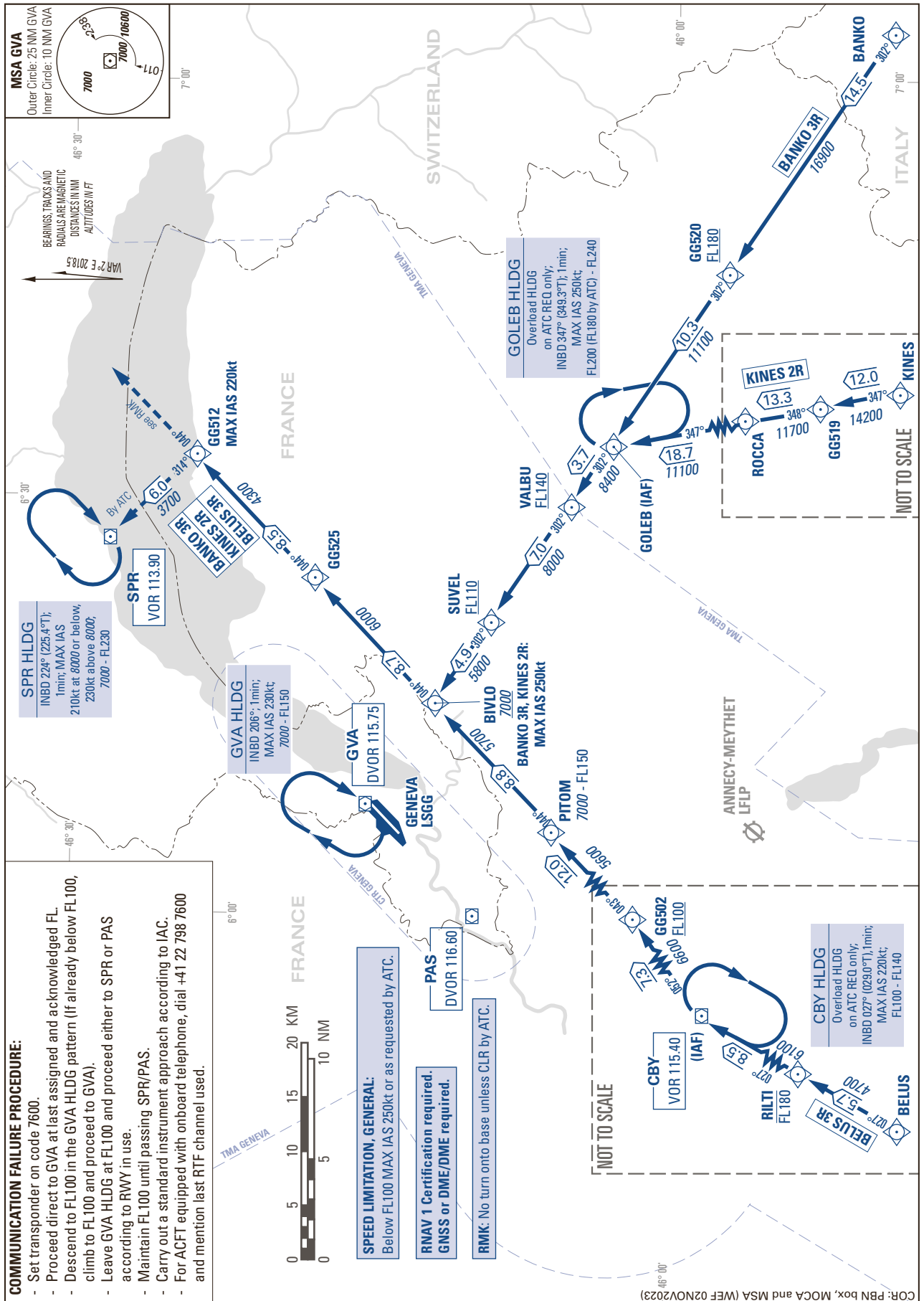


STANDARD INSTRUMENT ARRIVAL CHART  
(STAR) - ICAO

TRANSITION LEVEL by ATC  
TRANSITION ALTITUDE 7000

GENEVA LSGG  
STAR RWY 22 - RNAV  
BELUS - KINES - BANKO



THIS PAGE INTENTIONALLY LEFT BLANK