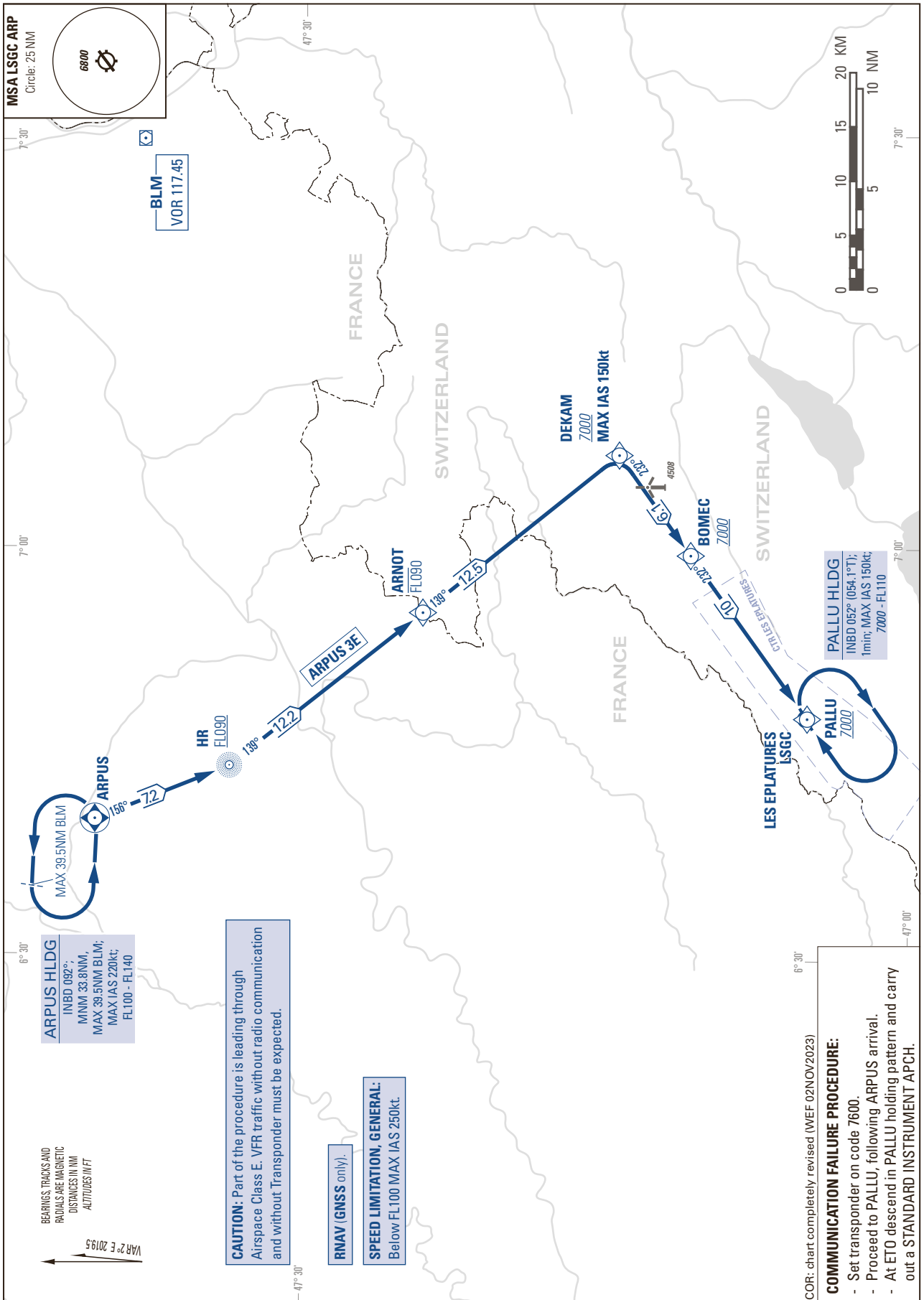


STANDARD INSTRUMENT ARRIVAL CHART  
(STAR) - ICAO

TRANSITION LEVEL by ATC  
TRANSITION ALTITUDE 7000

LES EPLATURES LSGC  
STAR ARPUS to PALLU - RNAV



THIS PAGE INTENTIONALLY LEFT BLANK