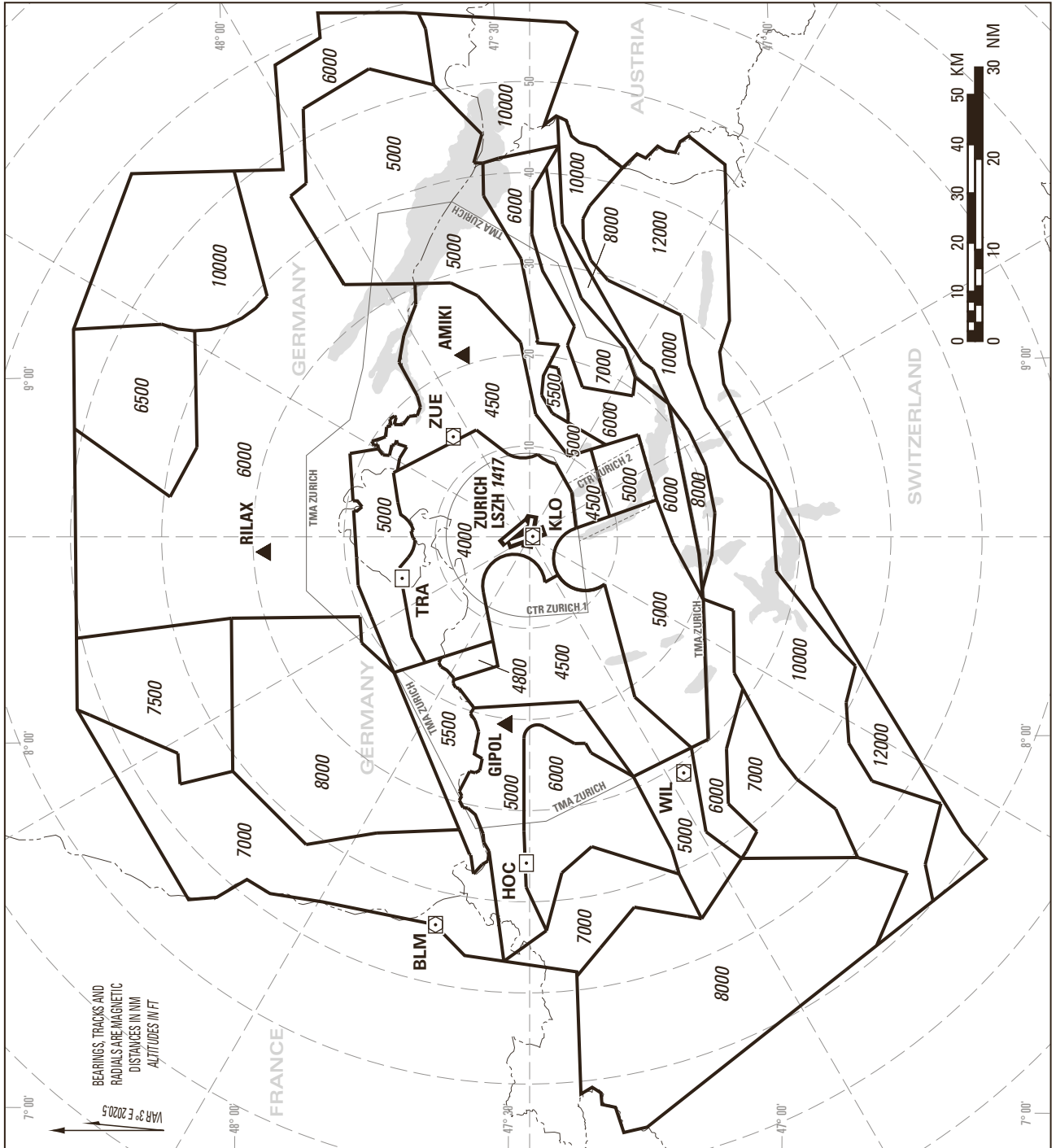


ATC SURVEILLANCE MINIMUM ALTITUDE CHART



NOTES:

The ATC surveillance minimum altitude chart shows the lowest altitude for the approach / departure sectors of LSZH which may be assigned to an IFR flight under radar vectoring.

The chart may only be used for cross-checking of altitudes assigned while under radar vectoring.

Altitudes: LSZH QNH.

Transition ALT: 7000

Minimum altitudes over Swiss territory are calculated in accordance with ICAO SARPS (PANS-ATM Doc 4444 & PANS-OPS Doc 8168).

Minimum altitudes over Swiss territory are protected for low temperatures from minus 20 degrees to minus 7 degrees celsius (LSZH temperature).

Sectors indicated all 30°, distances indicated all 10 NM, based on KLO DVOR/DME.

COR: LSZHTMA 8 (WEP 24MAR2022)

THIS PAGE INTENTIONALLY LEFT BLANK