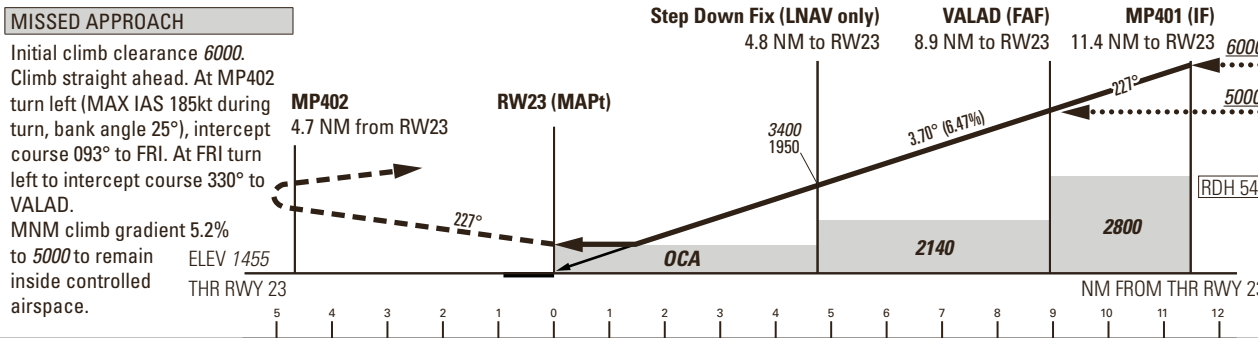
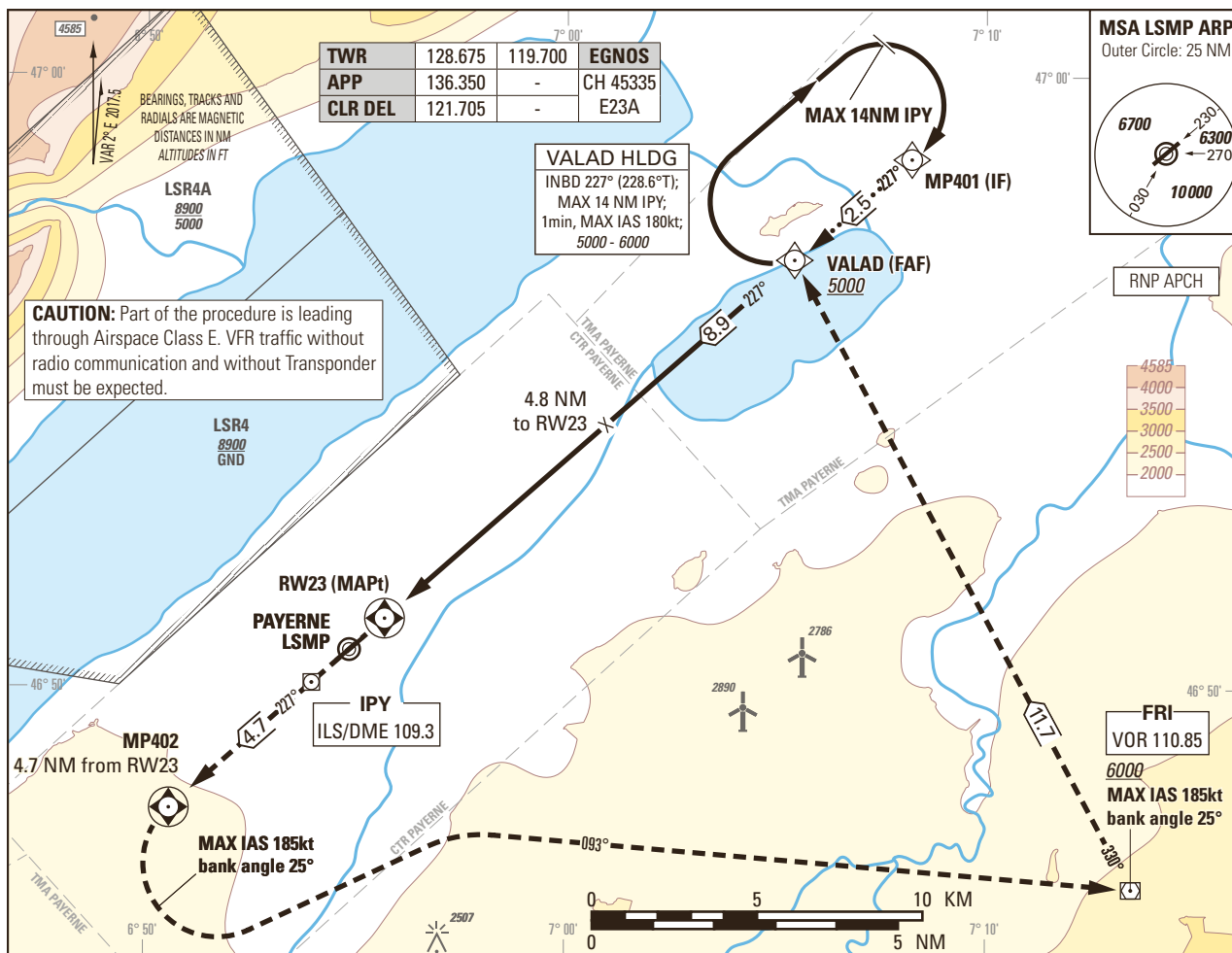


Instrument Approach Chart  
(IAC) - ICAO

AD ELEV 1465ft

TRANSITION LEVEL by ATC  
TRANSITION ALTITUDE 6000

PAYERNE LSMP  
RNP Z RWY 23  
ACFT CAT A/B/C/D



Missed APCH climb gradient requirement	STRAIGHT-IN APPROACH			
	A	B	C	D
	OBSTACLE CLEARANCE ALTITUDE(HEIGHT) LNAV			
2.5%	2190 (735)			
3.4% to 2700	2020 (565)			
	OBSTACLE CLEARANCE ALTITUDE(HEIGHT) LPV(CAT-I)			
2.5%	2051 (596)	2064 (609)	2077 (622)	2090 (635)
5.0%	1727 (272)	1740 (285)	1753 (298)	1767 (312)
	DECISION ALTITUDE(HEIGHT) LPV			
5.0%	1955 (500)			
CIRCLING <sup>1)</sup>	A	B	C	D
OCA(H)	2120 (655)	2460 (995)	2790 (1325)	2830 (1365)

RWY 23 DIST	1	2	3	4	5	6	7	8	8.9	11.4
recommended CROSSING ALT	1900	2300	2690	3080	3470	3870	4260	4650	5000	6000
recommended CROSSING HGT	445	845	1235	1625	2025	2415	2805	3205	3545	4545

ROD	GS kt	90	110	130	150
	FT/MIN	590	720	850	980

**NOTE**  
<sup>1)</sup> Circling north of RWY only. Circling must remain inside CTR at all time. Remain SE of Lake Neuchatel. MAX distance parallel of RWY for all ACFT Cat: 2 NM.

**CAUTION**  
- MAX GS 150kt in final approach to avoid ROD > 1000ft/min.  
- Non-standard approach angle.

**REMARK**  
- OBST limitation and restriction according to non-instrument RWY criteria.

COR: Circling OCA(H) CAT A/B (WEF 18APR2024)

Input data

Operation Type	0
SBAS Provider	1
Airport Identifier	LSMP
Runway	23
Runway Direction	0
Approach Performance Designator	0
Route Indicator	Z
Reference Path Data Selector	0
Reference Path Identifier	E23A
LTP/FTP Latitude	465103.1090N
LTP/FTP Longitude	0065539.0095E
LTP/FTP Ellipsoidal Height (metres)	492.8
FPAP Latitude	465006.4530N
Delta FPAP Latitude (seconds)	-56.6560
FPAP Longitude	0065405.6285E
Delta FPAP Longitude (seconds)	-93.3810
Threshold Crossing Height	16.45
TCH Units Selector	1
Glidepath Angle (degrees)	3.70
Course Width (metres)	105.00
Length Offset (metres)	0
HAL (metres)	40.0
VAL (metres)	35.0

Output data

Data Block	10 10 0D 13 0C 17 D0 00 01 33 32 05 8A 30 1B 14 03 14 F9 02 40 27 60 45 FE 76 26 FD 49 81 72 01 64 00 C8 AF 1D D9 4E 69
Calculated CRC Value	1DD94E69

Required Additional Data

ICAO Code	LS
LTP/FTP Orthometric Height (metres)	443.5
FPAP Orthometric Height (metres)	446.6