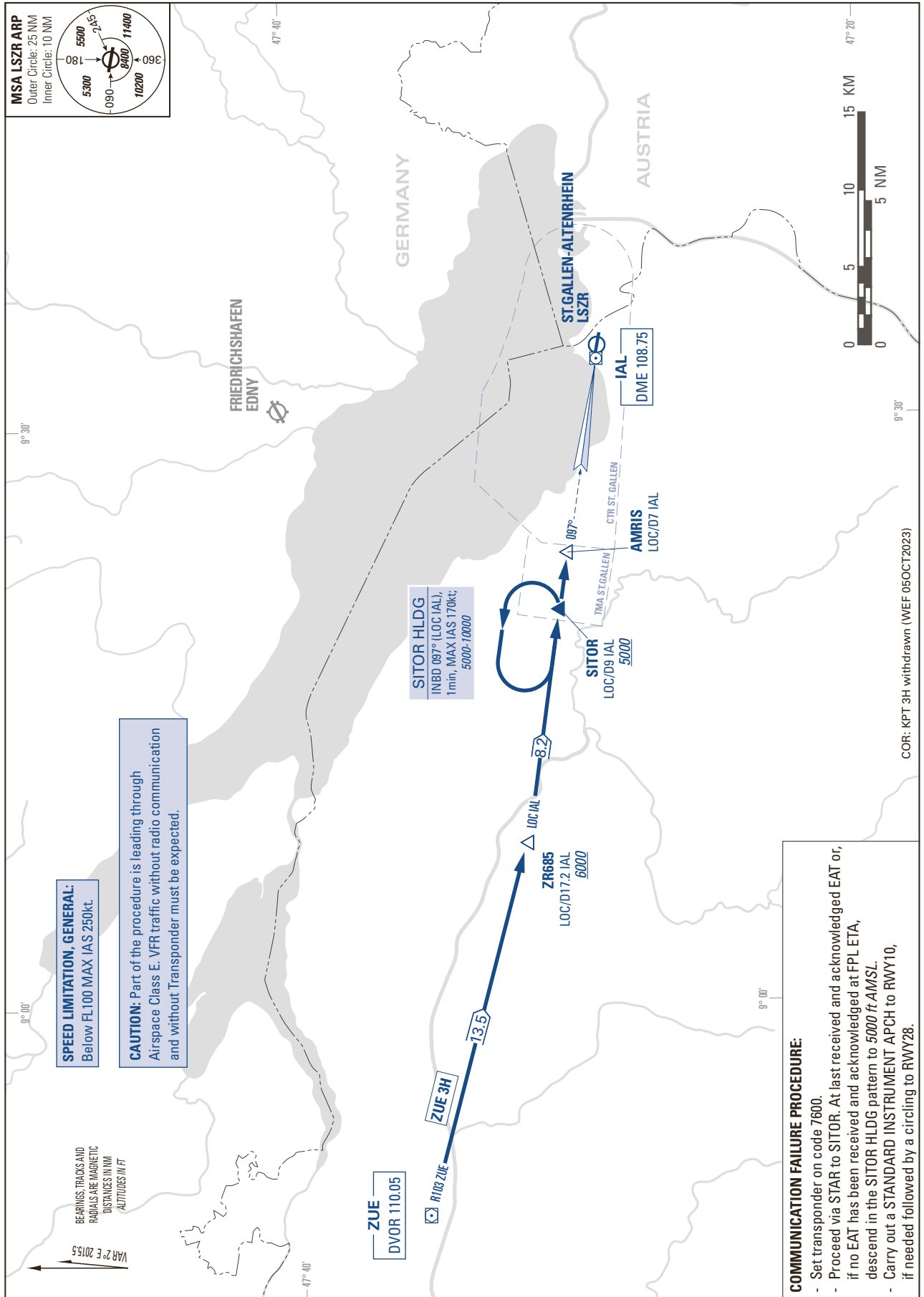


STANDARD INSTRUMENT ARRIVAL CHART
(STAR) - ICAO

TRANSITION LEVEL by ATC
TRANSITION ALTITUDE 5000

ST. GALLEN-ALTENRHEIN LSZR
STAR to SITOR - NON RNAV



THIS PAGE INTENTIONALLY LEFT BLANK