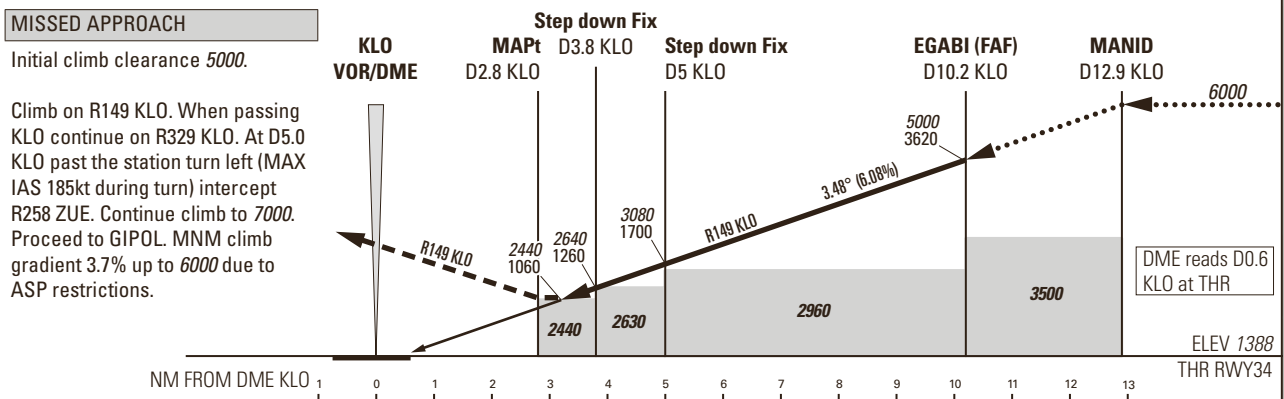
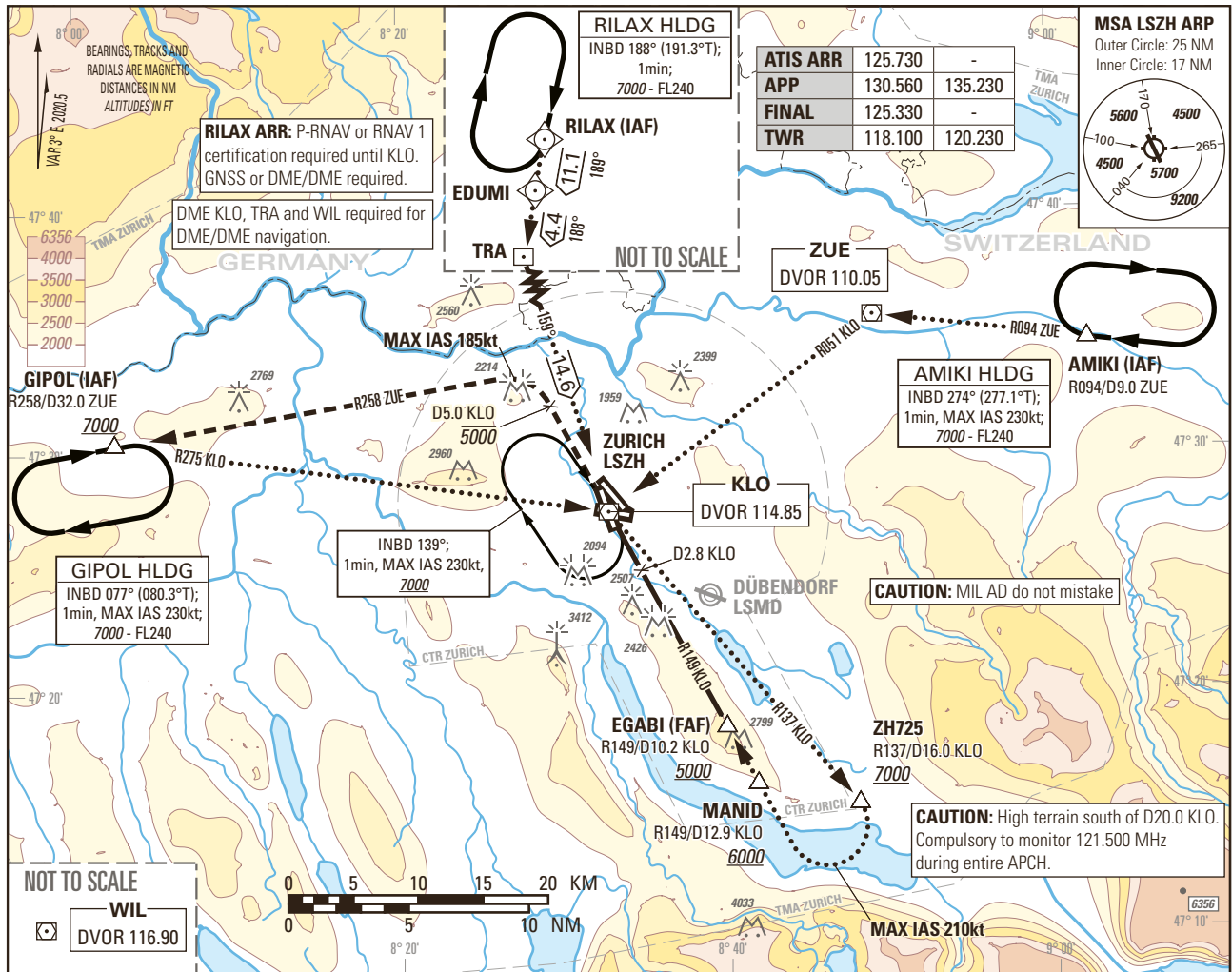


Instrument Approach Chart
(IAC) - ICAO

AD ELEV 1417ft

TRANSITION LEVEL by ATC
TRANSITION ALTITUDE 7000

ZURICH LSZH
VOR RWY 34



OBSTACLE CLEARANCE ALTITUDE (HEIGHT)	A	B	C	D
STRAIGHT-IN APPROACH	2440 (1060)			

ROD	GS kt	90	110	130	150
	FT/MIN	554	677	801	924

DME KLO	4	5	6	7	8	9	10	11	12
RECOMMENDED CROSSING ALTITUDE (HEIGHT)	2710 (1330)	3080 (1700)	3450 (2070)	3820 (2440)	4190 (2810)	4560 (3180)	4930 (3550)	5300 (3920)	5670 (4290)

CAUTION
- 0.6NM BFR THR34 visual segment surface (VSS) penetrated by building up to 1530ft AMSL.

COR: WIL VOR renewed to DVOR (WEF 15JUN2023)

THIS PAGE INTENTIONALLY LEFT BLANK