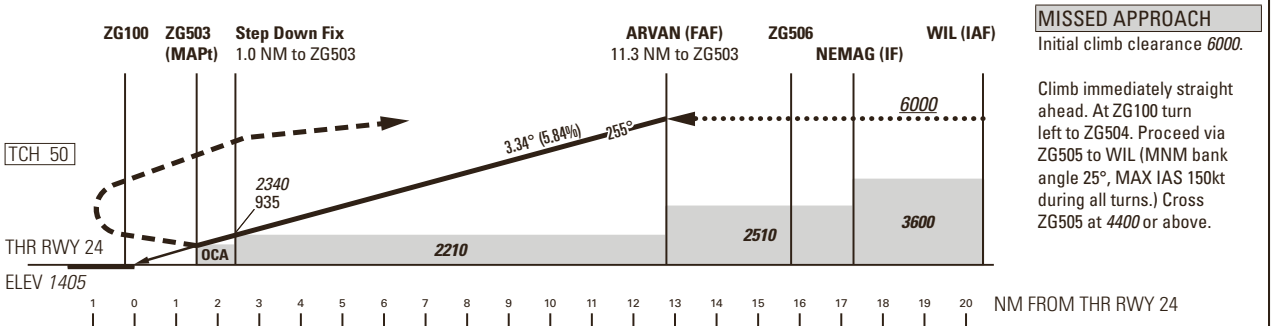
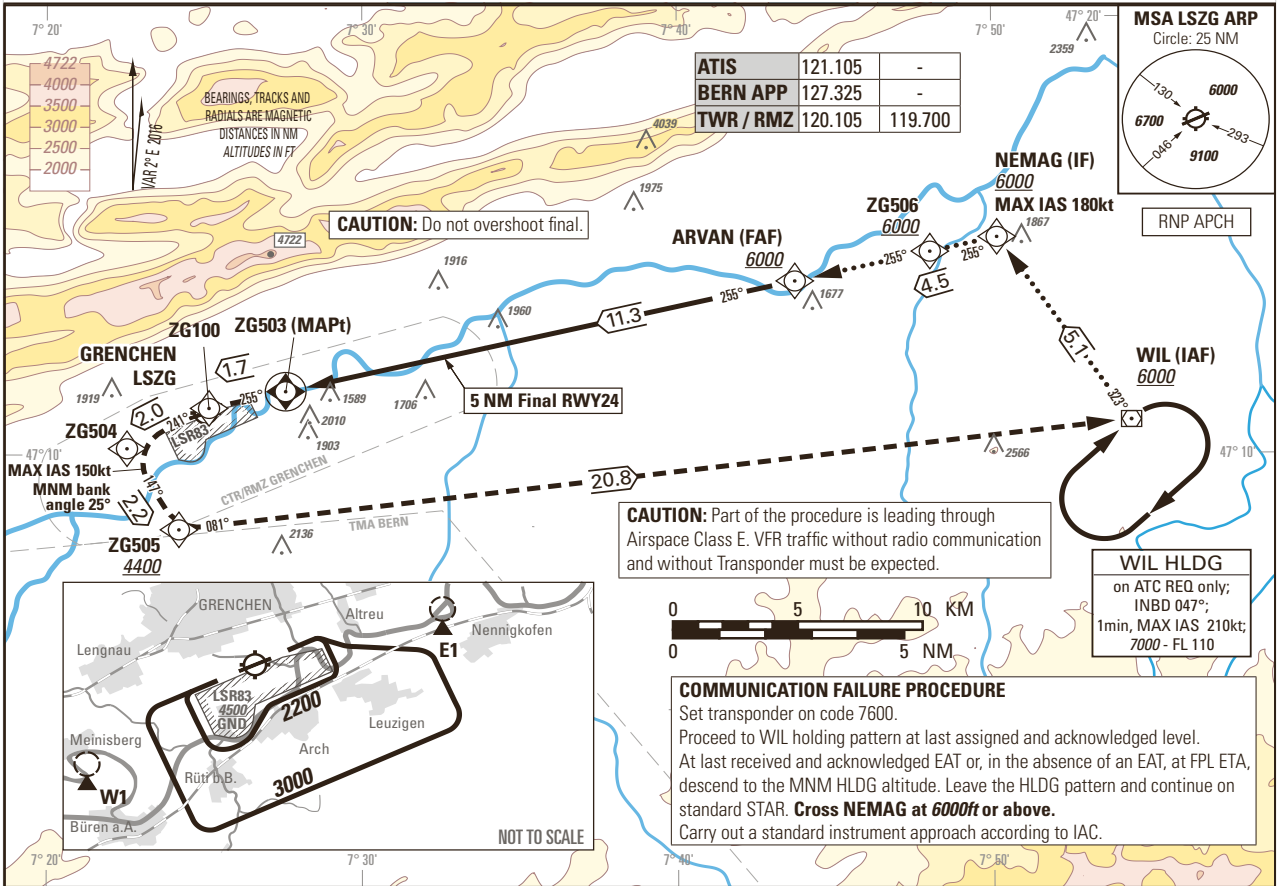


Instrument Approach Chart (IAC) - ICAO

AD ELEV 1411ft

TRANSITION LEVEL by ATC
TRANSITION ALTITUDE 6000

GRENCHEN LSZG
RNP RWY 24
11.5° OFFSET LEFT
ACFT CAT A / B



Missed APCH climb gradient requirement	STRAIGHT-IN APPROACH ¹⁾	
	A	B
	OCA(H) LNAV	
2.5%	2490 (1085)	
6.6%	2010 (605)	
	MDA(H) LNAV	
2.5%	2490 (1085)	
6.6%	2010 (605)	
CIRCLING ^{2) 3)}	A	B
OCA	2270	2320
VIS	1900m	2800m

ROD	GS kt			
	90	110	130	150
	533	651	769	888

DIST ZG503	1	2	3	4	5	6	7	8	9	10	11	11.3
DIST FTP	2.5	3.5	4.5	5.5	6.5	7.5	8.5	9.5	10.5	11.5	12.5	12.8
ALT FT	2350	2700	3060	3410	3760	4120	4470	4830	5180	5540	5890	6000

NOTE

¹⁾ Noise abatement:
- do not turn onto final before reaching 1.2 NM to ZG100.

²⁾ Circling:
- No circlings north of RWY 06/24.
- avoid overflying villages.
- whenever possible, circling ALT 3000ft on outer downwind, circling shall remain inside CTR limits.

CAUTION

- Visual Segment Surface (VSS) penetrated by terrain right of track up to 1560ft AMSL.
- Do not enter LSR83 when active (ATIS).

COR: LSR83 (WEF 21MAR2024)

THIS PAGE INTENTIONALLY LEFT BLANK