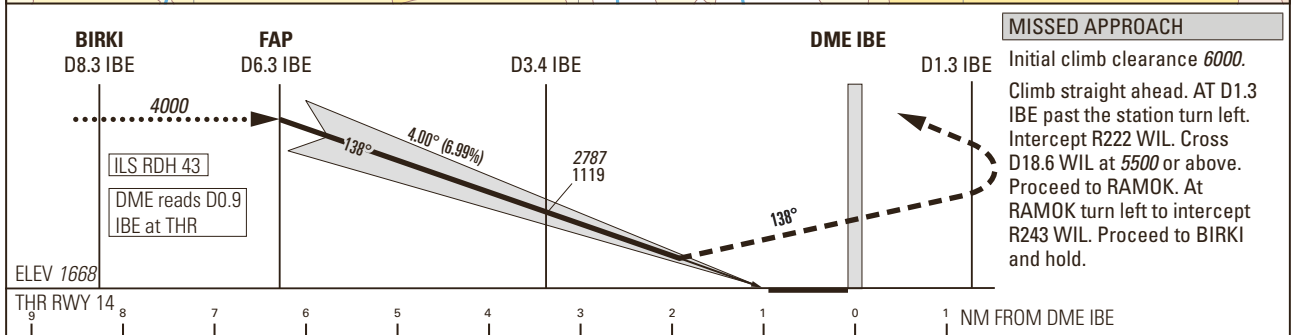
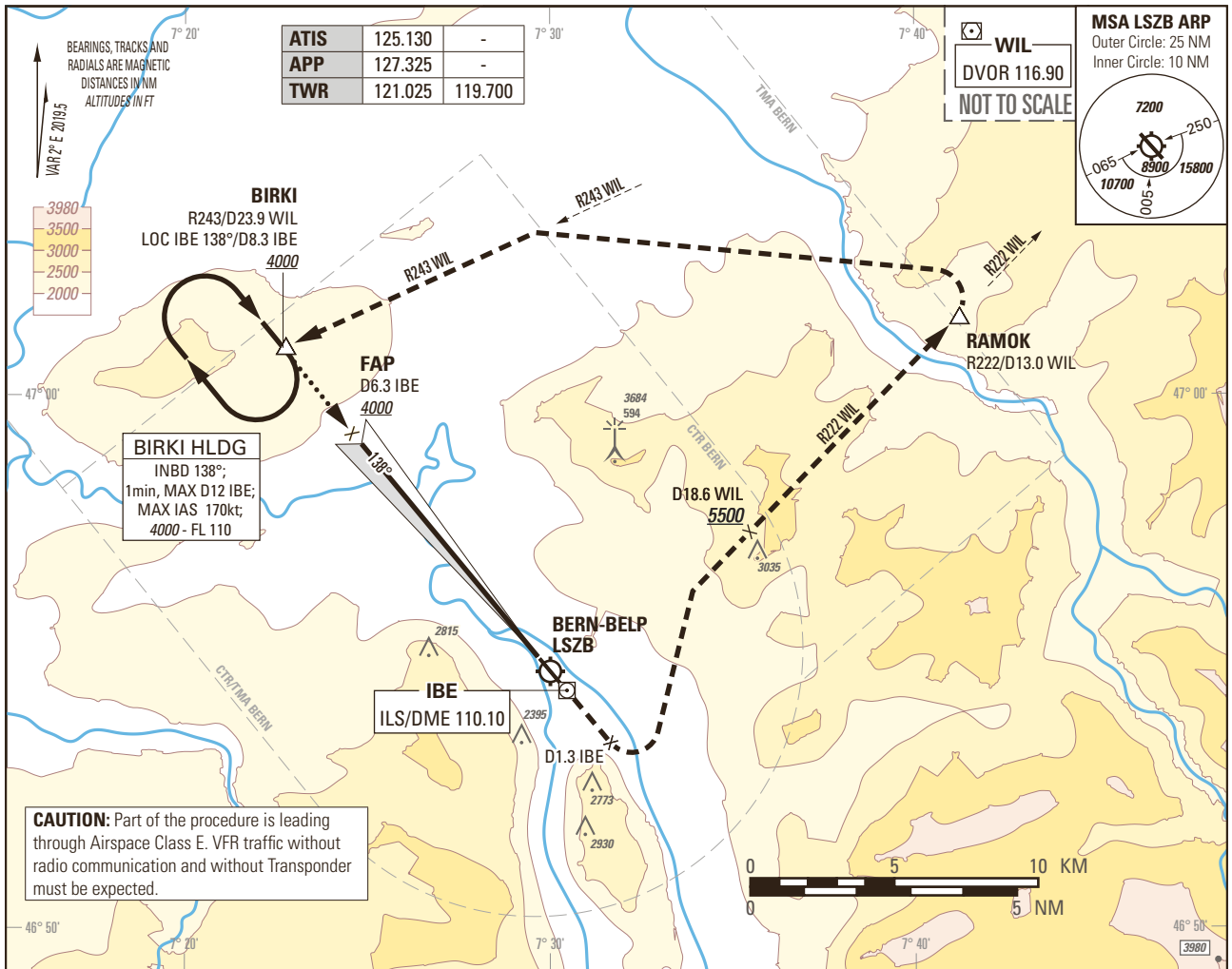


Instrument Approach Chart
(IAC) - ICAO

AD ELEV 1675ft

TRANSITION LEVEL by ATC
TRANSITION ALTITUDE 6000

BERN-BELP LSZB
ILS RWY 14
HELICOPTER CAT H



Missed APCH climb gradient requirement		STRAIGHT-IN APPROACH			
		OBSTACLE CLEARANCE ALTITUDE (HEIGHT)			
		H			
4.2%	pressure altimeter	2334 (666)			
5.0% up to 3100		2229 (561)			
7.0% up to 3100		2075 (407)			
		DECISION ALTITUDE (HEIGHT)			
4.2%	pressure altimeter	2334 (666)			
5.0% up to 3100		2229 (561)			
7.0% up to 3100		2117 (449)			
ROD	GS kt	90	110	130	140
	FT/MIN	637	779	920	991

DME IBE	6.3	6.0	5.0	4.0	3.0	2.0	1.0
DIST THR	5.4	5.1	4.1	3.1	2.1	1.1	0.1
ALT FT	4000	3877	3452	3028	2603	-	-

CAUTION

- MAX GS 140kt in final APCH to avoid ROD >1000ft/min.
- 0.7 NM BFR THR 14 Visual Segment Surface (VSS) penetrated by trees up to 1890ft AMSL.
- This is not a standard APCH angle.

REMARK

- Uncategorised ILS APCH RWY 14 due to OBST limitation and restriction according to non-instrument RWY criteria.
- ILS14 signal fulfills ICAO Annex 10, CAT I specifications.
- Circling according to specific APCH charts.

COR: ALTN TWR FREQ added (WEF 10AUG2023)

THIS PAGE INTENTIONALLY LEFT BLANK