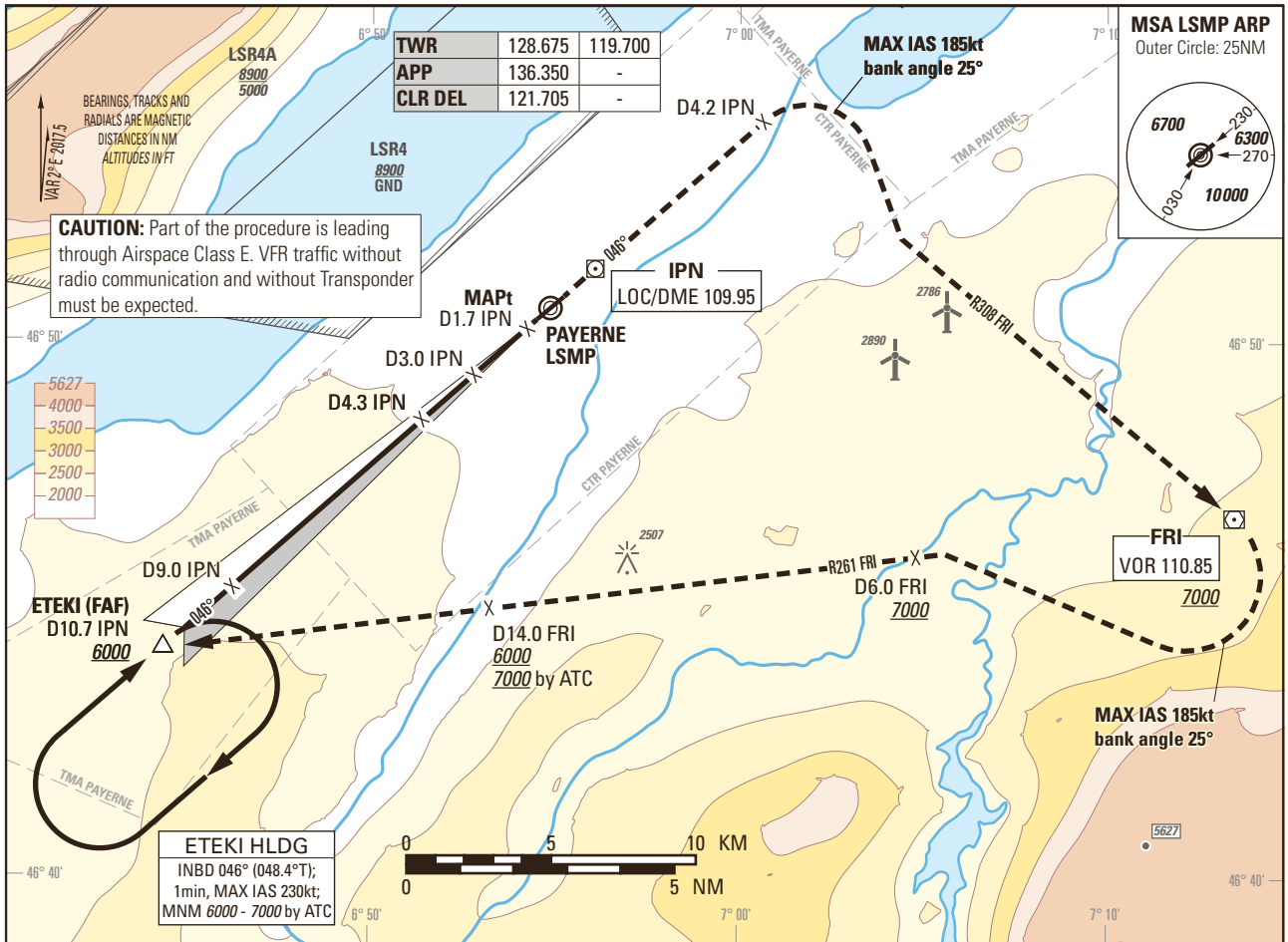


Instrument Approach Chart
(IAC) - ICAO

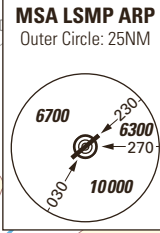
AD ELEV 1465ft

TRANSITION LEVEL by ATC
TRANSITION ALTITUDE 6000

PAYERNE LSMP
LOC RWY 05 (STEEP APCH 5.80°)
ACFT CAT A/B/C/D

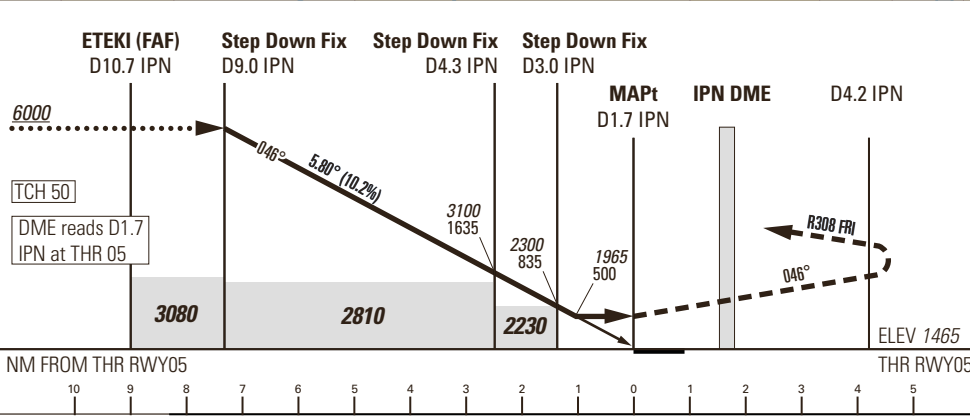


TWR	128.675	119.700
APP	136.350	-
CLR DEL	121.705	-



CAUTION: Part of the procedure is leading through Airspace Class E. VFR traffic without radio communication and without Transponder must be expected.

ETEKI HLDG
INBD 046° (048.4°T);
1min, MAX IAS 230kt;
MNM 6000 - 7000 by ATC



MISSED APPROACH
Climb straight ahead. At D4.2 IPN turn right (MAX IAS 185kt, bank angle 25°), intercept R308 FRI inbound. Proceed to FRI. Leave FRI R261 outbound (MAX IAS 185kt, bank angle 25°), proceed to ETEKI.
Cross FRI at 7000 or above. Cross D6.0 FRI outbound at 7000 or above. Cross D14.0 FRI outbound at 6000 or above (7000 or above by ATC).
MNM climb gradient 5.5% to 5000 to remain inside controlled airspace.

Missed APCH climb gradient requirement	STRAIGHT-IN APPROACH			
	A	B	C	D
	OBSTACLE CLEARANCE ALTITUDE (HEIGHT)			
2.5%	2650 (1185)			
3.2% to 5200	1940 (475)			
	MINIMUM DESCENT ALTITUDE (HEIGHT)			
3.2% to 5200	1965 (500)			
CIRCLING ¹⁾	A	B	C	D
OCA(H)	2110 (645)	2450 (985)	2790 (1325)	2830 (1365)

IPN DME recommended CROSSING ALT	9	7	5	3
	6000	4770	3530	2300

ROD	GS kt	90	110	130	150
	FT/MIN	926	1132	1337	1543

NOTE
¹⁾ Circling north of RWY only. Circling must remain inside CTR at all time. Remain SE of Lake Neuchatel. MAX distance parallel of RWY for all ACFT Cat: 2NM.

CAUTION
- MAX GS 115kt in final approach to avoid ROD > 1000ft/min.
- Non-standard approach angle.

REMARK
- OBST limitation and restriction according to non-instrument RWY criteria.

COR: LSR naming convention (WEF 21MAR2024)

THIS PAGE INTENTIONALLY LEFT BLANK