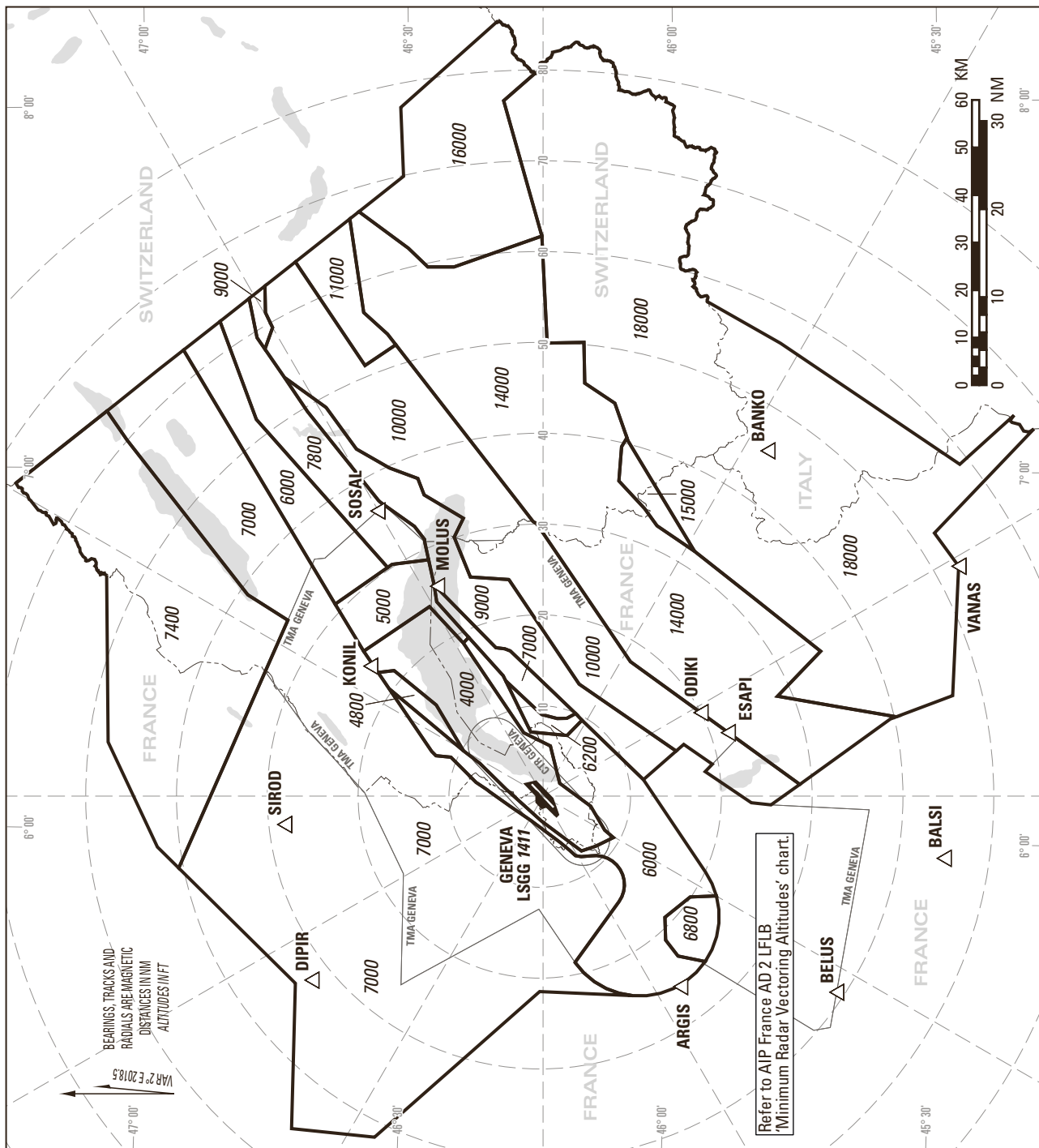


ATC SURVEILLANCE MINIMUM ALTITUDE CHART (AD TEMPERATURES FROM 2°C AND ABOVE)



**NOTES:**

The ATC surveillance minimum altitude chart shows the lowest altitude for the approach / departure sectors of LSGG and provides for terrain / obstacle clearance as well as radio and radar coverage.

The chart may only be used for cross-checking of altitudes assigned while under radar vectoring.

Altitudes: LSGG QNH.  
Altitudes do NOT consider airspace classification.

Transition ALT: 7000

Minimum altitudes are calculated in accordance with ICAO SARPS (PANS-ATM Doc 4444 & PANS-OPS Doc 8168).

Minimum altitudes up to Transition ALT 7000 are protected for low temperatures to 2 degrees Celsius (LSGG temperature).

Assigned altitudes above 7000 under radar vectoring are protected for low temperatures by ATC.

Sectors indicated all 30°, distances indicated all 10 NM, based on LSGG ARP.

COR: new chart (WEF 03NOV2022)

THIS PAGE INTENTIONALLY LEFT BLANK