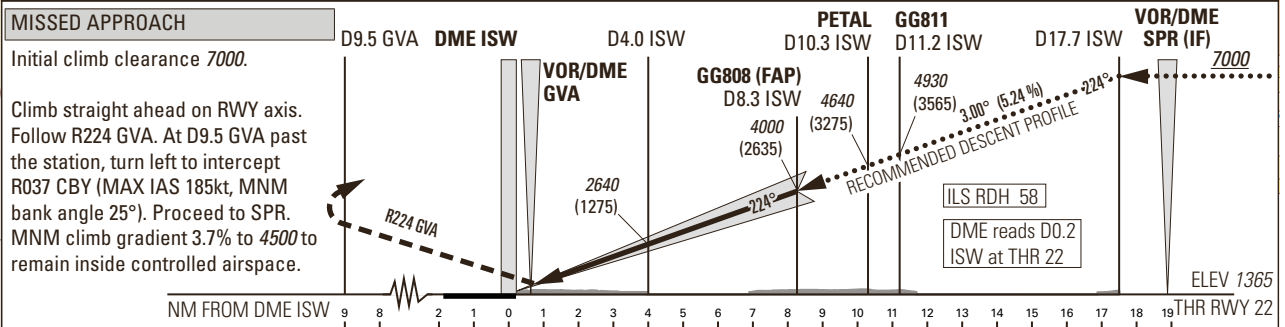
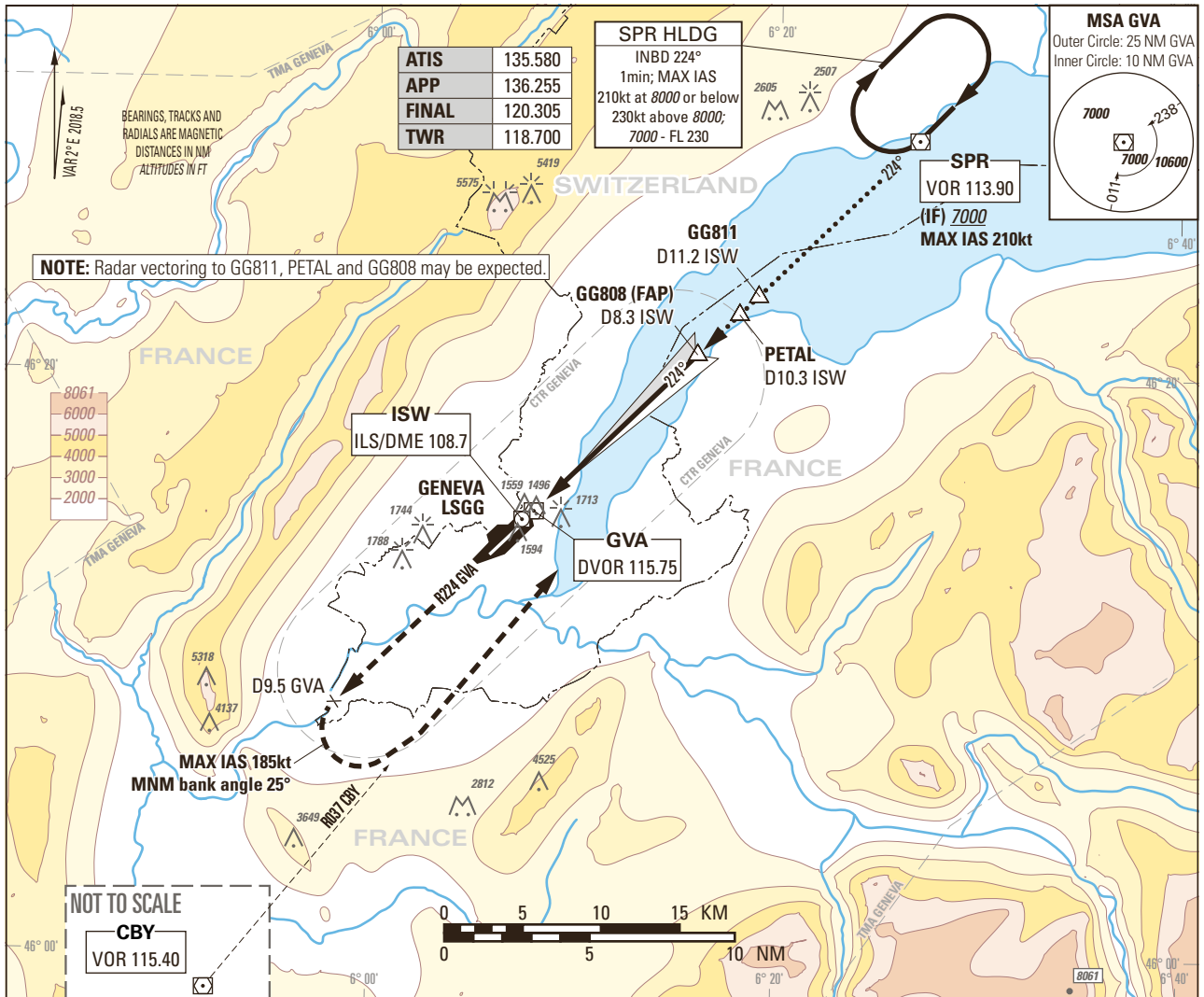


Instrument Approach Chart
(IAC) - ICAO

AD ELEV 1411ft

TRANSITION LEVEL by ATC
TRANSITION ALTITUDE 7000

GENEVA LSGG
ILS RWY 22
CAT II & CAT III



OBSTACLE CLEARANCE ALTITUDE (HEIGHT) ¹⁾				
Missed APCH climb gradient requirement				
CAT	altimeter	A	B	D
CAT I	pressure altimeter	2018 (653)	2026 (661)	2048 (683)
CAT I	pressure altimeter	1530 (165)	1538 (173)	1548 (183)
CAT II	radio altimeter and autopilot	1432 (67)	1438 (73)	1449 (84)
CAT II	radio altimeter and autopilot	1427 (62)	1436 (71)	1447 (82)
DECISION ALTITUDE (HEIGHT) ¹⁾				
CAT	altimeter	A	B	D
CAT I	pressure ²⁾	1565 (200)		
CAT II	radio altimeter and autopilot ²⁾	1465 (100)		
Circling ³⁾⁴⁾		2100 (689)	2150 (739)	2400 (989)

DIST DME ISW	2	4	6	8	8.3	10	12	14	16	
recommended	2000	2640	3280	3910	4000	4550	5190	5820	6460	
CROSSING ALT	ROD		GS kt	90	110	130	150			
			FT/MIN	478	584	690	796			

NOTE

¹⁾ Above THR elevation 1365ft.
²⁾ Radio altimeter reading at CAT I DH 216ft, at CAT II DH 108ft, for lower operating minima (DH and RVR) PPR FOCA.
³⁾ Above aerodrome ELEV 1411ft, circling on request of ATC under special conditions and north of RWY only, speed (MAX IAS 180kt) and radius for category D as for category C aircraft.
⁴⁾ Circling must remain inside CTR at all times.

COR: MSA, RDL CBY, Circling minima (WEF 02NOV2023)

THIS PAGE INTENTIONALLY LEFT BLANK