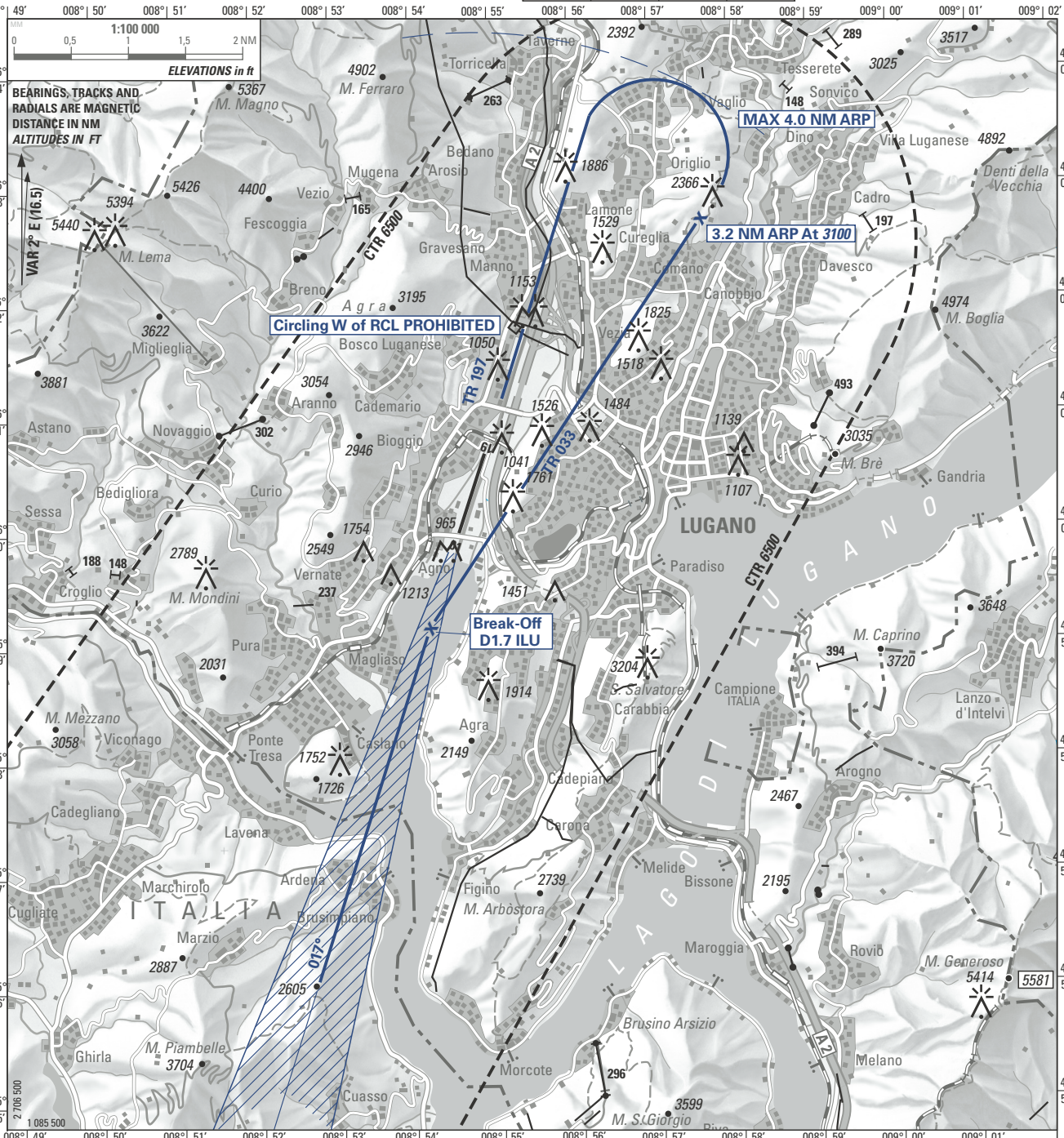


LUGANO
 DAY ONLY
 CIRCLING FOXTROT
 RWY 19

ATIS	121.175		
TWR	120.250	119.700	121.500
CLR DEL	121.780		

CIRCLING
 APPROACH
 CHART
 ELEV 915 ft (279 m)



WARNING: Disregard PAPI RWY 01 information.
 Use PAPI RWY 19 information only within 2 NM from THR

Descent to be arranged to maintain clean configuration as long as possible, safety and ATC requirement considered.

OBST ELEV: ft / HGT: ft

OCA/H CIRCLING	VIS m	CEILING REQUIRED
A & B		
3100 (2185)	Day only 5000	3100 ft AAL
3500 (2585) if ceiling and VIS permit		or higher

CIRCLING PROCEDURE

If visual contact is established at D2.2 ILU, continue straight ahead. At D1.7 ILU turn right on track 033°, if ceiling and visibility permit maintain 3500 ft for noise abatement purposes (3100 ft procedure MNM) until 3.2 NM ARP.

At 3.2 NM ARP start left turn onto base.

COR: OBST, editorial (WEF 13JUL2023)

© swisstopo

THIS PAGE INTENTIONALLY LEFT BLANK