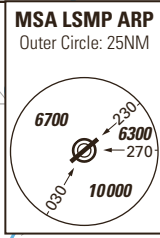
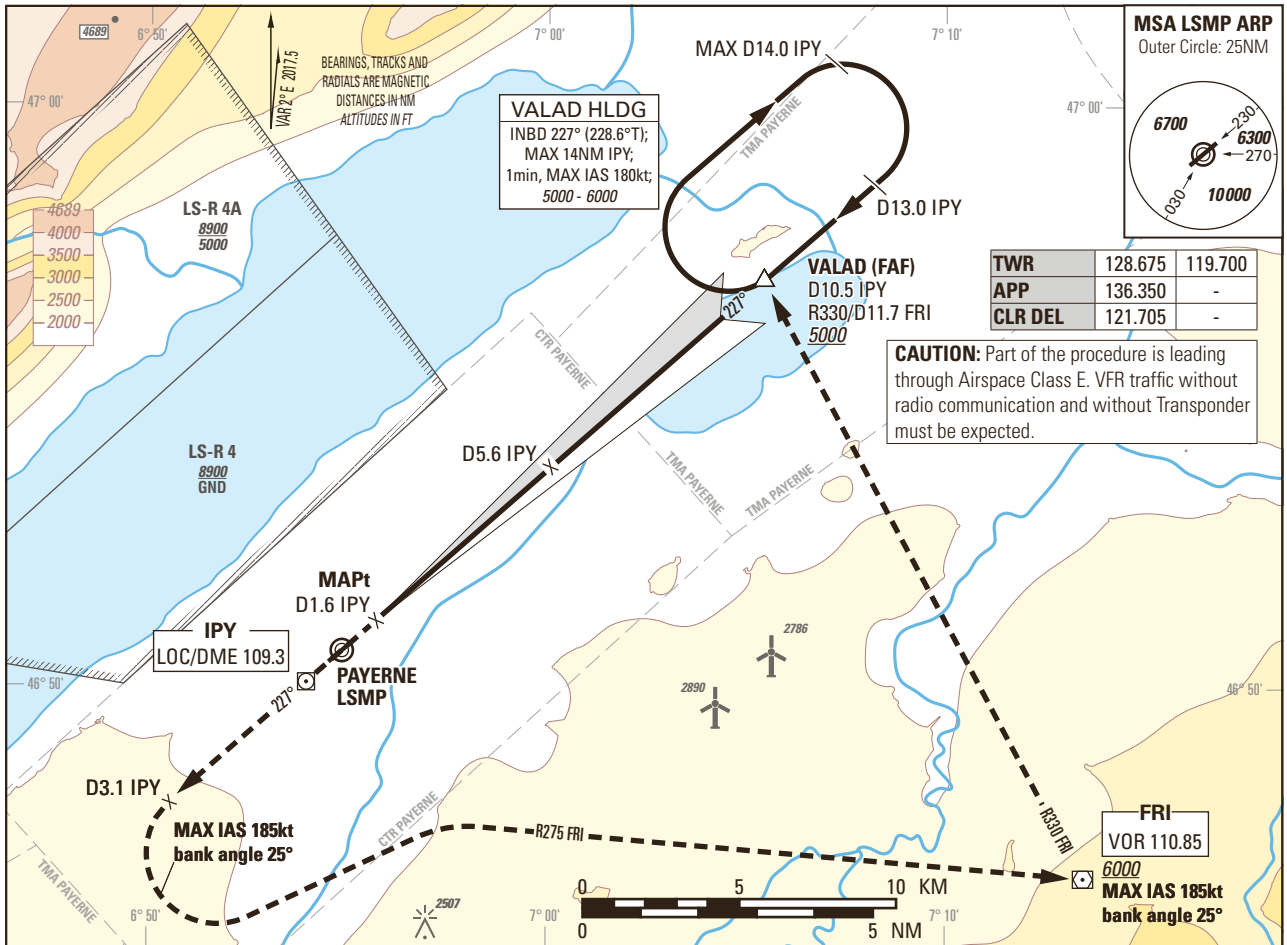


Instrument Approach Chart
(IAC) - ICAO

AD ELEV 1465ft

TRANSITION LEVEL by ATC
TRANSITION ALTITUDE 6000

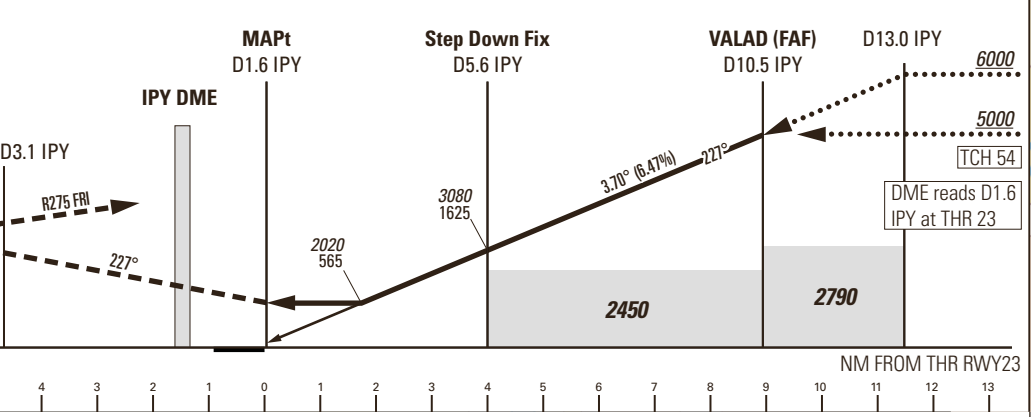
PAYERNE LSMP
LOC 3.7° RWY 23
ACFT CAT A/B/C/D



TWR	128.675	119.700
APP	136.350	-
CLR DEL	121.705	-

MISSED APPROACH

Climb straight ahead. At D3.1 IPY turn left (MAX IAS 185kt, bank angle 25°), intercept R275 FRI inbound. Leave FRI R330 outbound (MAX IAS 185kt, bank angle 25°), proceed to VALAD. Climb to 6000. MNM climb gradient 5.1% to 5000 to remain in controlled airspace.



Missed APCH climb gradient requirement	STRAIGHT-IN APPROACH			
	A	B	C	D
	OBSTACLE CLEARANCE ALTITUDE (HEIGHT)			
2.5%	2200 (745)			
3.4% to 2600	2020 (565)			
	MINIMUM DESCENT ALTITUDE (HEIGHT)			
3.4% to 2600	2020 (565)			
CIRCLING ¹⁾	A	B	C	D
OCA(H)	2110 (645)	2450 (985)	2790 (1325)	2830 (1365)

IPY DME	3	4	5	6	8	10	10.5	13
recommended CROSSING ALT	2060	2450	2850	3240	4020	4810	5000	6000
ROD	GS kt	90	110	130	150			
	FT/MIN	589	720	851	982			

NOTE
¹⁾ Circling north of RWY only. Circling must remain inside CTR at all time. Remain SE of Lake Neuchatel. MAX distance parallel of RWY for all ACFT Cat: 2NM.

CAUTION
- MAX GS 150kt in final approach to avoid ROD > 1000ft/min.
- Non-standard approach angle.

REMARK
- OBST limitation and restriction according to non-instrument RWY criteria.

COR: RMK, TWR ALTN FREQ (WEF 18MAY2023)

THIS PAGE INTENTIONALLY LEFT BLANK