

AREA CHART - ICAO

ROUTING AFTER SID SIROD / DIPIR DEPARTURES

GENEVA - LSGG

**DEFINITION OF ROUTINGS**

Caution: RNAV EQPT compulsory for flights planned at or above FL100.

**After DIPIR DEP:**

FPL via DJL:  
- proceed via B37 to DJL, if CLR FL200 or above, cross IBABA at FL200 or above.

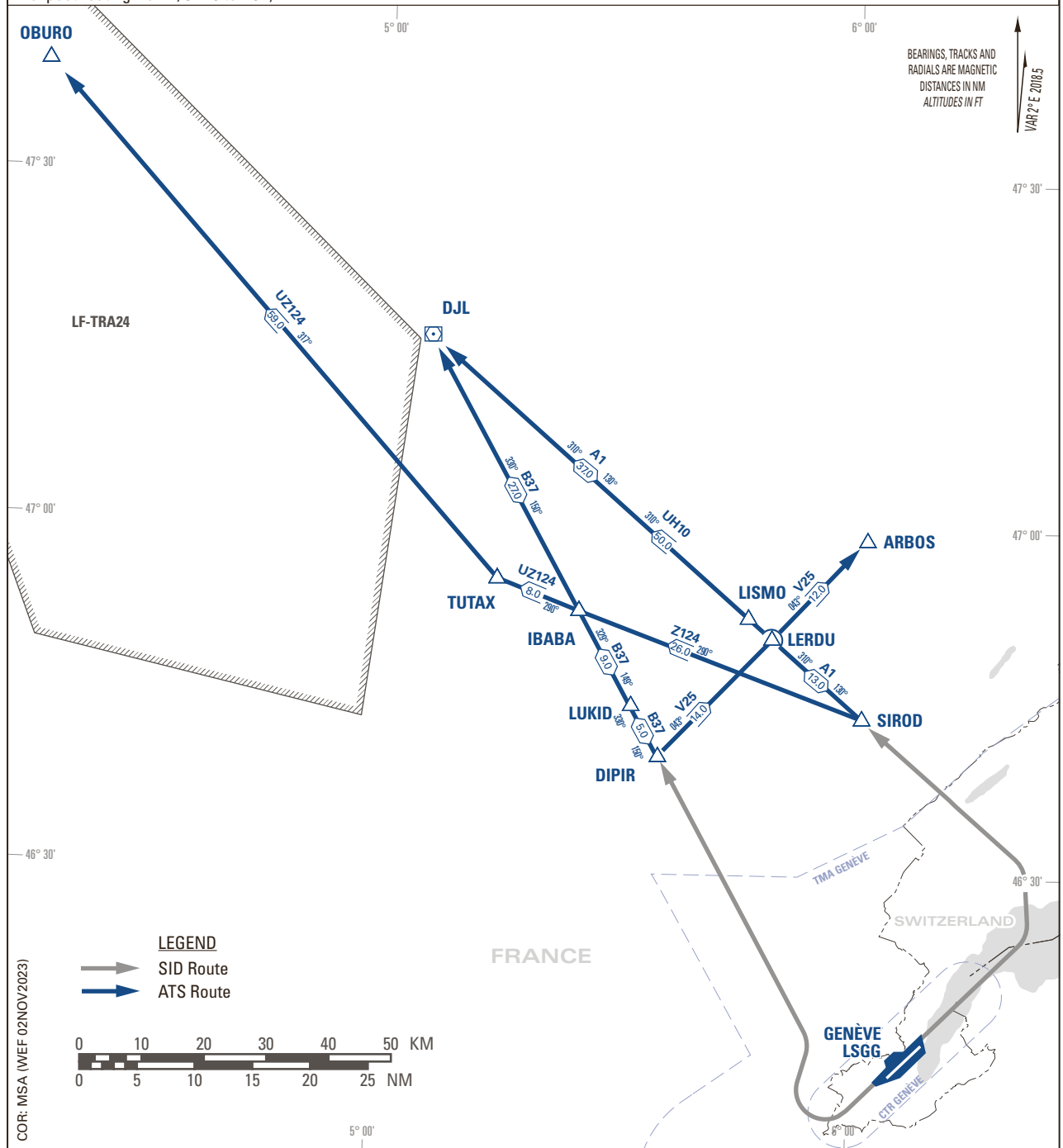
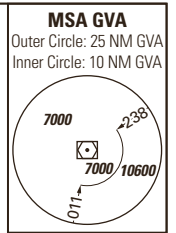
FPL via ARBOS:  
- proceed via V25 to ARBOS, cross LERDU at FL200 or above.

FPL via OBURO:  
- proceed via B37 to IBABA then UZ124 to OBURO, cross IBABA at FL220 or above. (Not available during LF-TRA24 activity; expect routing via B37 to DJL).

**After SIROD DEP:**

FPL via DJL:  
- proceed via A1/UH10 to DJL, if CLR FL200 or above, cross D30 DJL at FL200 or above.

FPL via OBURO:  
- proceed via Z124/UZ124 to OBURO, cross IBABA at FL220 or above. (Not available during LF-TRA24 activity; expect routing via A1/UH10 to DJL).



THIS PAGE INTENTIONALLY LEFT BLANK