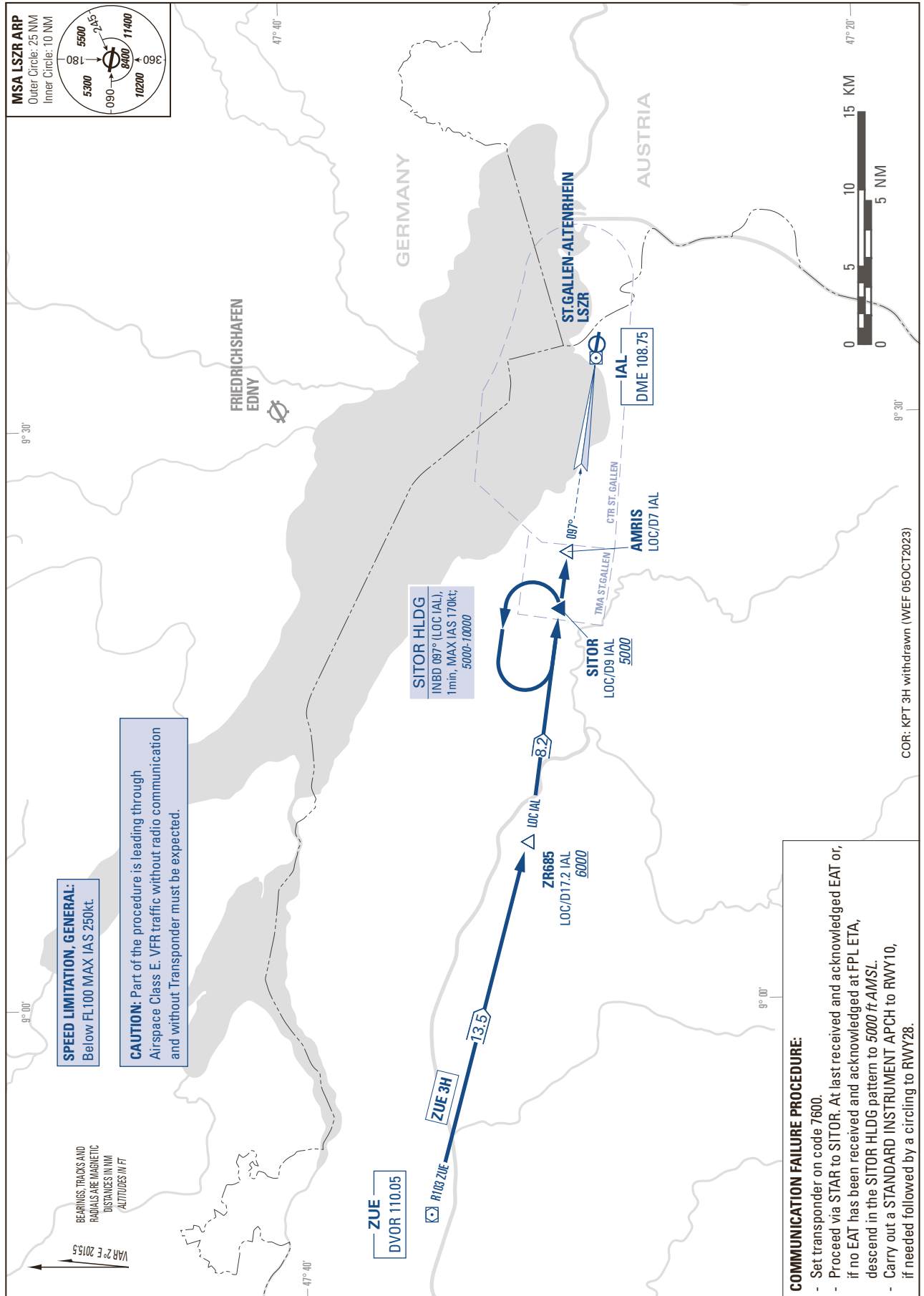


STANDARD INSTRUMENT ARRIVAL CHART  
(STAR) - ICAO

TRANSITION LEVEL by ATC  
TRANSITION ALTITUDE 5000

ST. GALLEN-ALTENRHEIN LSZR  
STAR to SITOR - NON RNAV



THIS PAGE INTENTIONALLY LEFT BLANK