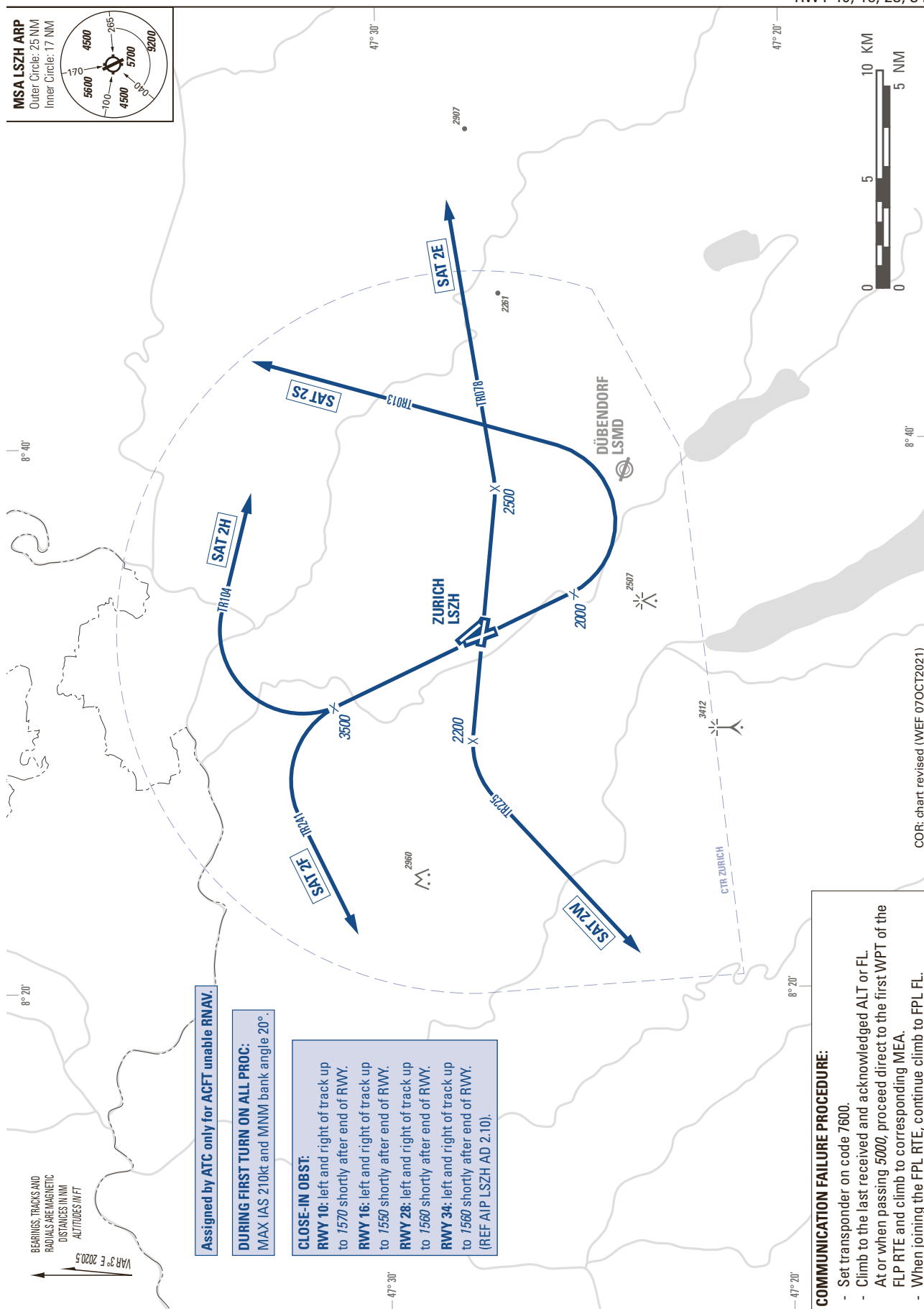
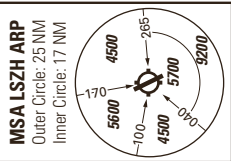


STANDARD INSTRUMENT DEPARTURE CHART (SID) - ICAO

TRANSITION LEVEL by ATC
TRANSITION ALTITUDE 7000

ZURICH LSZH
SID Straight Ahead and Turn
RWY 10, 16, 28, 34



VAR 3° E 2020.5
BEARINGS, TRACKS AND RADIALS ARE MAGNETIC
DISTANCES IN NM
ALTITUDES IN FT

Assigned by ATC only for ACFT unable RNAV.

DURING FIRST TURN ON ALL PROC:
MAX IAS 210kt and MNM bank angle 20°.

CLOSE-IN OBST:
RWY 10: left and right of track up to 1570 shortly after end of RWY.
RWY 16: left and right of track up to 1550 shortly after end of RWY.
RWY 28: left and right of track up to 1560 shortly after end of RWY.
RWY 34: left and right of track up to 1560 shortly after end of RWY.
 (REF AIP LSZH AD 2.10).

COMMUNICATION FAILURE PROCEDURE:

- Set transponder on code 7600.
- Climb to the last received and acknowledged ALT or FL. At or when passing 5000, proceed direct to the first WPT of the FLP RTE and climb to corresponding MEA.
- When joining the FPL RTE, continue climb to FPL FL.

COR: chart revised (WEF 07OCT2021)

THIS PAGE INTENTIONALLY LEFT BLANK