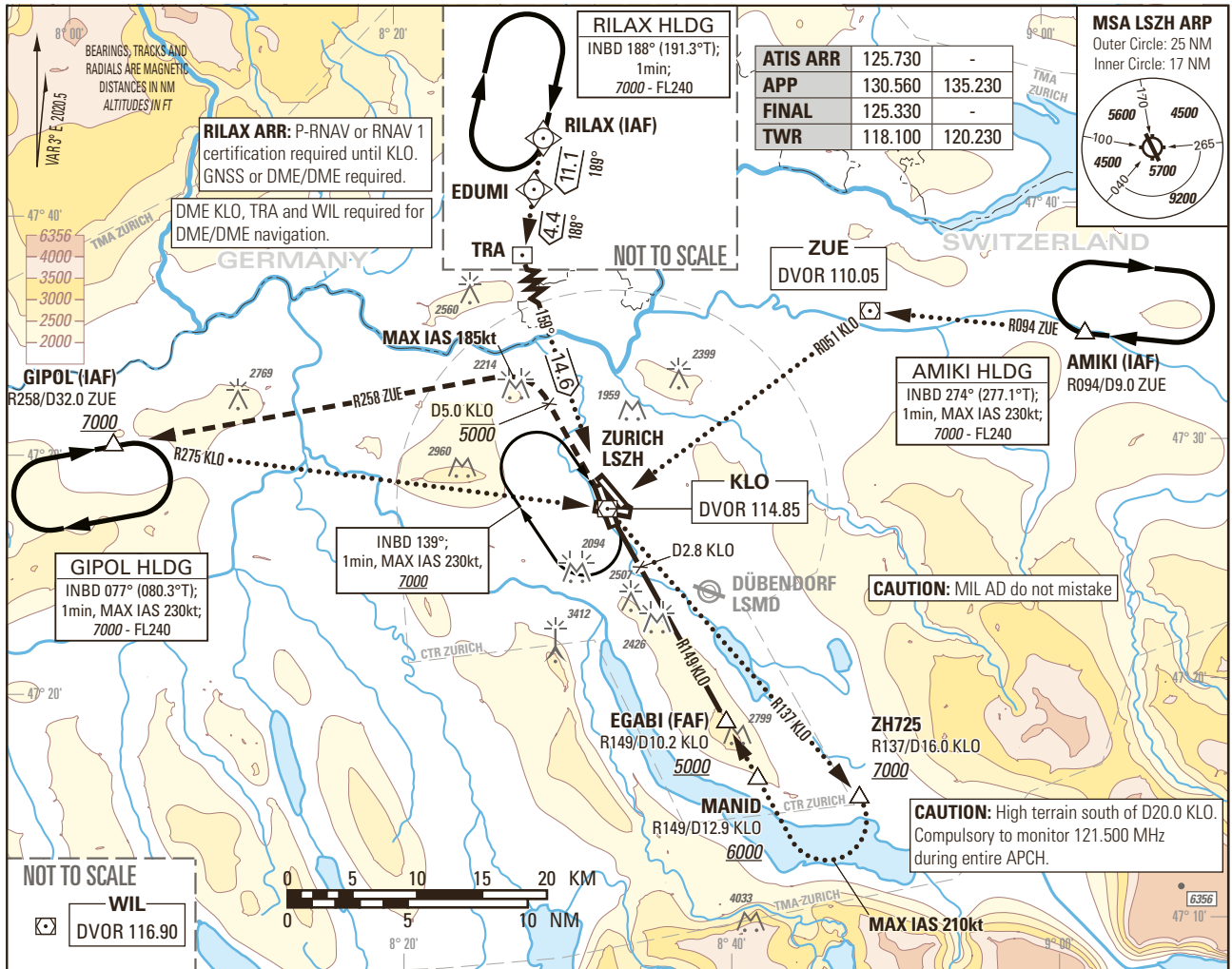


Instrument Approach Chart
(IAC) - ICAO

AD ELEV 1417ft

TRANSITION LEVEL by ATC
TRANSITION ALTITUDE 7000

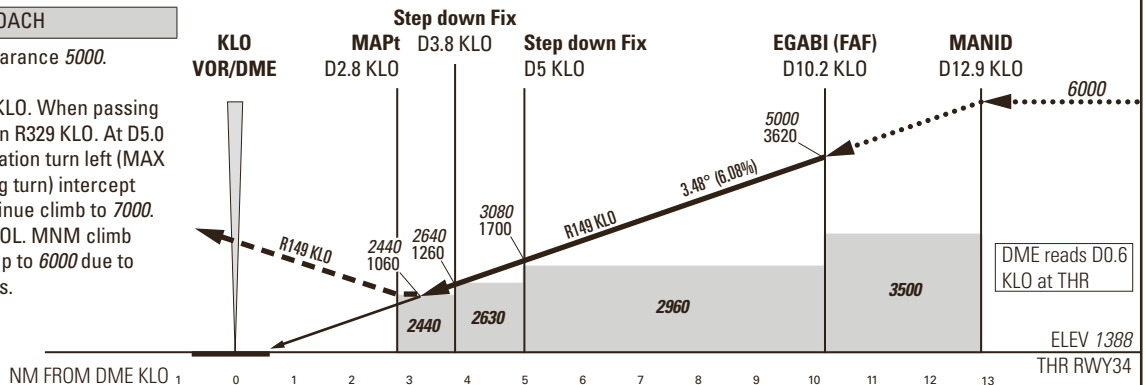
ZURICH LSZH
VOR RWY 34



MISSED APPROACH

Initial climb clearance 5000.

Climb on R149 KLO. When passing KLO continue on R329 KLO. At D5.0 KLO past the station turn left (MAX IAS 185kt during turn) intercept R258 ZUE. Continue climb to 7000. Proceed to GIPOL. MNM climb gradient 3.7% up to 6000 due to ASP restrictions.



OBSTACLE CLEARANCE ALTITUDE (HEIGHT)	A	B	C	D
STRAIGHT-IN APPROACH	2440 (1060)			

ROD	GS kt	90	110	130	150
	FT/MIN	554	677	801	924

DME KLO	4	5	6	7	8	9	10	11	12
RECOMMENDED CROSSING ALTITUDE (HEIGHT)	2710 (1330)	3080 (1700)	3450 (2070)	3820 (2440)	4190 (2810)	4560 (3180)	4930 (3550)	5300 (3920)	5670 (4290)

CAUTION
- 0.6NM BFR THR34 visual segment surface (VSS) penetrated by building up to 1530ft AMSL.

COR: WIL VOR renewed to DVOR (WEF 15JUN2023)

THIS PAGE INTENTIONALLY LEFT BLANK