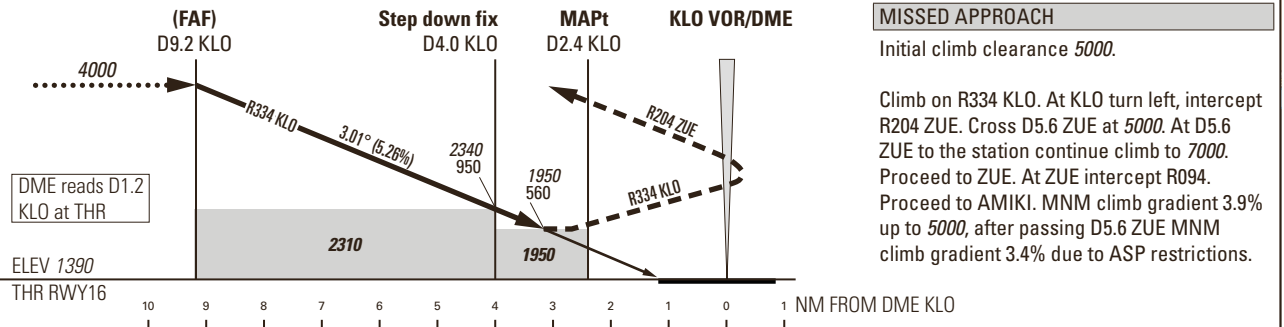
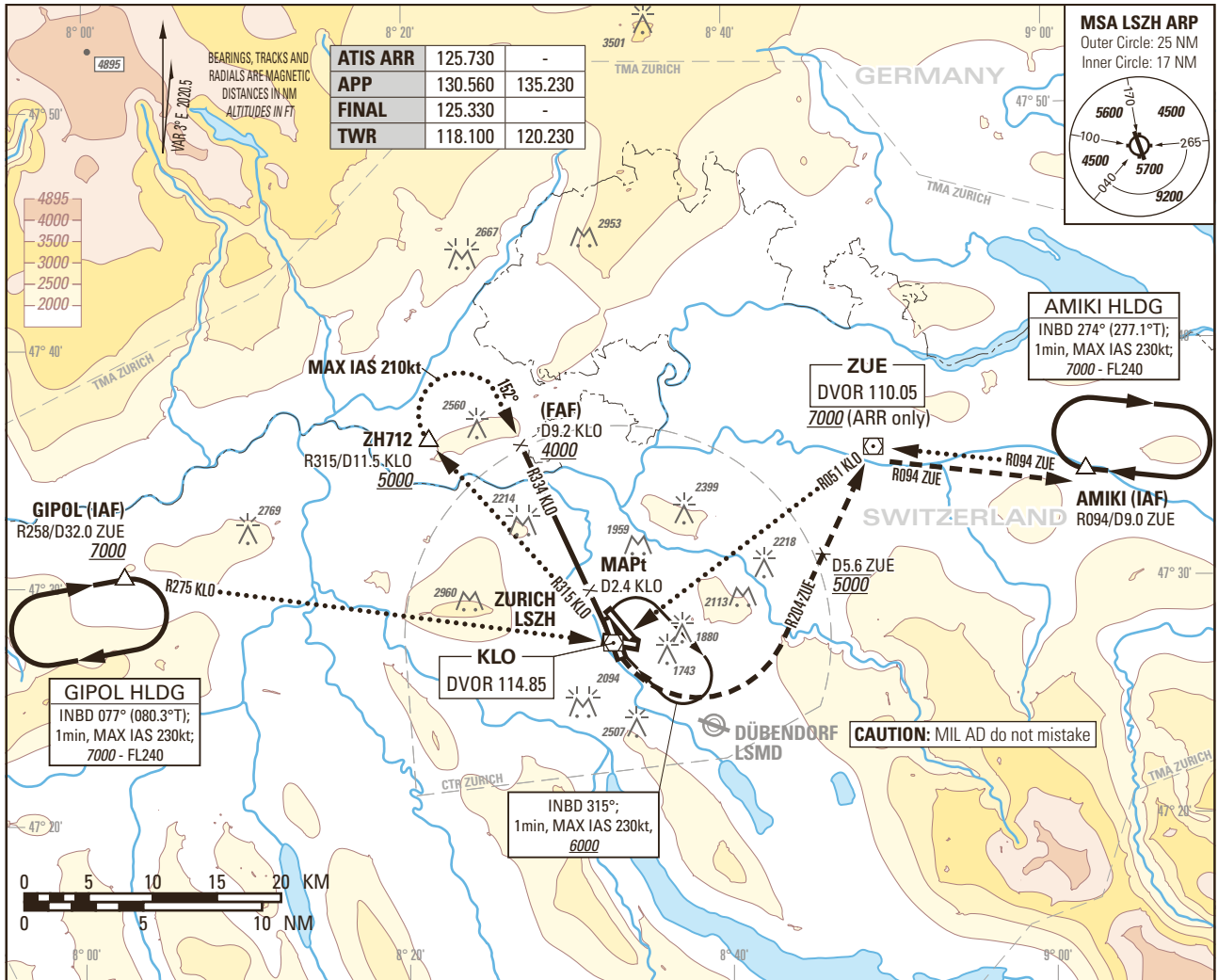


Instrument Approach Chart
(IAC) - ICAO

AD ELEV 1417ft

TRANSITION LEVEL by ATC
TRANSITION ALTITUDE 7000

ZURICH LSZH
VOR RWY 16



| DIST DME KLO | 9 | 8 | 7 | 6 | 5 | 4 | 3 |
|--------------------------|------|------|------|------|------|------|------|
| recommended CROSSING ALT | 3940 | 3620 | 3300 | 2980 | 2660 | 2340 | 2020 |
| recommended CROSSING HGT | 2550 | 2230 | 1910 | 1590 | 1270 | 950 | 630 |

| ROD | GS kt | 90 | 110 | 130 | 150 |
|-----|--------|-----|-----|-----|-----|
| | FT/MIN | 479 | 586 | 692 | 799 |

| OBSTACLE CLERANCE ALTITUDE (HEIGHT) | A | B | C | D |
|-------------------------------------|------------|---|---|---|
| STRAIGHT-IN APPROACH | 1950 (560) | | | |

CAUTION
0.8 NM BFR THR16 Visual Segment Surface (VSS) penetrated by trees up to 1580ft AMSL.

COR: Completely revised (WEF 02DEC2021)

THIS PAGE INTENTIONALLY LEFT BLANK