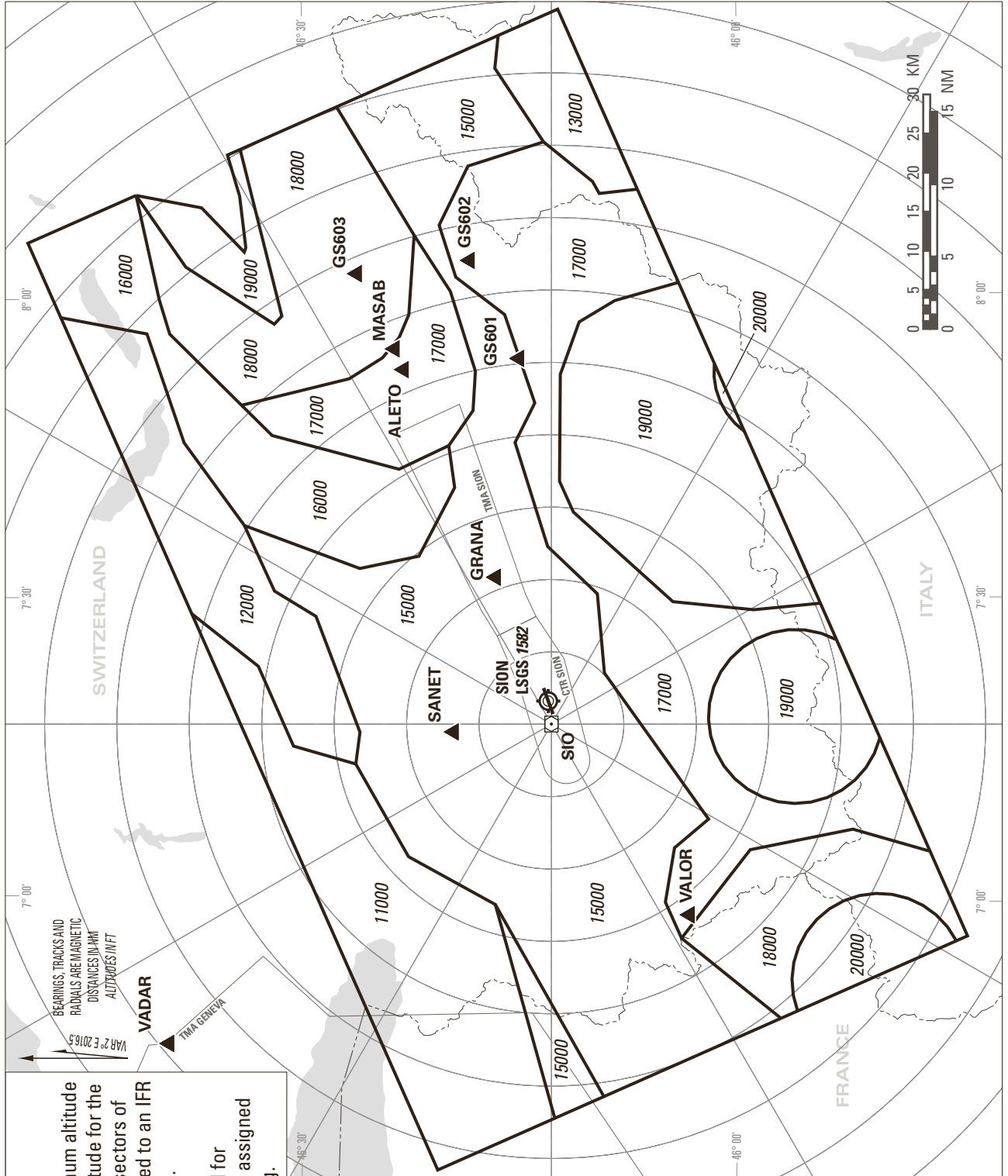


ATC SURVEILLANCE MINIMUM ALTITUDE CHART (ADTEMPERATURES FROM -15° TO -7°C)



NOTES:
The ATC surveillance minimum altitude chart shows the lowest altitude for the APPROACH / DEPARTURE sectors of LSGS which may be assigned to an IFR flight under radar vectoring.
The chart may only be used for cross-checking of altitudes assigned while under radar vectoring.

Altitudes: LSGS QNH.
Transition ALT : 17000

Minimum altitudes are calculated according ICAO norms (PANS-ATM Doc 4444 & PANS-OPS Doc 8168).

Minimum altitudes are protected for low temperatures from minus 15 to minus 7 degrees Celsius (LSGS temperature).

Sectors indicated all 30°, distances indicated all 5NM, based on SIO DVOR/DME.

COR: ALT,VAR (WFF 26MAR2020)

THIS PAGE INTENTIONALLY LEFT BLANK