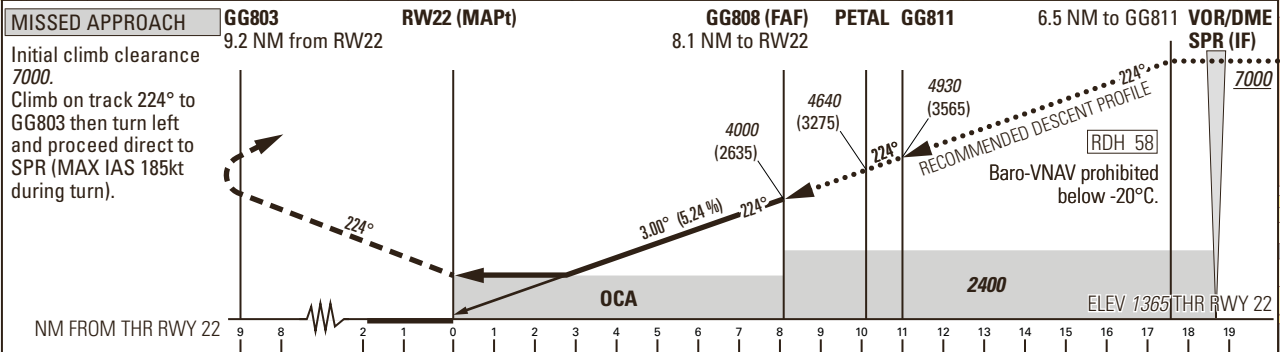
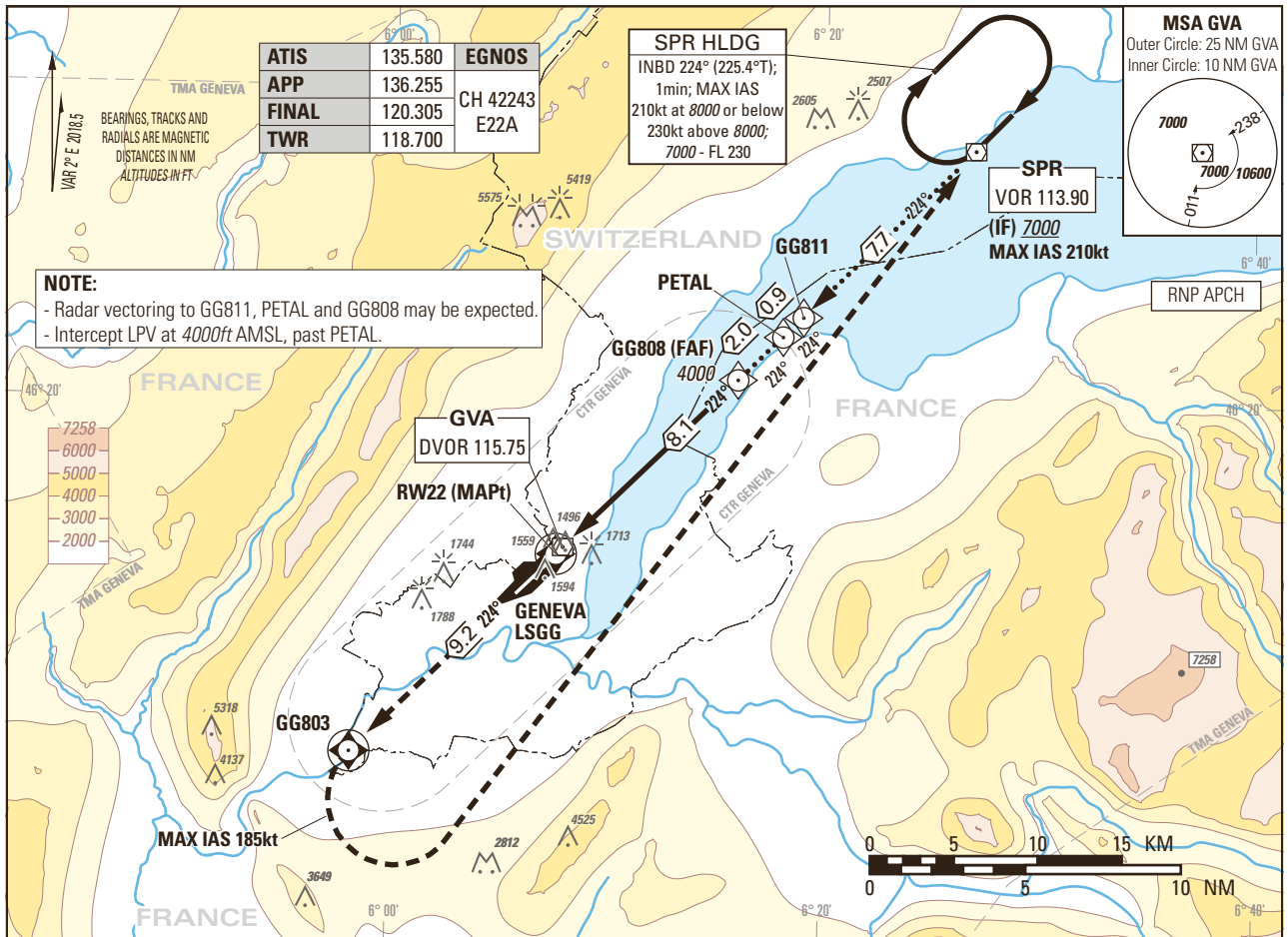


Instrument Approach Chart
(IAC) - ICAO

AD ELEV 1411ft

TRANSITION LEVEL by ATC
TRANSITION ALTITUDE 7000

GENEVA LSGG
RNP RWY 22



Missed APCH climb gradient requirement	STRAIGHT-IN APPROACH			
	A	B	C	D
	OCA(H) LPV CAT I			
2.5%	N/A	2005 (640)	2015 (650)	2025 (660)
3.3%	4300	1532 (167)	1540 (175)	1550 (185)
	DA(H) LPV CAT I			
3.3%	4300	1565 (200)		
	OCA(H) LNAV/VNAV			
2.5%	N/A	2422 (1057)	2432 (1067)	2453 (1088)
3.8%	4800	1706 (341)	1715 (350)	1731 (366)
	OCA(H) LNAV			
2.5%	N/A	2850 (1485)		
3.8%	4800	1870 (505)		
Circling ¹⁾²⁾	2100 (689)	2150 (739)	2400 (989)	

DIST RWY 22	2	4	6	8.1	10.1	11	12	14	16	17.5
recommended crossing ALTITUDE (HEIGHT)	2060 (695)	2700 (1335)	3340 (1975)	4000 (2635)	4640 (3275)	4930 (3565)	5250 (3885)	5890 (4525)	6520 (5155)	7000 (5635)

ROD	GS kt	90	110	130	150
	FT/MIN	478	584	690	796

CAUTION
0.8 NM before THR22 Visual Segment Surface (VSS) penetrated by power lines and trees up to 1527ft AMSL.

NOTE
¹⁾ Above aerodrome ELEV 1411ft, circling on request of ATC under special conditions and north of RWY only, speed (MAX IAS 180kt) and radius for category D as for category C aircraft.
²⁾ Circling must remain inside CTR at all times.

COR: MSA, MOCA, OCA(H), VSS, Circling minima and Airspace MNM climb gradient withdrawn (WEF 02NOV2023)

Input data

Operation Type	0
SBAS Provider	1
Airport Identifier	LSGG
Runway	22
Runway Direction	0
Approach Performance Designator	0
Route Indicator	
Reference Path Data Selector	0
Reference Path Identifier	E22A
LTP/FTP Latitude	461501.2980N
LTP/FTP Longitude	0060737.2190E
LTP/FTP Ellipsoidal Height (metres)	465.9
FPAP Latitude	461331.4425N
Delta FPAP Latitude (seconds)	-89.8555
FPAP Longitude	0060525.3575E
Delta FPAP Longitude (seconds)	-131.8615
Threshold Crossing Height	58.0
TCH Units Selector	0
Glidepath Angle (degrees)	3.00
Course Width (metres)	105.00
Length Offset (metres)	0
HAL (metres)	40.0
VAL (metres)	35.0

Output data

Data Block	10 07 07 13 0C 16 00 00 01 32 32 05 64 37 D9 13 06 22 A1 02 33 26 01 42 FD D5 F9 FB 44 02 2C 01 64 00 C8 AF CF 2C FD EE
Calculated CRC Value	CF2CFDEE

Required Additional Data

ICAO Code	LS
LTP/FTP Orthometric Height (metres)	416.1
FPAP Orthometric Height (metres)	