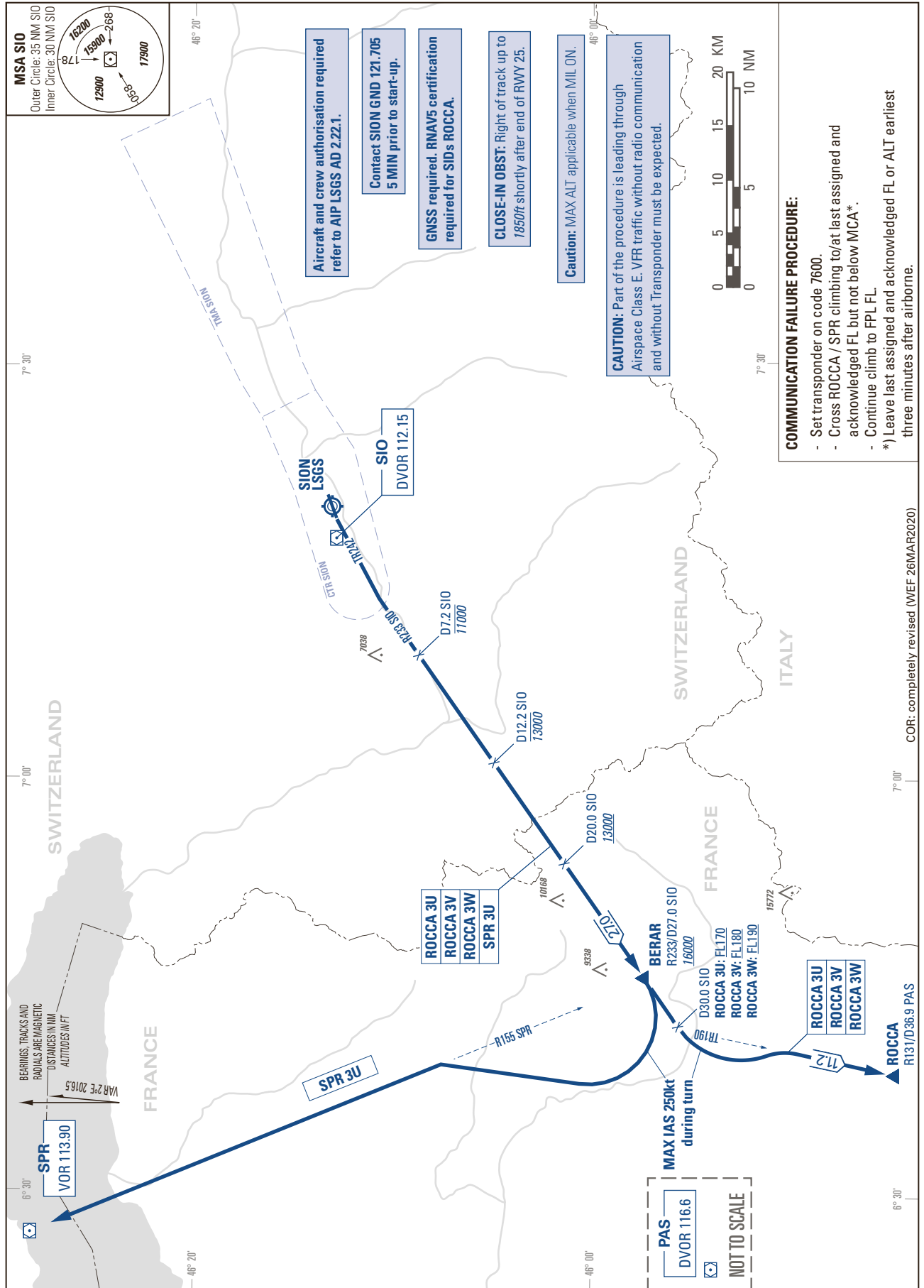


STANDARD INSTRUMENT DEPARTURE CHART  
(SID) - ICAO

TRANSITION LEVEL by ATC  
TRANSITION ALTITUDE 17000

SION LSGS  
HIGH PERFORMANCE  
SID RWY 25



COR: completely revised (WEF 26MAR2020)

THIS PAGE INTENTIONALLY LEFT BLANK