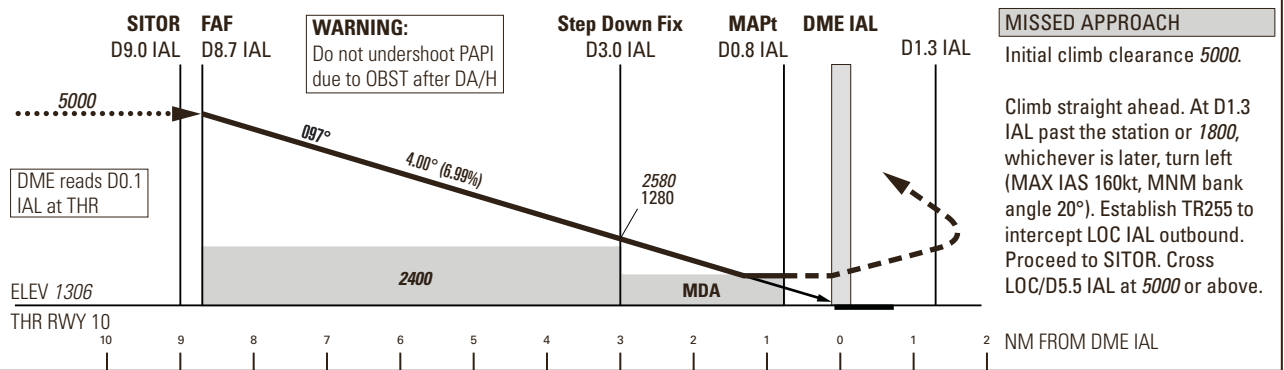
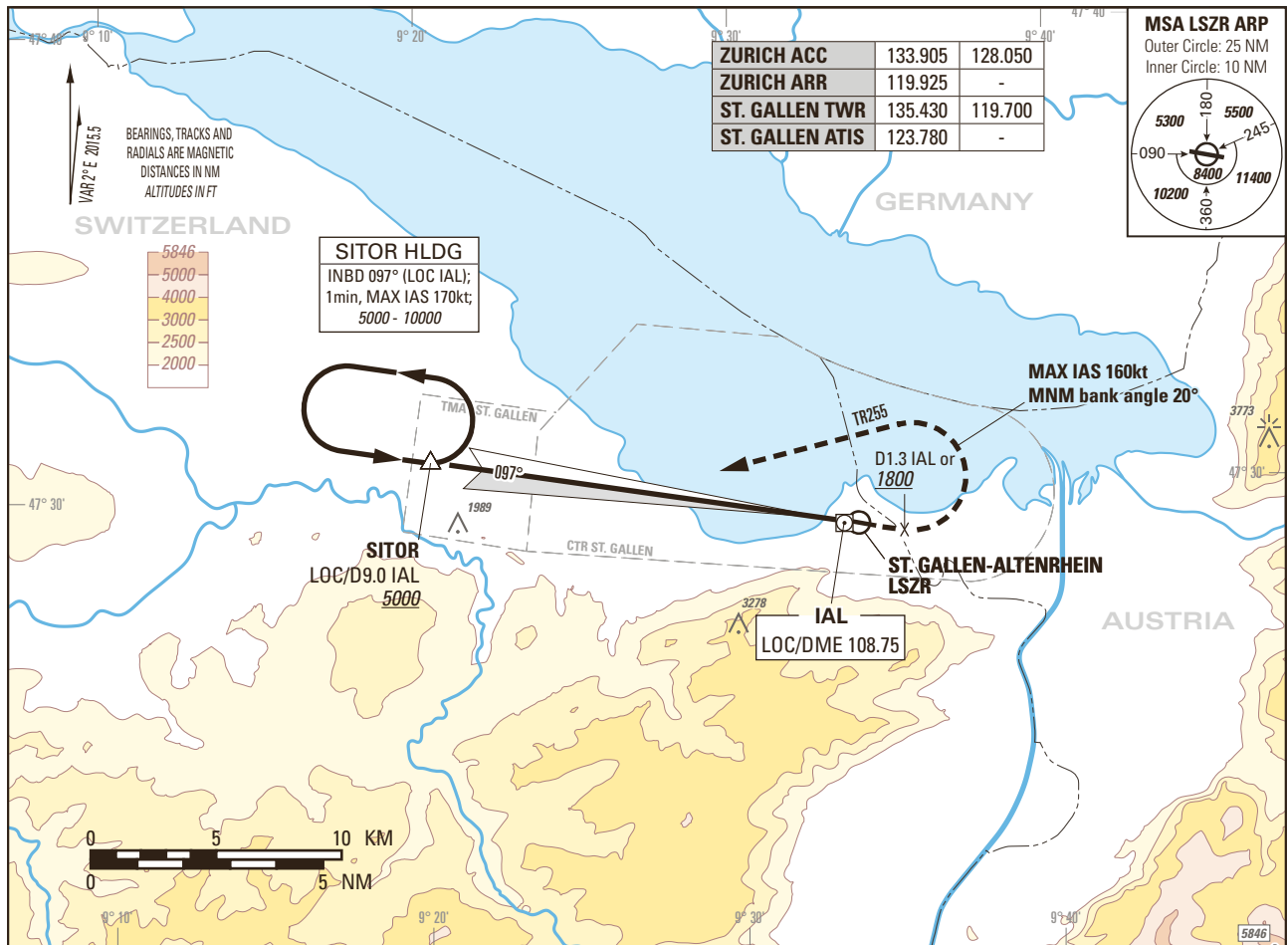


Instrument Approach Chart  
(IAC) - ICAO

AD ELEV 1306ft

TRANSITION LEVEL by ATC  
TRANSITION ALTITUDE 5000

ST. GALLEN-ALTENRHEIN LSZR  
LOC RWY 10, 0.8° OFFSET LEFT  
ACFT CAT A/B/C



|  |            |   |                           |
|--|------------|---|---------------------------|
| OBSTACLE CLEARANCE ALTITUDE (HEIGHT) / OCA (H) | A          | B | C                         |
| STRAIGHT-IN APPROACH                           | 1720 (420) |   |                           |
| CIRCLING <sup>1) 3)</sup>                      | 2170 (870) |   | 2270 (970 <sup>2)</sup> ) |
| MINIMUM DESCENT ALTITUDE (HEIGHT) / MDA(H)     | A          | B | C                         |
| STRAIGHT-IN APPROACH                           | 1806 (500) |   |                           |

|     |        |     |     |     |     |      |      |
|-----|--------|-----|-----|-----|-----|------|------|
| ROD | GS kt  | 80  | 100 | 120 | 140 | 160  | 180  |
|     | FT/MIN | 567 | 708 | 849 | 991 | 1133 | 1274 |

**NOTE**

- <sup>1)</sup> Circling north of AP only.
- <sup>2)</sup> MAX IAS 160kt due to airspace.
- <sup>3)</sup> Remain within CTR.

**REMARK**

- Obstacle limitation and restriction according to non-instrument RWY criteria.

**CAUTION**

- 0.2 NM before THR 10 Visual Segment Surface (VSS) penetrated by trees up to 1380ft.  
- This is not a standard approach angle.

|          |      |      |      |      |      |      |      |      |      |
|----------|------|------|------|------|------|------|------|------|------|
| DME IAL  | 8.7  | 8    | 7    | 6    | 5    | 4    | 3    | 2    | 1    |
| DIST THR | 8.6  | 7.9  | 6.9  | 5.9  | 4.9  | 3.9  | 2.9  | 1.9  | 0.9  |
| ALT FT   | 5000 | 4710 | 4280 | 3860 | 3430 | 3010 | 2580 | 2160 | 1730 |

COR: REMARK (WEF 03DEC2020)

THIS PAGE INTENTIONALLY LEFT BLANK