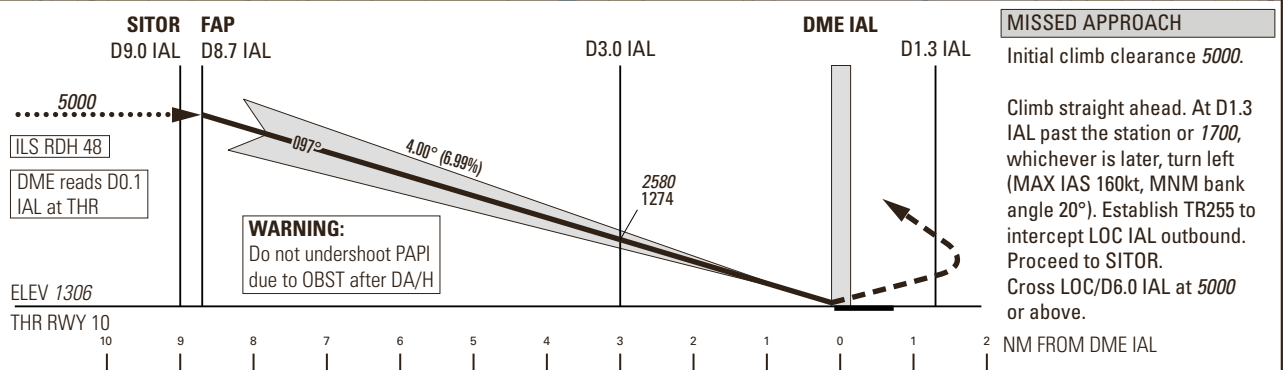
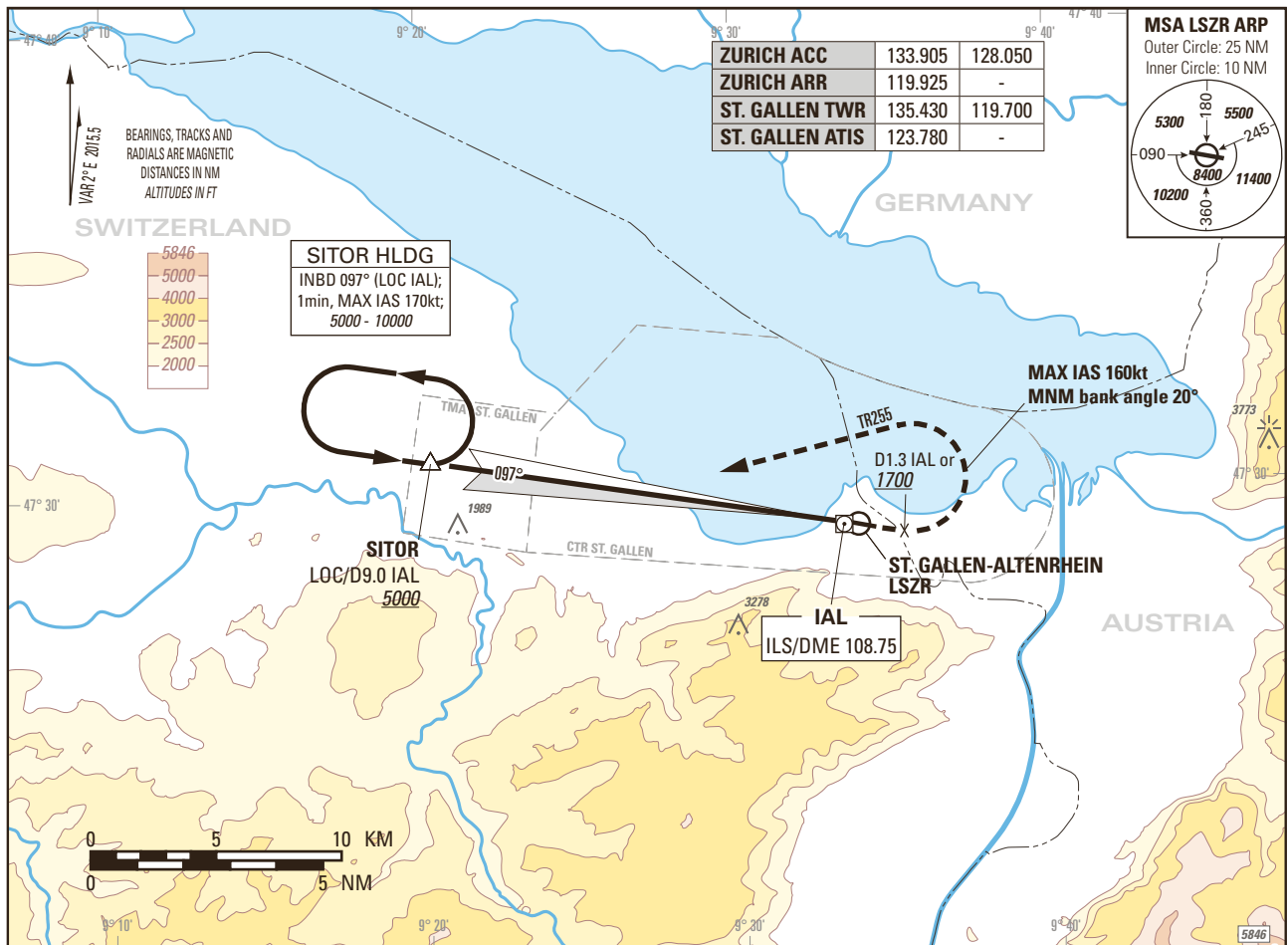


Instrument Approach Chart  
(IAC) - ICAO

AD ELEV 1306ft

TRANSITION LEVEL by ATC  
TRANSITION ALTITUDE 5000

ST. GALLEN-ALTENRHEIN LSZR  
ILS RWY 10, 0.8° OFFSET LEFT  
ACFT CAT A/B/C



OBSTACLE CLEARANCE ALTITUDE (HEIGHT) / OCA (H)	A	B	C
STRAIGHT-IN APPROACH	1743 (438)	1759 (454)	1772 (467)
CIRCLING <sup>1) 3)</sup>	2170 (870)		2270 (970 <sup>2)</sup> )
DECISION ALTITUDE (HEIGHT) / DA(H)	A	B	C
STRAIGHT-IN APPROACH	1806 (500)		

ROD	GS kt	80	100	120	140	160	180
	FT/MIN	567	708	849	991	1133	1274

**NOTE**  
<sup>1)</sup> Circling north of AP only.  
<sup>2)</sup> MAX IAS 160kt due to airspace.  
<sup>3)</sup> Remain within CTR.

**REMARK**  
 - Uncategorized ILS APCH RWY 10 due to obstacle limitation and restriction according to non-instrument RWY criteria.  
 - ILS 10 signal fulfils ICAO Annex 10, CAT I specifications.

DME IAL	8.7	8	7	6	5	4	3	2	1
DIST THR	8.6	7.9	6.9	5.9	4.9	3.9	2.9	1.9	0.9
ALT FT	5000	4710	4280	3860	3430	3010	2580	2160	1730

**CAUTION**  
 - 0.2 NM before THR 10 Visual Segment Surface (VSS) penetrated by trees up to 1380ft.  
 - This is not a standard approach angle.  
 - On 4° APCH angle and GS > 140kt resulting ROD will be > 1000ft/min.

COR: REMARK (WEF 03DEC2020)

THIS PAGE INTENTIONALLY LEFT BLANK