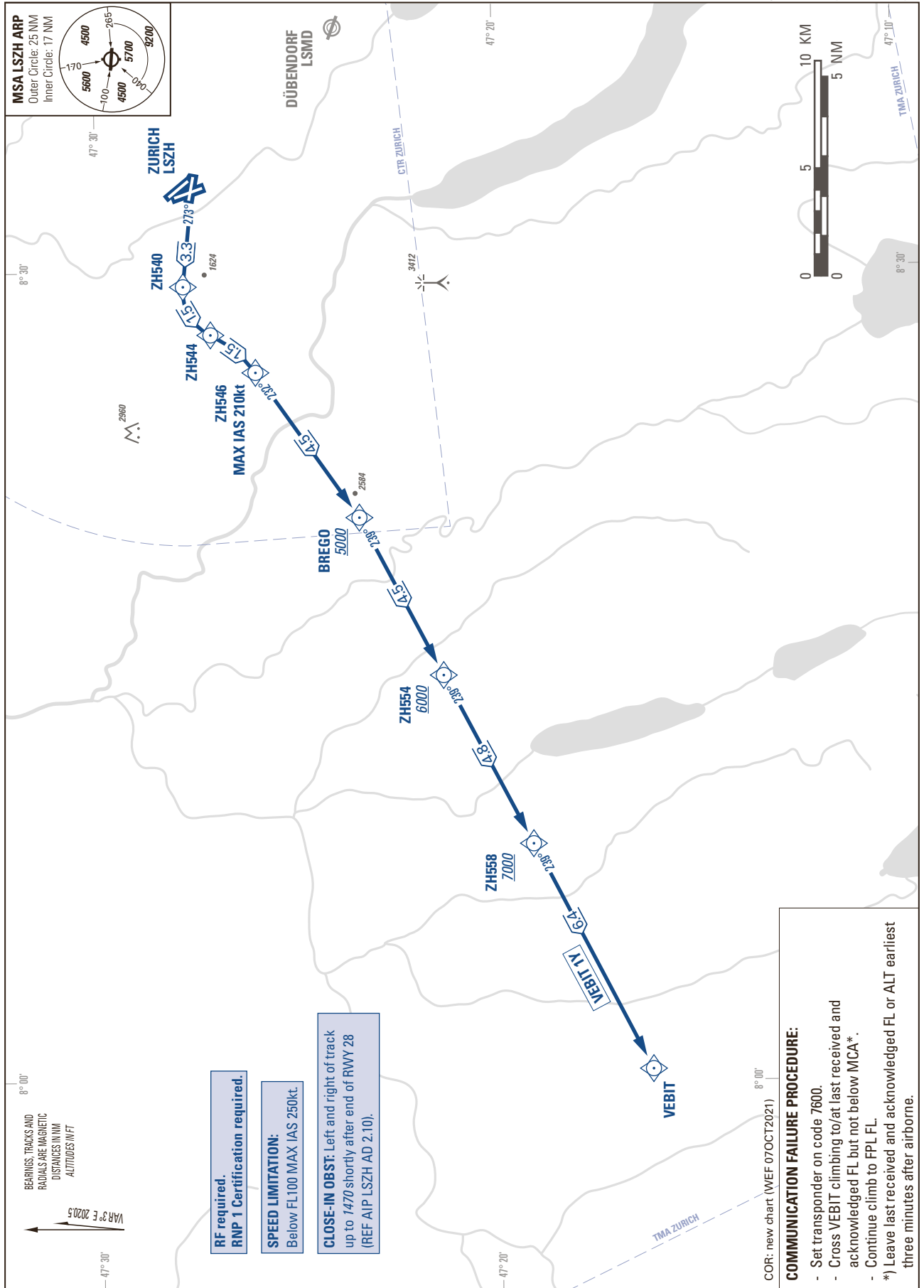


STANDARD INSTRUMENT DEPARTURE CHART
(SID) - ICAO

TRANSITION LEVEL by ATC
TRANSITION ALTITUDE 7000

ZURICH - LSZH
SID RWY 28 - RNP 1 (VEBIT)
(RF required) (by ATC only)



THIS PAGE INTENTIONALLY LEFT BLANK