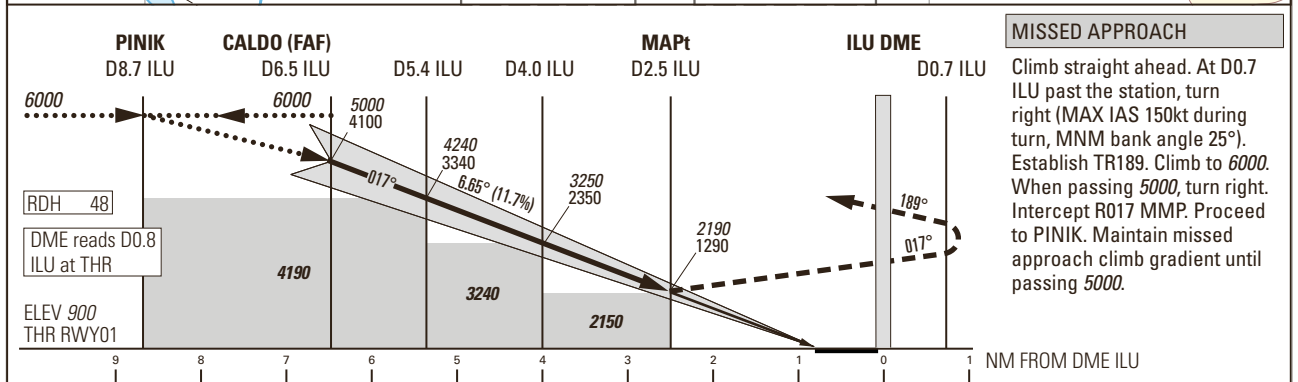
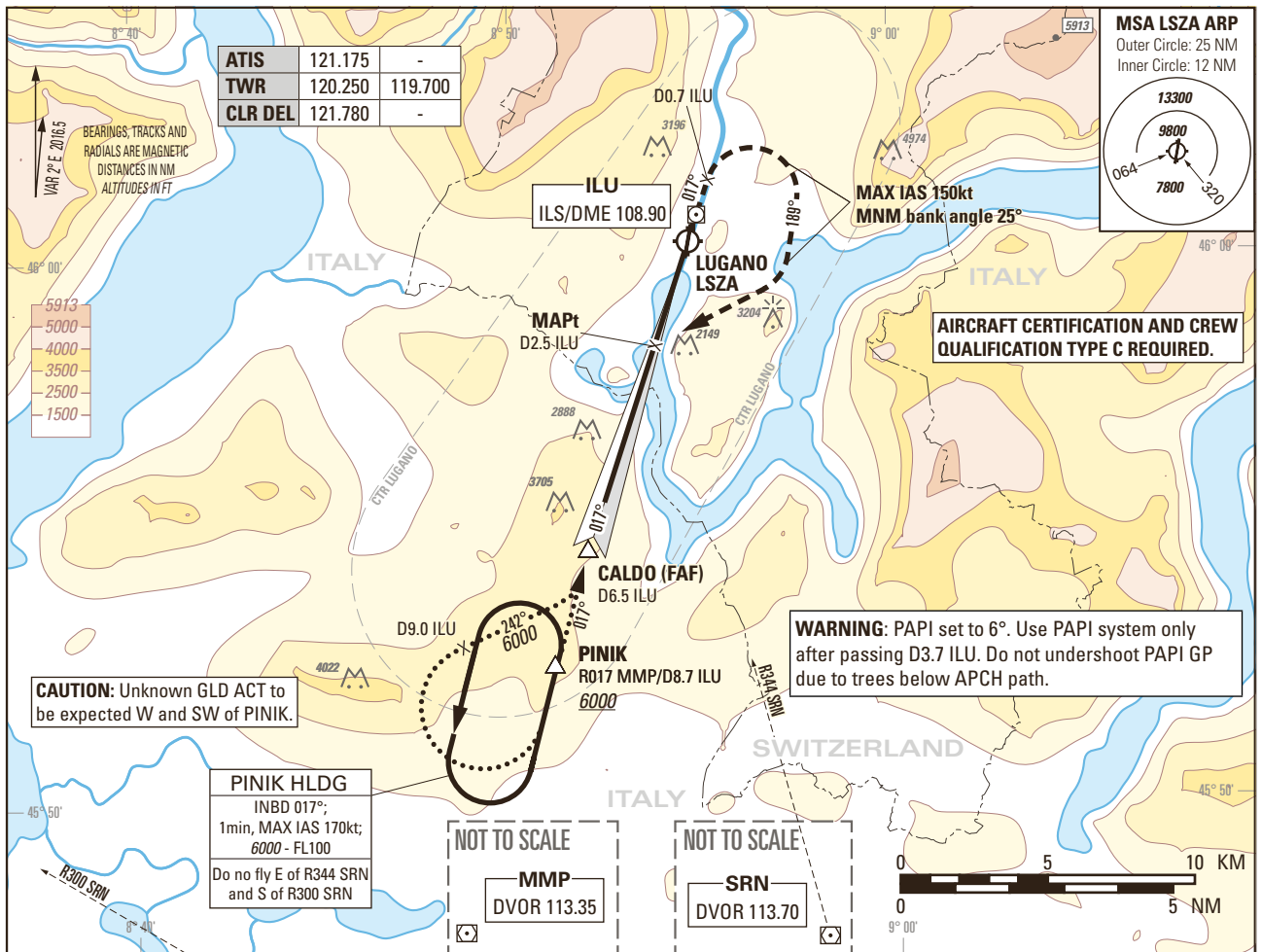


Instrument Approach Chart  
(IAC) - ICAO

AD ELEV 915ft

TRANSITION LEVEL by ATC  
TRANSITION ALTITUDE 6000

LUGANO LSZA  
IGS RWY01 STEEP APCH 6.65°  
ACFT CAT A/B



**MISSED APPROACH**  
Climb straight ahead. At D0.7 ILU past the station, turn right (MAX IAS 150kt during turn, MNM bank angle 25°). Establish TR189. Climb to 6000. When passing 5000, turn right. Intercept R017 MMP. Proceed to PINIK. Maintain missed approach climb gradient until passing 5000.

Missed APCH climb gradient requirement	OBSTACLE CLEARANCE ALTITUDE (HEIGHT) <sup>1)</sup>		VIS m	Conditions	DME ILU							
	STRAIGHT-IN APPROACH				RECOMMENDED CROSSING ALTITUDE (HEIGHT)							
	A <sup>2) 3)</sup>	B <sup>2) 3)</sup>			6	5	4	3				
2.5%	3850 (2950)		7700	-	4670 (3770)	3960 (3060)	3250 (2350)	2540 (1640)				
5.0%	3190 (2290)		6000	Missed APCH climb gradient shall be maintained up to 5000 according to AFM performance data.	ROD	GS kt	70	80	90	110	130	150
6.0%	2920 (2020)		5300		FT/MIN	826	945	1063	1299	1535	1771	
7.0%	2650 (1750)		4600		<b>CAUTION</b>							
8.0%	2390 (1490)		3800		- APCH prohibited if GP U/S. - This is not a standard APCH angle. - On 6.65° APCH angle and GS>80kt resulting ROD will be>1000ft/min.							
9.0%	2150 (1250)		3200		<b>NOTE</b>							

COR: FREQ 122.550 withdrawn (WEF 30JAN2020)

<sup>1)</sup> Circling according specific APCH chart.  
<sup>2)</sup> Higher CAT of ACFT may use the same PROC if they comply with the following speed limitations: Initial APCH 180kt; Final APCH 130kt; Circling 135kt; Holding 170kt; Initial missed APCH 130kt; Final missed APCH 150kt.  
<sup>3)</sup> Published OCA(H) and VIS only applicable when airport qualification recency requirements according AIP LSZA AD 2.22 are met.

THIS PAGE INTENTIONALLY LEFT BLANK