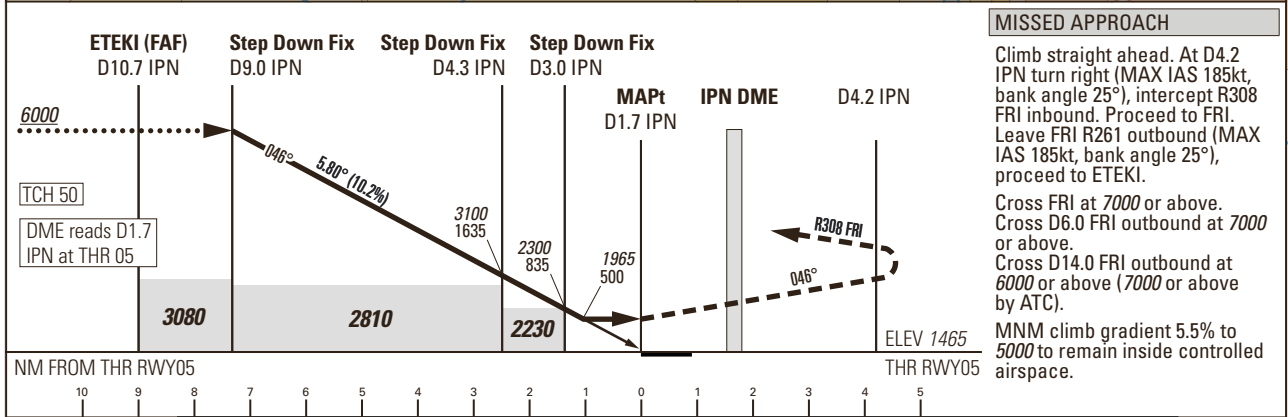
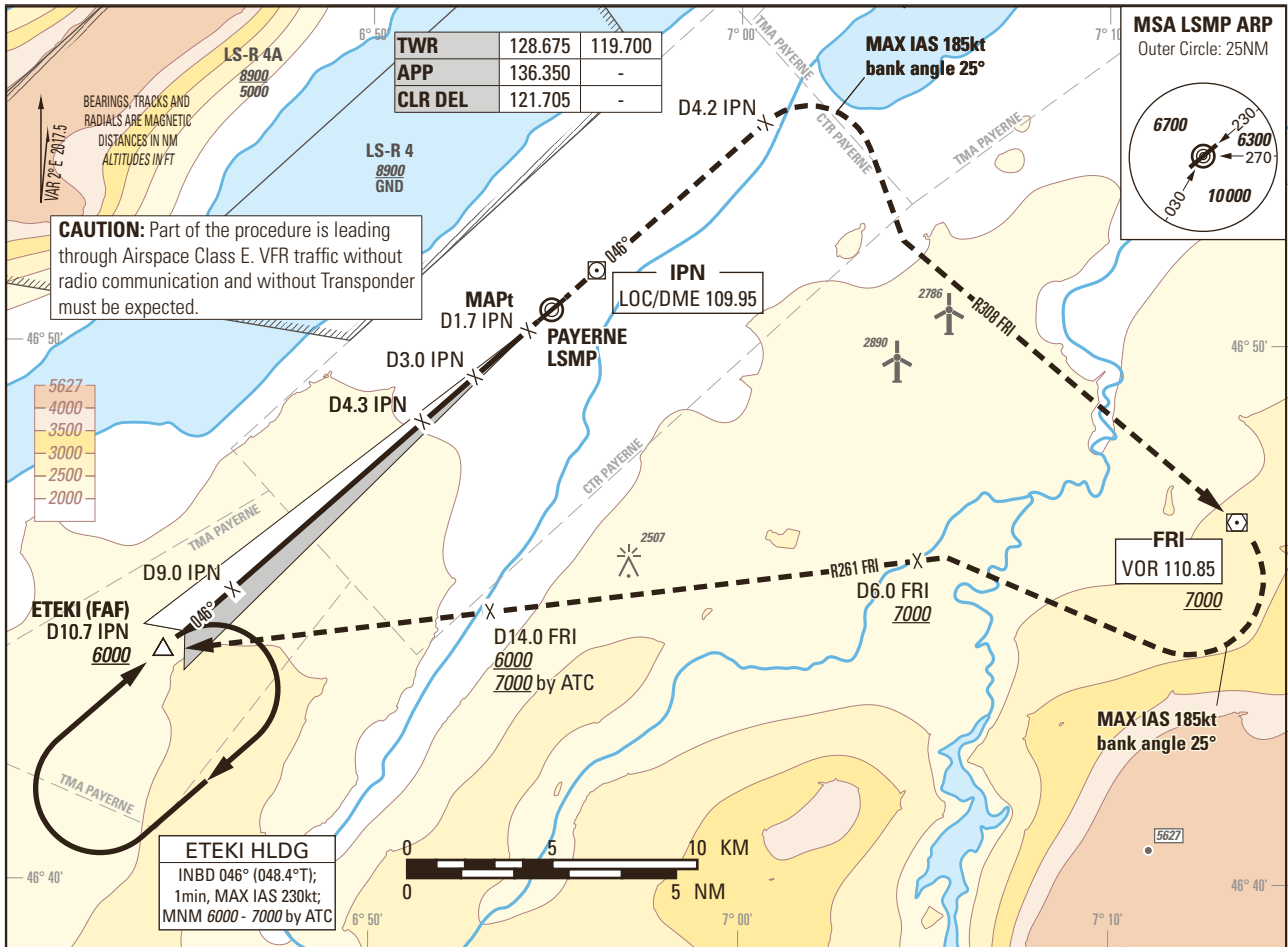


Instrument Approach Chart  
(IAC) - ICAO

AD ELEV 1465ft

TRANSITION LEVEL by ATC  
TRANSITION ALTITUDE 6000

PAYERNE LSMP  
LOC RWY 05 (STEEP APCH 5.80°)  
ACFT CAT A/B/C/D



Missed APCH climb gradient requirement	STRAIGHT-IN APPROACH			
	A	B	C	D
	OBSTACLE CLEARANCE ALTITUDE (HEIGHT)			
2.5%	2650 (1185)			
3.2% to 5200	1940 (475)			
	MINIMUM DESCENT ALTITUDE (HEIGHT)			
3.2% to 5200	1965 (500)			
<b>CIRCLING <sup>1)</sup></b>	A	B	C	D
OCA(H)	2110 (645)	2450 (985)	2790 (1325)	2830 (1365)

IPN DME	9	7	5	3
	recommended CROSSING ALT	6000	4770	3530

ROD	GS kt	90	110	130	150
	FT/MIN	926	1132	1337	1543

**NOTE**  
<sup>1)</sup> Circling north of RWY only. Circling must remain inside CTR at all time. Remain SE of Lake Neuchatel. MAX distance parallel of RWY for all ACFT Cat: 2NM.

**CAUTION**  
- MAX GS 115kt in final approach to avoid ROD > 1000ft/min.  
- Non-standard approach angle.

**REMARK**  
- OBST limitation and restriction according to non-instrument RWY criteria.

COR: RMK, TWR ALTN FREQ, editorial (WEF 18MAY2023)

THIS PAGE INTENTIONALLY LEFT BLANK