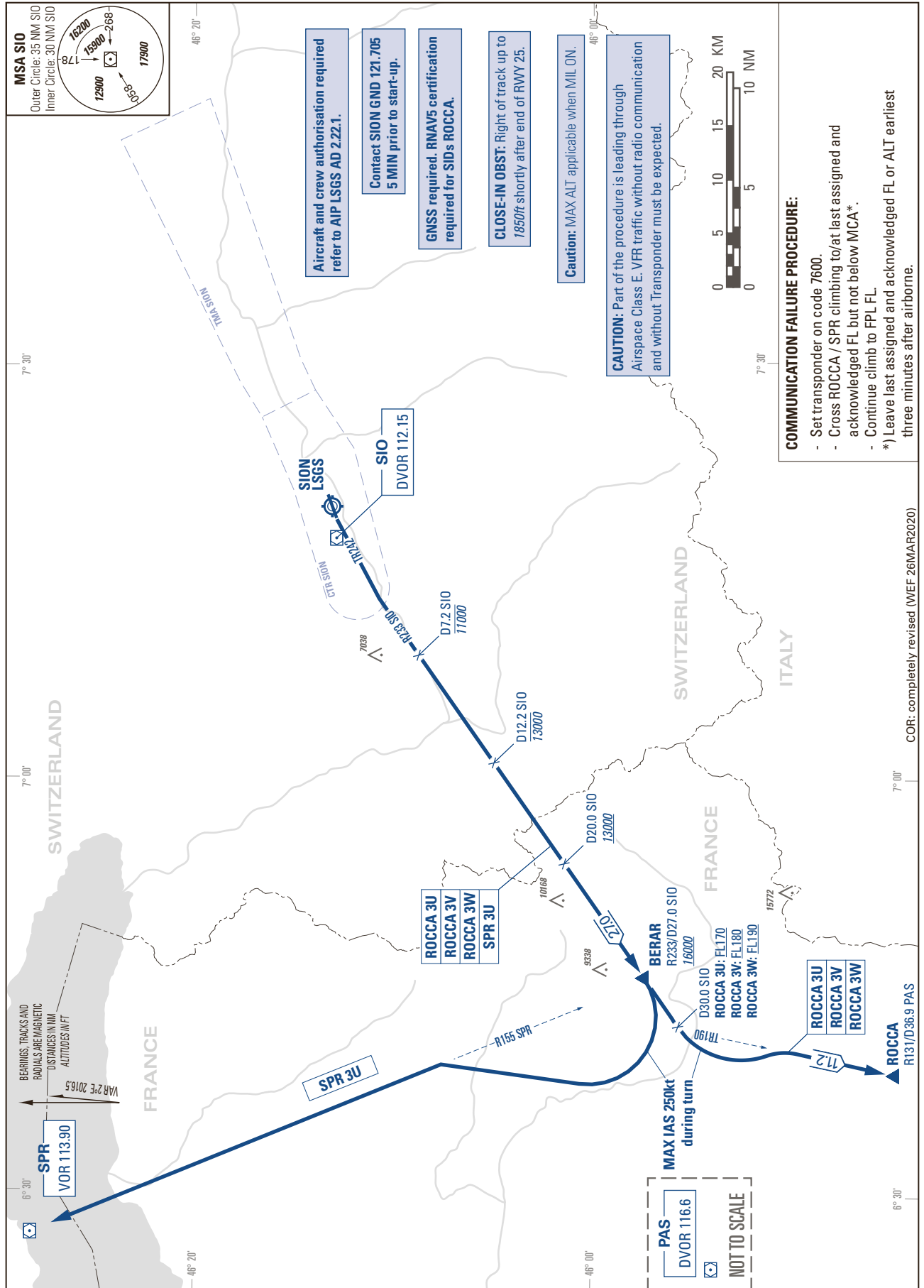


STANDARD INSTRUMENT DEPARTURE CHART
(SID) - ICAO

TRANSITION LEVEL by ATC
TRANSITION ALTITUDE 17000

SION LSGS
HIGH PERFORMANCE
SID RWY 25



COR: completely revised (WEF 26MAR2020)

THIS PAGE INTENTIONALLY LEFT BLANK