

STANDARD INSTRUMENT ARRIVAL CHART
(STAR) - ICAO

TRANSITION LEVEL by ATC
TRANSITION ALTITUDE 7000

GENEVA LSGG
STAR RWY 04 - RNAV
BENOT - ULMES

COMMUNICATION FAILURE PROCEDURE:

- Set transponder on code 7600.
- Proceed direct to GVA at last assigned and acknowledged FL.
- Descend to FL100 in the GVA HLDG pattern (If already below FL100, climb to FL100 and proceed to GVA).
- Leave GVA HLDG at FL100 and proceed either to SPR or PAS according to RWY in use.
- Maintain FL100 until passing SPR/PAS.
- Carry out a standard instrument approach according to IAC.
- For ACFE equipped with onboard telephone, dial +41 22 798 7600 and mention last RTF channel used.

SPEED LIMITATION, GENERAL:

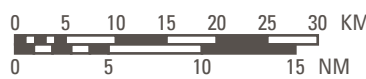
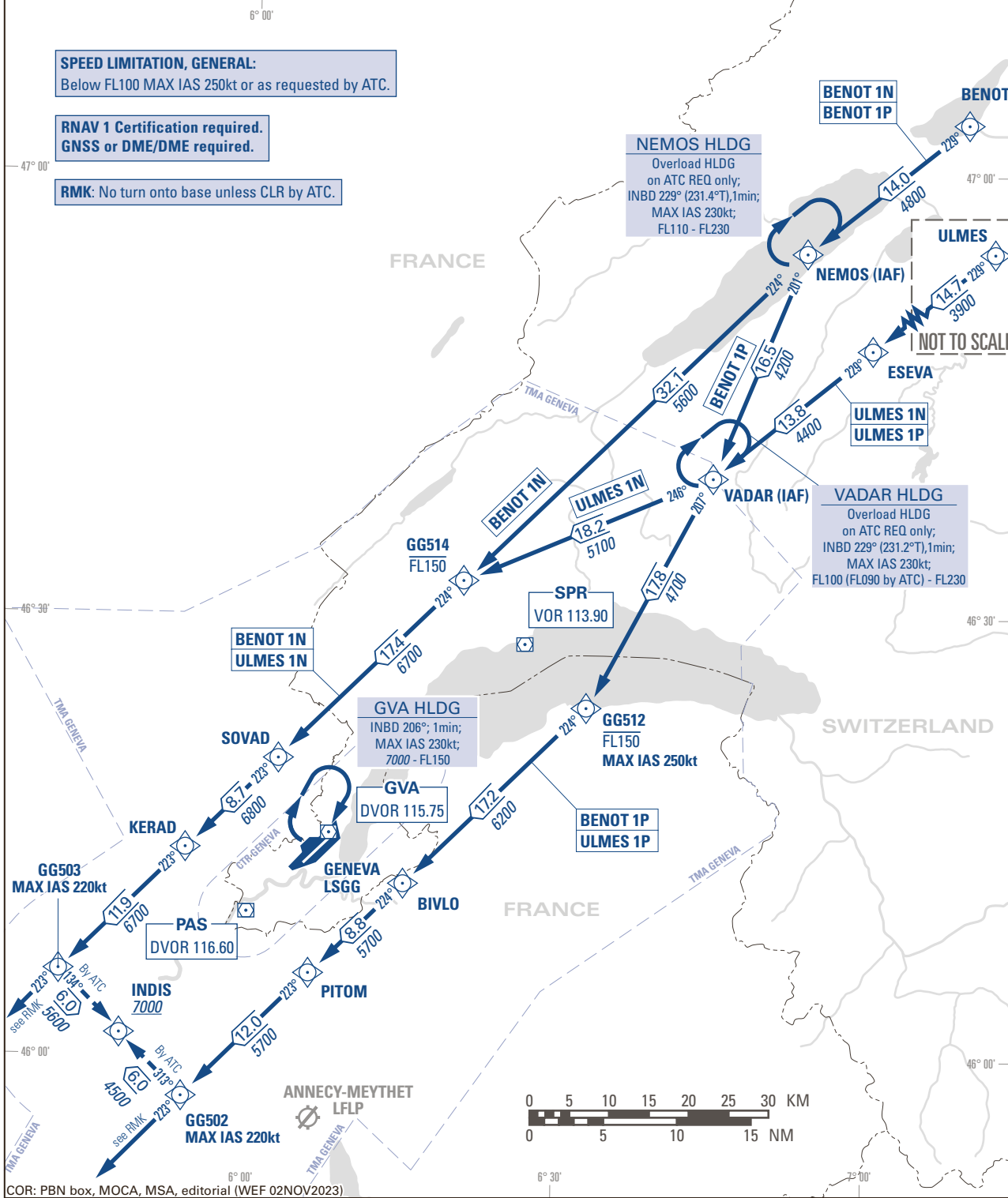
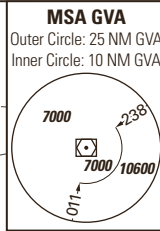
Below FL100 MAX IAS 250kt or as requested by ATC.

RNAV 1 Certification required.
GNSS or DME/DME required.

RMK: No turn onto base unless CLR by ATC.



BEARINGS, TRACKS AND RADIALS ARE MAGNETIC
DISTANCES IN NM
ALTITUDES IN FT



COR: PBN box, MOCA, MSA, editorial (WEF 02NOV2023)

THIS PAGE INTENTIONALLY LEFT BLANK